

Editor: Michael J G Farthing

Associate Editors: David Adams, John Atherton, Ian Forgacs (reviews, editorials) Thomas T MacDonald, Jan Tack, Nicholas A Wright

Evidence-Based Gastroenterology Advisory Group: Richard F A Logan, Stephen J W Evans, Andrew Hart, Jane Metcalf

Technical Editors: Linda Gough, Josie Stephenson

Editorial Office Manager: Claire Castle

Editorial Assistants: Alex Hodge, Hannah Schlesinger

EDITORIAL COMMITTEE	P Malfertheiner (Germany)
M J P Arthur (UK)	D Martin (UK) (USA)
K E Barrett (USA)	E Mayer (USA)
E Beubler (Austria)	K Moore (UK)
M K Bhan (India)	M F Neurath (USA)
M Blaser (USA)	M Novelli (UK)
H Buller (The Netherlands)	F Pallone (Italy)
R W Chapman (UK)	R H Riddell (Canada)
T Chiba (Japan)	S Schalm (The Netherlands)
S Collins (Canada)	S Schreiber (Germany)
E Corazzari (Italy)	M Swain (Canada)
A M Di Bisceglie (USA)	D Schuppan (Germany)
L Greco (Italy)	J J Y Sung (Hong Kong)
R H Holloway (Australia)	I Tomlinson (UK)
P J Kahrilas (USA)	G Triadafilopoulos (USA)
M A Kamm (UK)	Z Tulassay (Hungary)
N F LaRusso (USA)	S J H van Deventer (The Netherlands)
L Lundell (Sweden)	
O Lundgren (Sweden)	
S J W Evans (UK)	Editor
Statistical adviser	British Medical Journal

## Local editions

China: Excerpta Medica Asia Ltd, 19/F Eight Commercial Tower, 8 Sun Yip Street, Chai Wang, Hong Kong. Tel: +852 2965 1300; Fax: +852 2976 0778  
Netherlands/Belgium: Medicom Excel, Box 151, 1400 AD Bussum, Netherlands. Tel: +31 35 69 52480; Fax: +31 35 69 48565

NOTES TO ADVERTISERS Applications for advertisement space and for rates should be addressed to the Advertisement Manager, Gut, BMJ Publishing Group, BMA House, Tavistock Square, London WC1H 9JR.

NOTICE TO SUBSCRIBERS Gut is published monthly. The annual subscription rates for institutions are £300 (USA \$462) for print only. Online licences are priced on the FTE basis and allow access by the whole institution. Institutions that opt for online access may purchase print at deeply discounted rates. Personal subscription rates which include online access are £125 (\$199). Enquiries regarding rates and orders should be sent to the Subscription Manager, Gut, BMJ Publishing Group, BMA House, Tavistock Square, London WC1H 9JR. Subscribers may pay for their subscriptions by Mastercard, Visa, or American Express, by quoting on their order the credit or chargecard preferred, together with the appropriate personal account number and expiry date of the card. Orders can also be placed with any leading subscription agent or bookseller. (For the convenience of readers in the USA subscription orders, with or without payment, may also be sent to the BMJ Publishing Group, PO Box 590A, Kennebunkport, ME 04046, USA. Tel: 001 800 236 6265. All enquiries, however, must be addressed to the publisher in London.) All enquiries regarding air mail rates and single copies already published should be addressed to the publisher in London.

## Permissions

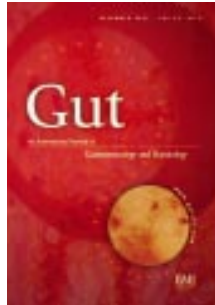
COPYRIGHT © 2001 by Gut. All rights reserved. No part of this publication may be reproduced, stored in a retrieval system, or transmitted in any form or by any means, electronic, mechanical, photocopying, recording, or otherwise without the prior permission of Gut.

For information regarding permissions please contact: Mrs Carol Torselli, Permissions Executive, BMJ Publishing Group, BMA House, London, Tavistock Square WC1H 9JR, UK; tel: +44 (0)20 7383 6169; fax: +44 (0)20 7383 6668; e-mail: ctorselli@bmjgroup.com.

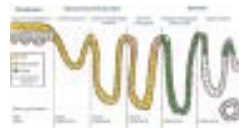
Periodicals postage paid, Rahway NJ. Post-master: send address changes to: Gut, c/o Mercury Airfreight International Ltd., 365 Blair Road, Avenel, NJ 07001, USA.

ISSN 0017-5749; ISSN 1468-3288 (electronic Gut)

Published by the BMJ Publishing Group  
Printed in UK on acid free paper by Cambrian Printers, Aberystwyth.



Endoscopic findings of portal hypertensive gastropathy with mosaic pattern and cherry red spots. (From the review by Burak *et al*, pp 866–872.)



See p 746

### Leading article

- 743 The putative role of inflammation in the irritable bowel syndrome *S M Collins, T Piche, P Rampal*

### Commentary

- 746 The continuing tale of cytokeratins in Barrett's mucosa: *As you like it* *A Latchford, B Eksteen, J Jankowski*
- 747 Monocytes or T cells in Crohn's disease: does IL-16 allow both to play at that game? *S Schreiber*
- 748 Sodium in preascitic cirrhosis: please pass the salt *J Clària, J Rodés*

### Clinical @lert

- 750 Heavy drinking greatly increases the risk of cirrhosis in patients with HCV hepatitis *C P Day*

### Science @lert

- 752 *NOD2 (CARD15)*, the first susceptibility gene for Crohn's disease *D P B McGovern, D A van Heel, T Ahmad, D P Jewell*

### Debate

- 755 Protagonist: *Mycobacterium avium* subspecies *paratuberculosis* is a cause of Crohn's disease *J Hermon-Taylor*
- 757 Antagonist: *Mycobacterium avium* subspecies *paratuberculosis* is a cause of Crohn's disease *P Quirke*

### Gastro-oesophageal reflux

- 761 Cytokeratin immunoreactivity of intestinal metaplasia at normal oesophagogastric junction indicates its aetiology *A Couvelard, J-M Cauvin, D Goldfain, A Rotenberg, M Robaszekiewicz, J-F Fléjou, members of the Groupe d'Etude de l'Oesophage de Barrett*
- 767 Temporal associations between coughing or wheezing and acid reflux in asthmatics *B Avidan, A Sonnenberg, T G Schnell, S J Sontag*

### Inflammation and inflammatory bowel disease

- 773 Diagnostic misclassification reduces the ability to detect linkage in inflammatory bowel disease genetic studies *M S Silverberg, M J Daly, D N Moskovitz, J D Rioux, R S McLeod, Z Cohen, G R Greenberg, T J Hudson, K A Siminovitch, A H Steinhart*

- 777 Behaviour of Crohn's disease according to the Vienna classification: changing pattern over the course of the disease  
*E Louis, A Collard, A F Oger, E Degroote, F Aboul Nasr El Yafi, J Belaiche*
- 783 Low dose balsalazide (1.5 g twice daily) and mesalazine (0.5 g three times daily) maintained remission of ulcerative colitis but high dose balsalazide (3.0 g twice daily) was superior in preventing relapses  
*W Kruis, S Schreiber, D Theuer, J-W Brandes, E Schütz, S Howaldt, B Krakamp, J Hämling, H Mönnikes, I Koop, M Stolte, D Pallant, U Ewald*
- 790 A randomised controlled trial of high versus low long chain triglyceride whole protein feed in active Crohn's disease  
*K Leiper, J Woolner, M M C Mullan, T Parker, M van der Vliet, S Fear, J M Rhodes, J O Hunter*
- 795 Interleukin 16 expression and phenotype of interleukin 16 producing cells in Crohn's disease  
*P Middel, K Reich, F Polzien, V Blaschke, B Hemmerlein, J Herms, M Korabiowska, H-J Radzun*

**Immunology**

- 804 Frequency of clonal intraepithelial T lymphocyte proliferations in enteropathy-type intestinal T cell lymphoma, coeliac disease, and refractory sprue  
*S Daum, D Weiss, M Hummel, R Ullrich, W Heise, H Stein, E-O Riecken, H-D Foss, the Intestinal Lymphoma Study Group*

**Motility and visceral sensation**

- 813 Prolonged manometric recordings of oesophagus and lower oesophageal sphincter in achalasia patients  
*M A van Herwaarden, M Samsom, A J P M Smout*
- 822 Intestinal inflammation and activation of sensory nerve pathways: a functional and morphological study in the nematode infected rat  
*R De Giorgio, G Barbara, P Blennerhassett, L Wang, V Stanghellini, R Corinaldesi, S M Collins, G Tougas*
- 828 Effects of cisapride on gall bladder emptying, intestinal transit, and serum deoxycholate: a prospective, randomised, double blind, placebo controlled trial  
*M J Veysey, P Malcolm, A I Mallet, P J Jenkins, G M Besser, G M Murphy, R H Dowling*

**Cancer**

- 835 Bile acid metabolism by fresh human colonic contents: a comparison of caecal versus faecal samples  
*L A Thomas, M J Veysey, G French, P B Hylemon, G M Murphy, R H Dowling*

**Pancreatitis**

- 843 Effect of somatostatin on the sphincter of Oddi in patients with acute non-biliary pancreatitis  
*K-H Lai, G-H Lo, J-S Cheng, M-T Fu, E-M Wang, H-H Chan, Y-Y Wang, P-I Hsu, C-K Lin*

**Liver disease**

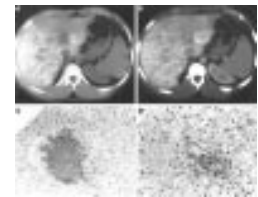
- 847 Sodium homeostasis with chronic sodium loading in preascitic cirrhosis  
*F Wong, P Liu, L Blendis*
- 852 Antiphospholipid antibodies associated with alcoholic liver disease specifically recognise oxidised phospholipids  
*R Rolla, D Vay, E Mottaran, M Parodi, M Vidali, M Sartori, C Rigamonti, G Bellomo, E Albano*

**Case report**

- 860 Acute liver graft failure due to emergence of lamivudine resistant hepatitis B virus: rapid resolution during treatment with adefovir  
*D Mutimer, B H Feraz-Neto, R Harrison, K O'Donnell, J Shaw, P Cane, D Pillay*

**Gut file**

- 864 Dengue virus induced hepatitis with chronic calcific changes  
*A Fabre, A Couvelard, C Degott, C Lagorce-pagès, F Bruneel, E Bouvet, F Vachon*



See p 864

**Review**

- 866 Portal hypertensive gastropathy and gastric antral vascular ectasia (GAVE) syndrome  
*K W Burak, S S Lee, P L Beck*

**Letters to the editor**

- 738 Aminosalicylate as prophylaxis for Crohn's disease  
*A Qasim, J Seery, C A O'Moran*
- 738 Probiotics in IBD  
*R J Kennedy, S J Kirk, K R Gardiner*
- 738 Probiotics in Crohn's disease  
*M Guslandi*
- 874 Survey of informed consent for endoscopy  
*A I Thuraisingham*
- 874 Why measure thiopurine methyltransferase activity? Direct administration of 6-thioguanine might be the alternative for 6-mercaptopurine or azathioprine  
*D de Jong, C J J Mulder, A A van Sorge*
- 873 Book reviews Notes