

Changes in gut microbiota control inflammation in obese mice through a mechanism involving GLP-2-driven improvement of gut permeability

P D Cani,¹ S Possemiers,² T Van de Wiele,² Y Guiot,³ A Everard,¹ O Rottier,¹ L Geurts,¹ D Naslain,^{1,4} A Neyrinck,¹ D M Lambert,⁴ G G Muccioli,⁵ N M Delzenne¹

See Commentary, p 1044

► A supplementary table and three files of supplementary data are published online only at <http://gut.bmj.com/content/vol58/issue8>

¹ Unit of Pharmacokinetics, Metabolism, Nutrition and Toxicology, Louvain Drug Research Institute, Université catholique de Louvain, Brussels, Belgium; ² Laboratory of Microbial Ecology and Technology, Faculty of Bioscience Engineering, Ghent University, Ghent, Belgium; ³ Department of Pathology, Université catholique de Louvain, Brussels, Belgium; ⁴ Medicinal Chemistry and Radiopharmacy Unit, Louvain Drug Research Institute, Université catholique de Louvain, Brussels, Belgium; ⁵ Laboratory of Chemical and Physico-chemical Analysis of Drugs (CHAM), Louvain Drug Research Institute, Université catholique de Louvain, Brussels, Belgium

Correspondence to: Dr P D Cani, UCL, Unit PMNT-7369, Av E Mounier, 73/69, B-1200 Brussels, Belgium; patrice.cani@uclouvain.be; or Professor NM Delzenne, UCL, Unit PMNT-7369, Av R Mounier, 73/69, B-1200 Brussels, Belgium; nathalie.delzenne@uclouvain.be

Revised 4 February 2009
Accepted 6 February 2009
Published Online First
24 February 2009



This paper is freely available online under the BMJ Journals unlocked scheme, see <http://gut.bmj.com/info/unlocked.dtl>

ABSTRACT

Background and aims: Obese and diabetic mice display enhanced intestinal permeability and metabolic endotoxaemia that participate in the occurrence of metabolic disorders. Our recent data support the idea that a selective increase of *Bifidobacterium* spp. reduces the impact of high-fat diet-induced metabolic endotoxaemia and inflammatory disorders. Here, we hypothesised that prebiotic modulation of gut microbiota lowers intestinal permeability, by a mechanism involving glucagon-like peptide-2 (GLP-2) thereby improving inflammation and metabolic disorders during obesity and diabetes.

Methods: Study 1: *ob/ob* mice (Ob-CT) were treated with either prebiotic (Ob-Pre) or non-prebiotic carbohydrates as control (Ob-Cell). Study 2: Ob-CT and Ob-Pre mice were treated with GLP-2 antagonist or saline. Study 3: Ob-CT mice were treated with a GLP-2 agonist or saline. We assessed changes in the gut microbiota, intestinal permeability, gut peptides, intestinal epithelial tight-junction proteins ZO-1 and occludin (qPCR and immunohistochemistry), hepatic and systemic inflammation.

Results: Prebiotic-treated mice exhibited a lower plasma lipopolysaccharide (LPS) and cytokines, and a decreased hepatic expression of inflammatory and oxidative stress markers. This decreased inflammatory tone was associated with a lower intestinal permeability and improved tight-junction integrity compared to controls. Prebiotic increased the endogenous intestinotrophic proglucagon-derived peptide (GLP-2) production whereas the GLP-2 antagonist abolished most of the prebiotic effects. Finally, pharmacological GLP-2 treatment decreased gut permeability, systemic and hepatic inflammatory phenotype associated with obesity to a similar extent as that observed following prebiotic-induced changes in gut microbiota.

Conclusion: We found that a selective gut microbiota change controls and increases endogenous GLP-2 production, and consequently improves gut barrier functions by a GLP-2-dependent mechanism, contributing to the improvement of gut barrier functions during obesity and diabetes.

Obesity is typically associated with a cluster of several metabolic disorders, characterised by a low-grade inflammation.^{1,2} Evidence that the gut microbiota composition can be different between healthy and obese and/or type 2 diabetic patients has led to the investigation of this environmental element as a key factor in the pathophysiology of metabolic diseases.³⁻⁵

We previously reported that the gut microbiota is involved in high-fat diet-induced metabolic

endotoxaemia, adipose tissue inflammation and metabolic disorders.⁶⁻⁹ The link between high-fat diet-induced inflammation, oxidative stress, metabolic disorders, and gut microbiota, could be lipopolysaccharide (LPS)-dependent.^{7,10-14} Several pieces of clinical and experimental data have confirmed that LPS significantly contributes to the development of obesity-related inflammatory liver diseases such as non-alcoholic fatty liver disease and non-alcoholic steatohepatitis.¹⁵⁻¹⁷ High plasma LPS levels could result from an increased production of endotoxin upon changes in the gut microbiota.^{7,8} Normally, the intestinal epithelium acts as a continuous barrier to avoid LPS translocation; yet some endogenous or exogenous events may alter this protective function. Among the elements promoting a leaky gut, and thus an increased plasmatic LPS level, are alcohol consumption,^{15,18-22} immobilisation stress,^{23,24} and radiation²⁵ have been proposed. In addition, we have recently shown that the modulation of gut bacteria following a high-fat diet strongly increases intestinal permeability, by reducing the expression of genes coding for two tight junction proteins ZO-1 and occludin.⁶ We previously reported that gut bacteria are clearly involved in these events since obese and high-fat fed-diabetic mice treated with an antibiotic recovered normal intestinal epithelial integrity.⁶ Also, recent data have shown that obese and diabetic mice display enhanced intestinal permeability, and are characterised by a metabolic endotoxaemia and a low-grade inflammation.^{6,7,26} Furthermore, high-fat feeding changes gut microbiota^{6-8,27} towards a decreased number of bifidobacteria,⁶⁻⁸ a group of bacteria which has been shown to reduce intestinal LPS levels in mice and to improve the mucosal barrier function.²⁸⁻³² Besides, we have shown that feeding mice with prebiotics increased the number of intestinal bifidobacteria and reduced the impact of high-fat diet-induced metabolic endotoxaemia and inflammatory disorders.^{8,33}

Importantly, however, the mechanisms linking prebiotic-induced changes in gut microbiota, metabolic endotoxaemia and the improvement of obesity-related hepatic and metabolic disorders are still unknown.

By using these experiments, we have tested the hypothesis that the control of gut permeability through the selective modulation of gut microbiota by prebiotics participates in the improvement of metabolic diseases in *ob/ob* mice. Novel mechanisms involving the influence of gut fermentation

on specific proglucagon-derived peptides – namely, glucagon-like peptide-2 (GLP-2) – are proposed.

MATERIALS AND METHODS

Animals

Experiment 1

Six-week-old *ob/ob* ($n = 10/\text{group}$) mice (C57BL/6 background; Jackson Laboratory, Bar Harbor, Maine, USA) were housed in a controlled environment (12 h daylight cycle, lights off at 18.00 hours) in groups of 2 mice/cage, and kept with free access to food and water. The mice were fed a control diet (Ob-CT) (A04, Villemoisson sur Orge, France), or a control diet containing a mix of a fermentable dietary fibre (oligofructose) (Ob-Pre) (Orafti, Tienen, Belgium),³³ or a diet containing a mix a non-fermentable dietary fibre (microcrystalline cellulose) (Ob-Cell) (Vivapur Microcrystalline cellulose; J. Retten Maier 38 Söhne, Weissenborn, Germany). Dietary fibres were added in a proportion of 9:1 (weight of control diet:weight of fibres).

Experiment 2

Six-week-old *ob/ob* ($n = 8/\text{group}$) mice (C57BL/6 background; Jackson Laboratory) were housed in a controlled environment (12 h daylight cycle, lights off at 18.00 hours) in groups of 2 mice/cage, and kept with free access to food and water. To study the significance of GLP-2 in this model, mice were injected subcutaneously twice daily for 4 weeks with 2.5 µg/kg of GLP-2 receptor antagonist GLP-2 (3–33) (Eurogentec, Verviers, Belgium) as described^{34–36} or saline. The mice were fed a control diet and injected with saline or GLP-2 antagonist (Ob-CT and Ob-Ant, respectively), or fed the prebiotic diet and injected with saline or GLP-2 antagonist (Ob-Pre and Ob-Pre-Ant, respectively).

Experiment 3

Six-week-old *ob/ob* ($n = 6/\text{group}$) mice (C57BL/6 background; Jackson Laboratory) were housed in a controlled environment (12 h daylight cycle, lights off at 1800 hours) in groups of 2 mice/cage, and kept with free access to food and water. The mice were fed the same control diet as described in experiment 1. The mice were separated into two groups and injected subcutaneously twice daily for 12 days with 25 µg GLP-2 (1–33) (Bachem, Bubendorf, Switzerland) (Ob-GLP-2), or saline (Ob-CT). GLP-2 doses were based on previous studies describing the physiological effects (ie, the intestinotrophic properties) of the peptides.^{35–39}

Tissue sampling

Mice were anaesthetised (ketamine/xylazine, intraperitoneally, 100 and 10 mg/kg, respectively) after a 5 h period of fasting, and blood samples and tissues were harvested for further analysis. Mice were killed by cervical dislocation. Liver, caecum (full and empty), muscles (*vastus lateralis*), and adipose tissues (epididymal, subcutaneous and visceral) were precisely dissected and weighed. The intestinal segments (jejunum, colon) were immersed in liquid nitrogen, and stored at -80°C , for further analysis.

Microbial analysis of the caecal content of selected mice

Metagenomic DNA was extracted from the caecal content of randomly selected mice (5/group), using the QIAamp DNA stool mini kit (Qiagen, Venlo, Netherlands) according to the manufacturer's instructions. Denaturing gradient gel electrophoresis (DGGE) on total bacteria, bifidobacteria and lactobacilli were

performed to study the qualitative effect of the treatment on the structure and composition of the intestinal microbial community.⁴⁰ DGGE with a 45–60% denaturant gradient were used to separate the polymerase chain reaction (PCR) products obtained with a nested approach for the 16S rRNA genes of bifidobacteria (primers BIF164f-BIF662r) and lactobacilli (SGLAB0158f-SGLAB0667). The first PCR round was followed by a second amplification with primers 338F-GC and 518R. The latter primers were also used to amplify the 16S rDNA of all bacteria on total extracted DNA. The DGGE patterns obtained were subsequently analysed using the Bionumerics software version 2.0 (Applied Maths, Sint-Martens-Latem, Belgium).⁴¹ In brief, the calculation of the similarities was based on the Pearson (product-moment) correlation coefficient. Clustering analysis was performed using the unweighted pair group method with arithmetic mean clustering algorithm (UPGMA) to calculate the dendrograms of each DGGE gel and a combination of all gels. The latter was performed on a created composite dataset. Multidimensional scaling (MDS) analysis was used to reduce the different data of the complex DGGE patterns of one sample to one point in a three-dimensional space. MDS was based on the combined information from the distance matrices of each DGGE, obtained using similarity coefficients (Pearson correlation).

Quantitative PCR (qPCR) for total bacteria (using primers PRBA338f and P518r) and specific for bifidobacteria, lactobacilli or the *Eubacterium rectale/Clostridium coccoides* grp. was performed to study the quantitative effect of the treatment on the composition of the intestinal microbial community as reported by Possemiers *et al.*⁴²

Real-time qPCR

Total RNA from tissues was prepared using the TriPure reagent (Roche, Basel, Switzerland) as described.³³ cDNA was synthesised using a reverse transcription kit (Promega, Madison, Wisconsin, USA) from 1 µg of total RNA. qPCR was performed with a STEP one PLUS instrument and software (Applied Biosystems, Foster City, California, USA), as described.⁶ Primer sequences for the targeted mouse genes are presented in supplemental table 1.

Immunofluorescence analysis of occludin and ZO-1

Jejunum segments were immediately removed, washed with PBS, mounted in embedding medium (Tissue-Tek, Sakura, Netherlands), and stored at -80°C until use. Cryosections (5 µm) were fixed in acetone at -20°C for 5 min for occludin and fixed in ethanol for 30 min at room temperature and in acetone at -20°C for 5 min for ZO-1. Non-specific background was blocked by incubation with 10% bovine serum albumin (BSA) in Tris-buffered saline (TBS) and 0.3% Triton X-100 (30 min at room temperature). Sections were incubated with rabbit anti-occludin or rabbit anti-ZO-1 (1:400 for ZO-1 and 1:100 for occludin staining; Zymed Laboratories, San Francisco, California, USA) for 2 h. Sections were washed three times for 10 min in TBS and probed with goat anti-rabbit fluorescein isothiocyanate (FITC)-conjugated antibodies (1:50, Zymax; Zymed Laboratories). Slides were washed three times for 10 min in TBS and mounted in mounting medium (Vectashield; Vector Laboratories, Burlingame, California, USA). Sections were visualised on a fluorescence microscope using a $\times 40$ objective, and images were stored digitally with Leica software. As a control, slides were incubated with serial dilutions of the primary antibody to signal extinction. Two negative controls were used: slides incubated with irrelevant

Table 1 Prebiotic-associated changes in gut microbiota

| Bacterial content | Ob-CT | Ob-Cell | Ob-Pre |
|---|--------------------------|--------------------------|--------------------------|
| Total bacteria | 5.74 ^a (2.05) | 4.30 ^b (0.38) | 8.07 ^c (1.05) |
| <i>Bifidobacterium</i> spp | 4.65 ^a (1.58) | 3.38 ^b (0.37) | 6.35 ^c (1.10) |
| <i>Lactobacillus</i> spp | 4.93 ^a (1.76) | 3.79 ^b (0.38) | 7.16 ^b (1.40) |
| <i>Clostridium coccoides</i> – <i>Eubacterium rectale</i> cluster | 3.65 ^a (1.37) | 2.72 ^a (0.20) | 6.41 ^b (1.27) |

Results are given as the log DNA copies/caecal content (SD).

Data are mean with the SD.

Data with different superscript letters are significantly different $p < 0.05$, according to the post hoc ANOVA statistical analysis.

CT, Cell and Pre, respectively, refer to the selected *ob/ob* mice fed a normal-diet, non-prebiotic control diet or prebiotic diet.

antibody or without primary antibody. All the stainings were performed in duplicate in non-serial distant sections, and analysed in a double-blind manner by two different investigators.

Intestinal permeability in vivo

This measure is based on the intestinal permeability towards 4000 Da fluorescent dextran–FITC (DX-4000–FITC) (FD4000; Sigma-Aldrich, St. Louis, Missouri, USA) as described.^{6–43} Briefly, mice that had fasted for 6 h were given DX-4000–FITC by gavage (500 mg/kg body weight, 125 mg/ml). After 1 h and 4 h, 120 µl of blood was collected from the tip of the tail vein. The blood was centrifuged at 4°C, 12 000 g for 3 min. Plasma was diluted in an equal volume of PBS (pH 7.4) and analysed for DX-4000–FITC concentration with a fluorescence spectrophotometer (HTS-7000 Plus-plate-reader; Perkin Elmer, Wellesley, Massachusetts, USA) at an excitation wavelength of 485 nm and emission wavelength of 535 nm. Standard curves were obtained by diluting FITC–dextran in non-treated plasma diluted with PBS (1:3 v/v).

Biochemical analyses

Plasma LPS concentration was determined by using a kit based upon a *Limulus* amoebocyte extract (LAL kit endpoint-QCL1000; Cambrex BioScience, Walkersville, Maryland, USA), samples were diluted 1/40 to 1/100 and heated for 20 cycles of 10 min at 68°C and 10 min at 4°C. An internal control for LPS recovery was included in the calculation. Plasma cytokines (interleukin (IL) 1α, IL1b, tumour necrosis factor (TNF) α, IL6, monocyte chemoattractant protein (MCP)-1, macrophage inflammatory protein (MIP)-1α, IL10, interferon (INF) γ, IL15, IL18) and gut hormones (GLP-1 (active), GIP (total), amylin (active), pancreatic polypeptide) were respectively determined in duplicate by using a Bio-Plex Multiplex kit (Bio-Rad, Nazareth, Belgium), or a mouse gut hormones panel (LincoPlex; Millipore, Brussels, Belgium), and measured by using Luminex technology (Bio-Rad Bioplex; Bio-Rad) following the manufacturer's instructions, an EIA kit (GLP-2 EIA kit) (Yanaihar Institute, Shizuoka, Japan) was used to quantify GLP-2.

Statistical analysis

Results are presented as mean with the SEM. The statistical significance of differences was analysed by one-way ANOVA followed by post hoc Bonferroni's multiple comparison test or Kruskal–Wallis for non-parametric data followed by Dunn's multiple comparison test. Data with different superscript letters are significantly different $p < 0.05$, according to the post hoc ANOVA statistical analysis. Comparisons between GLP-2-treated mice and control mice were performed using the two-tailed Student t test. Multiple correlation analyses were assessed by the Pearson's test using GraphPad Prism version 5.00

for windows. Results were considered statistically significant when $p < 0.05$.

RESULTS

Prebiotic treatment induces changes in the gut microbiota of *ob/ob* mice

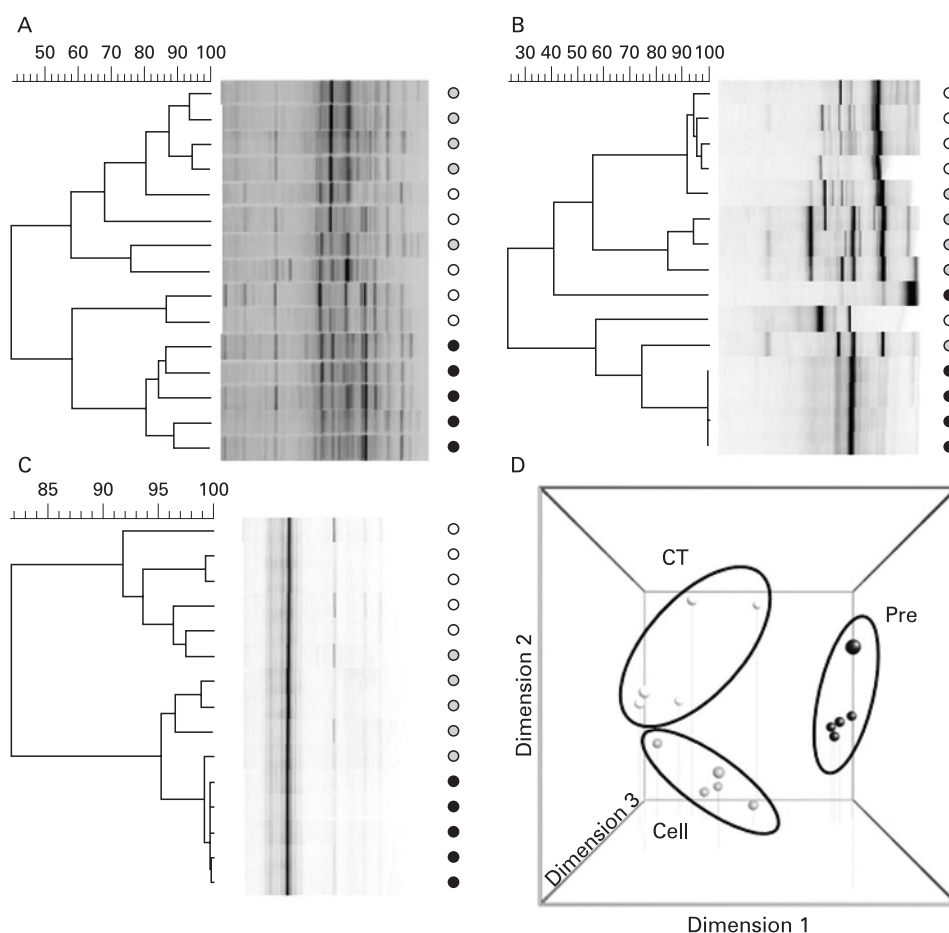
Feeding *ob/ob* mice with the prebiotic carbohydrates (Ob-Pre) induced significant changes in the gut microbiota of the caecum, with a higher total bacteria count, *Lactobacillus* spp., *Bifidobacterium* spp., and the *C. coccoides*–*E. rectale* cluster (table 1), as compared to the control mice (Ob-CT and Ob-Cell).

Changes in the microbial community composition were also observed upon DGGE analysis of the caecal content of the different treatment groups (fig 1A–C). Clustering of the DGGE fingerprints for total bacteria and for the specific groups of bifidobacteria and lactobacilli, indicated, for all fingerprints, a separate cluster of the Ob-Pre mice. Secondary clustering was observed between the Ob-CT and Ob-Cell mice. Finally, multi-dimensional scaling (MDS) analysis, performed on the composite data set derived from the combination of all the DGGE analyses of this study (total bacteria, lactobacilli and bifidobacteria), also indicated a specific clustering pattern, depending on the treatment of the *ob/ob* mice. (fig 1D). As the distance between 2 data points in the three-dimensional MDS plot is a visual representation of the difference in the microbial community composition of the caecum of the different mice, MDS analysis provides the final confirmation that the prebiotic treatment induced important changes in the gut microbiota of the Ob-Pre mice compared to the control groups.

Changes in the gut microbiota upon prebiotic administration reduce intestinal permeability

Ob-Pre fed mice exhibited a 3-fold lower plasma DX-4000–FITC area under the curve (fig 2A) as compared to Ob-CT and Ob-Cell mice. In accordance with the in vivo assessment of intestinal permeability, LPS levels were significantly lower in Ob-Pre mice plasma samples, as compared to the other groups (fig 2B). Moreover, plasma DX-4000–FITC and portal plasma LPS levels were positively and significantly correlated (fig 2B, inset), further confirming the relation between intestinal permeability and the development of metabolic endotoxaemia. Gut permeability is controlled by several specific tight-junction proteins. Among these, ZO-1 and occludin have been proposed as key markers of tight-junction integrity.²⁶ The prebiotic treatment increased ZO-1 and occludin mRNA in the jejunum segment (fig 2C,F). As previously suggested, a representative immunofluorescence assay performed on intestinal sections of wild-type C57BL/6J mice demonstrated an intact network of ZO-1 and occludin proteins which were predominantly localised along the apical cellular border.²⁶ In strong contrast, ZO-1 and occludin staining appears to be decreased and discontinuous in Ob-CT tissues (fig 3A,B). Furthermore, immunohistochemical

Figure 1 Prebiotic-associated changes in the gut microbiota. DGGE fingerprint patterns of the caecal microbial community of selected *ob/ob* mice fed a normal-diet (Ob-CT, white symbols), non-prebiotic control diet (Ob-Cell, grey symbols) or prebiotic diet (Ob-Pre, black symbols) for 5 weeks. The DGGE profiles were constructed using primers for (A) Total bacteria (B) *Bifidobacterium* spp (C) *Lactobacillus* spp. Cluster analysis is based on the Pearson product-moment correlation coefficient and UPGMA linkage. (D) Three-dimensional multidimensional scaling analysis conducted on the DGGE fingerprinting composite data set (total bacteria, *Bifidobacterium* spp. and *Lactobacillus* spp). CT, Cell and Pre respectively refer to the selected *ob/ob* mice fed a normal-diet, non-prebiotic control diet or prebiotic diet for 5 weeks. DGGE, denaturing gradient gel electrophoresis; UPGMA, unweighted pair group method with arithmetic mean clustering algorithm.



score analysis confirmed the strong alteration of ZO-1 and occludin distribution and expression as compared to wild-type mice (fig 2E,H). In accordance with the mRNA analysis, prebiotic feeding improved the tight junctions, since the immunohistochemical staining of both proteins localised along the apical cellular border was higher in Ob-Pre as compared to Ob-CT and Ob-Cell mice (fig 3A,B).

To identify whether the changes in the gut microbiota and tight-junction protein expression are associated with in vivo gut permeability, multiple correlation analysis between these parameters was performed. Indeed, a negative correlation between tight-junction proteins mRNA and plasma DX-4000-FITC was found in the jejunum segment (fig 2D,G), and in the colon (supplementary data 1). In addition, the caecal content of *Bifidobacterium* spp. and portal plasma levels of LPS showed a negative correlation (supplementary data 1), suggesting that the specific increase of bifidobacteria positively impacted the development of metabolic endotoxaemia.

Changes in the gut microbiota upon prebiotic administration are associated with improved systemic and hepatic inflammation

To study the effects of changes in the gut microbiota and improved barrier function on the one hand, and metabolic disorders on the other hand, we first assessed systemic inflammation. All plasma cytokine and chemokine concentrations were decreased in Ob-Pre mice when compared to Ob-CT and Ob-Cell mice (fig 4). Metabolic endotoxaemia is frequently associated with hepatic inflammation, and with increased oxidative stress driving metabolic disorders. Here we found that changing the gut microbiota significantly reduced plasminogen

activator inhibitor 1 (PAI-1), CD68, NADPH oxidase (NADPHox) and inducible nitric oxide synthase (iNOS) mRNA concentrations (fig 5A,B,E,F), and tended to decrease toll-like receptor 4 (TLR4) and TNF α mRNA concentrations (fig 5I,J). The oxidative stress marker NADPHox positively correlated with macrophage infiltration markers (CD68, TLR4) (fig 5 C,D). Moreover, both macrophage infiltration markers were correlated (fig 5G). Plasma chemokine MCP-1 positively correlated with tissue macrophages infiltration and oxidative stress markers (fig 5 H,K,L). Accordingly, plasma LPS levels were positively correlated with NADPHox and macrophage infiltration markers (liver CD68 mRNA and plasma MCP-1 levels) (supplemental data 1). Furthermore, we found that these markers were negatively correlated with the content of *Bifidobacterium* spp. (supplemental data 1). The lower inflammatory and oxidative stress was associated with a lower total hepatic lipid content (Ob-CT: 839^a (SEM 111); Ob-Cell: 781^a (SEM 42); Ob-Pre: 531^b (SEM 58) mg of lipids/liver, Ob-Pre $p < 0.05$ vs Ob-CT and Ob-Cell) and confirmed by histological analysis (not shown). (Different superscript letters denote a statistical difference between the groups.) Altogether, these multiple correlations support a strong relationship between gut microbiota, gut permeability, systemic and hepatic inflammation, oxidative stress and macrophage infiltration in *ob/ob* mice.

Prebiotic feeding modulates plasma gut peptides and adiposity

Prebiotic administration decreased food intake (Ob-CT: 24.9^a (SEM 0.7); Ob-Cell: 20.0^b (SEM 0.5); Ob-Pre: 16.3^c (SEM 1.1) kcal/day.mouse; $p < 0.05$). We have previously demonstrated that prebiotic-induced changes in the gut microbiota modulate gastrointestinal peptides (GLP-1, peptide YY (PYY),

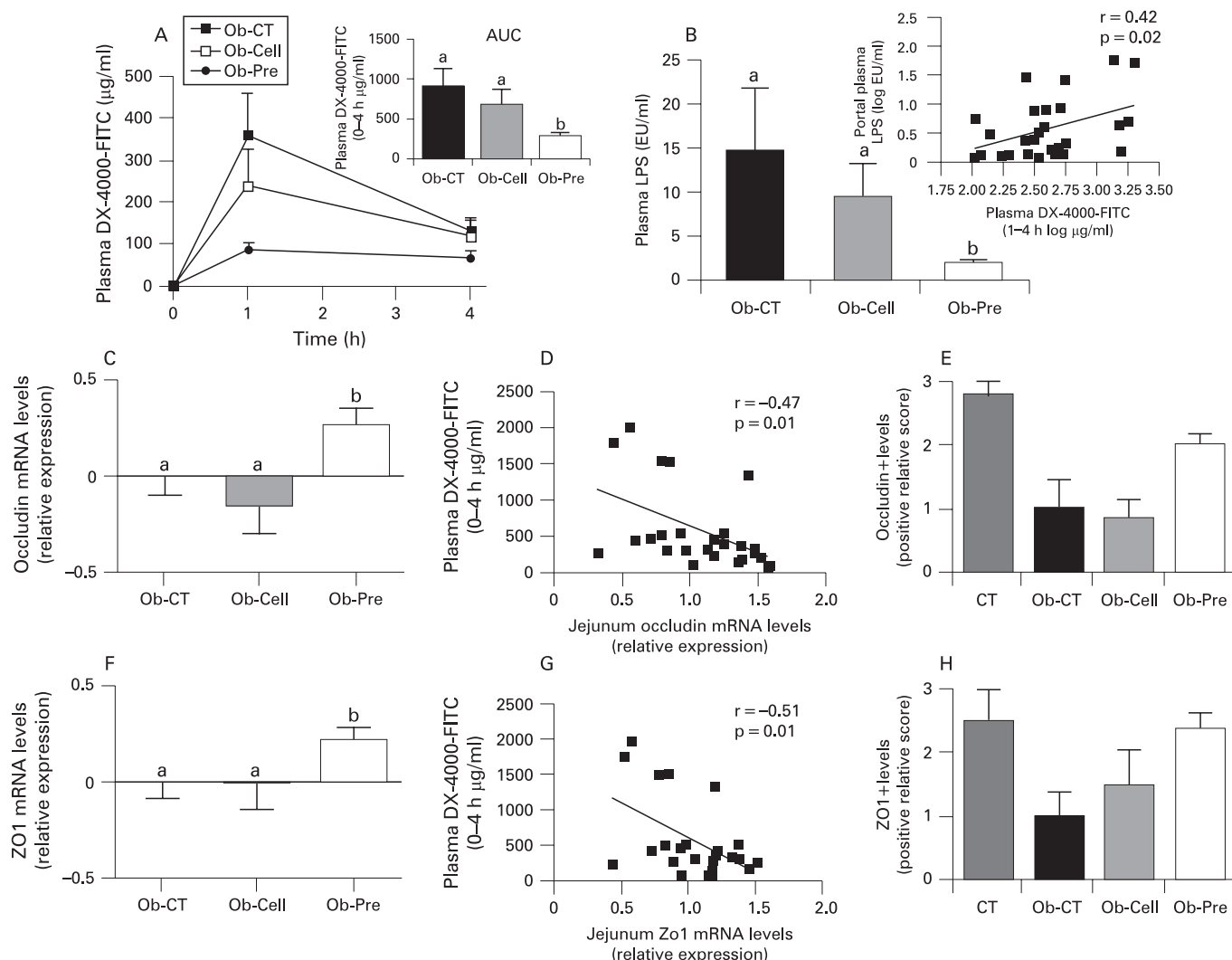


Figure 2 Prebiotic treatment reduces intestinal permeability. (A) Intestinal permeability assay: Plasma DX-4000-FITC (μg/ml) oral challenge measured in *ob/ob* mice fed a normal diet (Ob-CT), non-prebiotic control diet (Ob-Cell), prebiotic diet (Ob-Pre) for 5 weeks. The inset corresponds to the area under curve (AUC) in the same groups. (B) Plasma endotoxin (LPS) concentrations (EU/ml); the inset corresponds to correlation between plasma LPS levels and plasma DX-4000-FITC (Pearson's r correlation and corresponding p value). (C,F) Jejunum epithelial tight-junction protein markers (ZO-1 and occludin mRNA concentrations) relative expression to Ob-CT. Data are mean with the SEM. Data with different superscript letters are significantly different ($p < 0.05$), according to the post hoc ANOVA statistical analysis. (D,G) Correlations between intestinal permeability markers: plasma DX-4000-FITC and ZO-1 and occludin mRNA concentrations ($p < 0.05$); the inset corresponds to Pearson's r correlation and corresponding p value. (E,H) Immunohistochemistry score of the jejunum epithelial tight-junction proteins (ZO-1 and occludin) in wild-type (CT), Ob-CT, Ob-Cell or Ob-Pre mice. DX-4000, dextran of molecular weight 4000 Da; EU, endotoxin unit; FITC, fluorescein isothiocyanate; LPS, lipopolysaccharide.

ghrelin) involved in glucose homeostasis, appetite and/or body weight regulation.^{8 33 44-48} Here, we found that the prebiotic treatment also modulated portal plasma gut peptides in *ob/ob* mice, leading to a significant increase in GLP-1 (table 2). In addition, the glucose-dependent insulinotropic polypeptides (GIPs), another peptide associated with the development of obesity, diabetes and adiposity, was significantly decreased (table 2).⁴⁹⁻⁵¹ In accordance with this, Ob-Pre mice had lower visceral, epididymal and subcutaneous adipose depots and a higher muscle mass as compared to the other groups (supplemental data 2).

This study is the first in which it is shown that, besides an effect on gut peptides, feeding prebiotics also modulated two pancreatic peptides, since it significantly increased amylin (table 2) and decreased pancreatic polypeptide (PP) as compared to Ob-CT and Ob-Cell mice (table 2). The link between the above-mentioned peptides modulated by prebiotics and gut permeability has not

been described so far. Moreover, the decrease in food intake and/or a decrease in adiposity are not involved in changes in gut permeability. Thus, we have hypothesised that GLP-2, a peptide clearly related to GLP-1 production, could link changes in gut microbiota and intestinal barrier function.

Prebiotic administration increases intestinal proglucagon mRNA and portal plasma proglucagon-derived peptide GLP-2

We and other have previously shown that changing gut microbiota by using fermentable non-digestible carbohydrate significantly increases gut weight and promotes proliferation of epithelial cells.⁵²⁻⁵⁴ We have also shown – and confirmed in the present study (table 2) – that feeding mice with prebiotic doubled GLP-1 portal plasma levels.^{8 33 44 45 47 48 55 56} In previous studies, the increase in GLP-1 plasma level was associated with a higher GLP-1 peptide and proglucagon mRNA expression in the (proximal) colon tissue. Interestingly, our study is the first to show that a

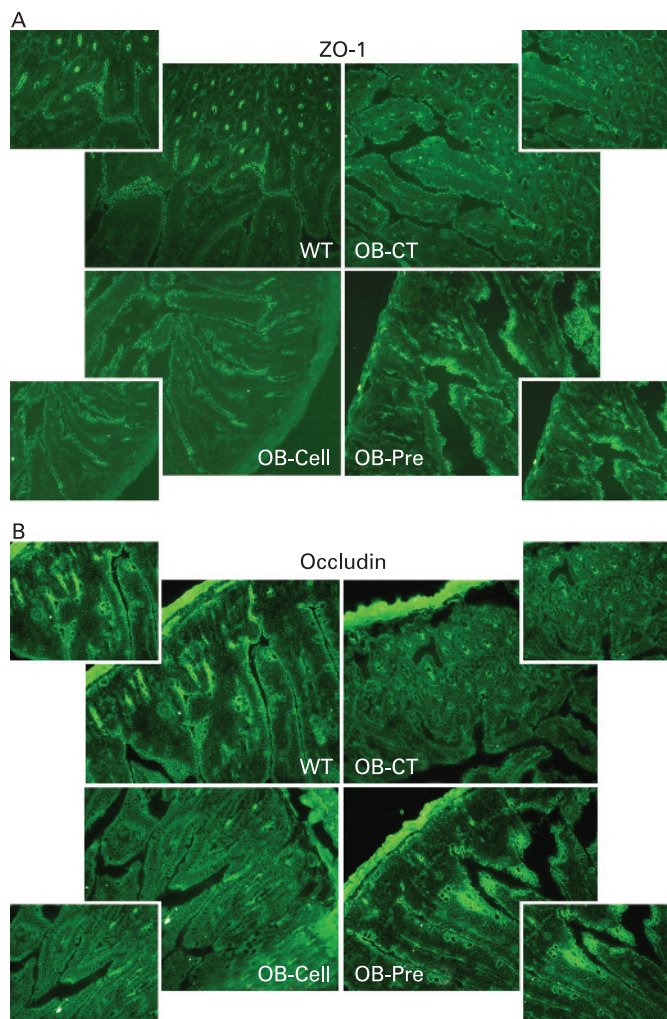


Figure 3 Prebiotic treatment changes tight-junction proteins distribution. Representative immunofluorescence staining for (A) ZO-1 and (B) occludin in *ob/ob* mice fed a normal diet (Ob-CT), non-prebiotic control diet (Ob-Cell), prebiotic diet (Ob-Pre) for 5 weeks. WT, wild-type.

higher proglucagon mRNA content occurs in the proximal colon – as expected – and also in the jejunum (fig 6A,B). Among the proglucagon-derived peptides, GLP-2 is co-secreted with GLP-1 and exerts an intestinotrophic effect.^{39–57–58} GLP-2 enhances intestinal epithelial proliferation and reduces gut permeability,^{59–62} hence, we found that Ob-Pre fed mice exhibited a significant increase of plasma GLP-2 levels (table 2). Importantly, portal plasma GLP-2 and both plasma markers of gut permeability (DX-4000-FITC and LPS) were negatively correlated (fig 6C,D). Along the same line, intestinal proglucagon and tight-junction mRNA (ZO-1, occludin) were positively correlated (fig 6E,F). Altogether, these data suggest that the prebiotic-induced intestinal proglucagon mRNA enhanced expression and the consequent GLP-2 production indicate that this peptide may positively impacts on gut barrier integrity.

Chronic GLP-2 antagonist treatment blunts prebiotic-induced reduction in endotoxaemia and hepatic inflammatory tone

To causally link changes in endogenous GLP-2 production upon prebiotic treatment with the improvement of metabolic endotoxaemia, and inflammatory markers, we chronically blocked GLP-2 receptor in prebiotic fed *ob/ob* mice by using GLP-2 antagonist.

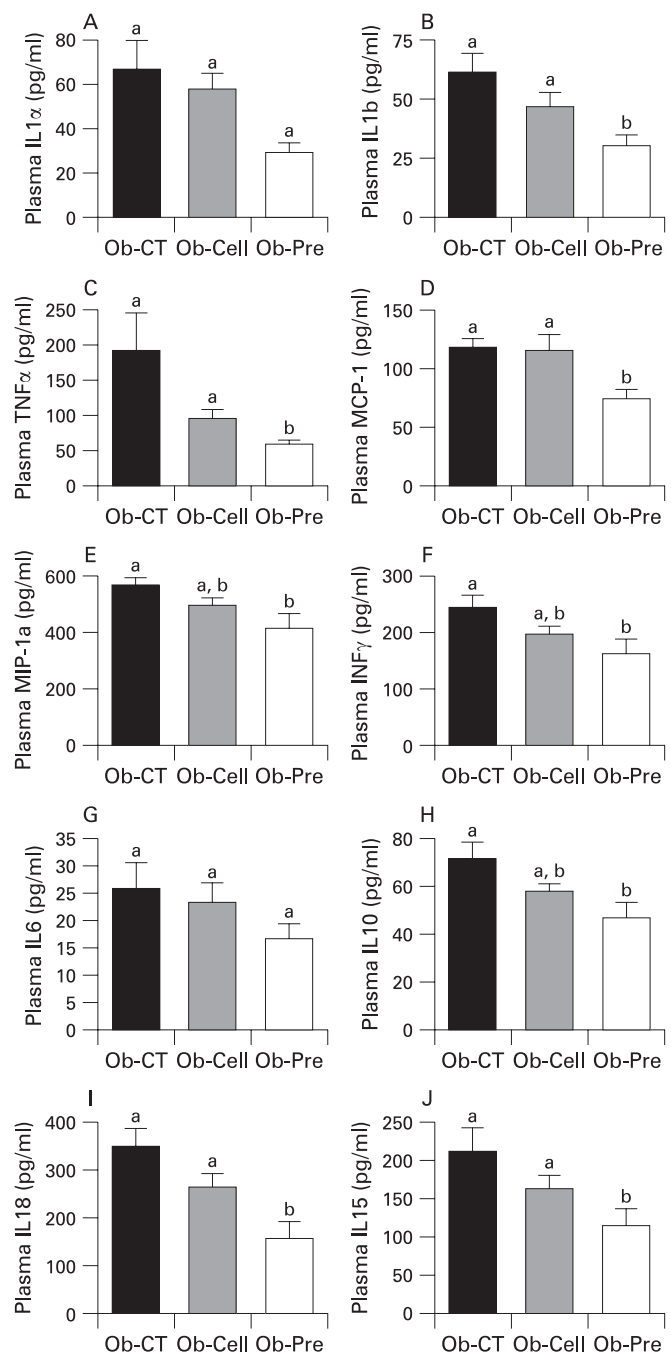


Figure 4 Prebiotic treatment reduces the occurrence of systemic inflammation. (A) IL1 α , (B) IL1b, (C) TNF α , (D) MCP-1, (E) MIP-1a, (F) INF γ , (G) IL6, (H) IL10, (I) IL18 and (J) IL15 plasma levels (pg/ml) in *ob/ob* mice fed a normal diet (Ob-CT), non-prebiotic control diet (Ob-Cell) or prebiotic diet (Ob-Pre) for 5 weeks. Data are mean with the SEM. Data with different superscript letters are significantly different (p < 0.05), according to the post hoc ANOVA statistical analysis. IFN, interferon; IL, interleukin; MCP-1, monocyte chemoattractant protein-1; MIP-1a, macrophage inflammatory protein-1a; TNF, tumour necrosis factor.

In this second set of experiments, we confirm the data observed in the first study showing that prebiotic-induced changes in gut microbiota are linked to a significant decrease in plasma LPS levels, hepatic inflammation and oxidative stress markers such as PAI-1, CD68, NADPHox and TLR4 mRNA concentrations (fig 7B–D,F), and to a tendency to decrease for iNOS and TNF α mRNA concentrations (fig 7E,G). In addition, we also confirm that the prebiotic treatment increases ZO-1 and

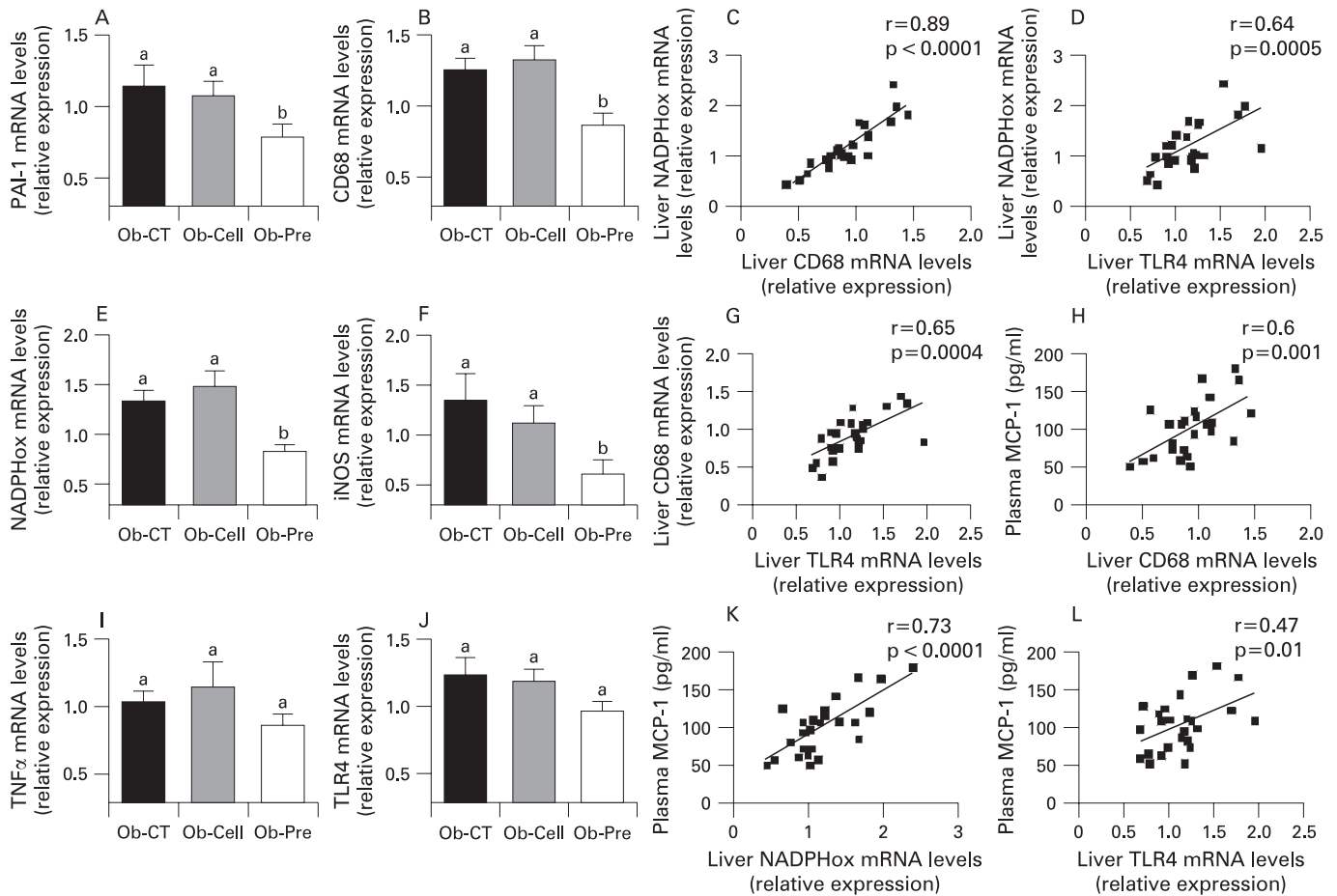


Figure 5 Changes in the gut microbiota control hepatic inflammation, oxidative stress and macrophage infiltration markers. (A,I) Inflammation: PAI-1, TNF α mRNA concentrations; (B,J) Macrophage infiltration markers: CD68, TLR4 mRNA concentrations; (E,F) Oxidative stress markers: NADPHox, iNOS mRNA concentrations in *ob/ob* mice fed a normal diet (Ob-CT), non-prebiotic control diet (Ob-Cell) or prebiotic diet (Ob-Pre) for 5 weeks. Data are mean with the SEM. Data with different superscript letters are significantly different ($p < 0.05$), according to the post hoc ANOVA statistical analysis. Correlations between liver NADPHox mRNA and (C) liver CD68 mRNA, (D) TLR4 mRNA or (K) plasma MCP-1 levels. Correlations between plasma MCP-1 and (H) liver CD68 mRNA or (L) TLR4 mRNA. (G) Correlation between liver CD68 mRNA and TLR4 mRNA concentrations ($p < 0.05$) the inset corresponds to Pearson's r correlation and corresponding p value. iNOS, inducible nitric oxide synthase; MCP-1, monocyte chemoattractant protein-1; NADPHox, NADPH oxidase; PAI-1, plasminogen activator inhibitor; TLR, toll-like receptor; TNF, tumour necrosis factor.

occludin mRNA (fig 7H) and the GLP-2 precursor transcript (proglucagon mRNA) content in the jejunum (fig 7I).

Importantly, the GLP-2 antagonist completely blunts the prebiotic-induced reduction endotoxaemia (fig 7A). Hence, most of the prebiotic-induced changes of hepatic inflammation and oxidative stress markers are also controlled by a GLP-2-dependent mechanism. We observed that mice treated concomitantly with the prebiotic and the GLP-2 antagonist or GLP-2 antagonist alone exhibit CD68, NADPHox and TLR4 mRNA levels (fig 7B–D) similar to the control mice, except for the PAI-1 mRNA levels (fig 7F) which remains equivalent to the prebiotic treated mice with or without GLP-2 antagonist treatment. Moreover, GLP-2 antagonist treatment completely blocked the enhanced proglucagon, ZO1 and occludin mRNA levels found in prebiotic fed mice that reach values similar to the control (fig 7H,I).

Chronic GLP-2 pharmacological treatment lowers endotoxaemia, improves gut permeability markers, and reduces systemic and hepatic inflammation, oxidative stress and macrophage infiltration markers

To study the impact of a pharmacological GLP-2 treatment, without modulation of the gut microbiota, we treated *ob/ob* mice with GLP-2 for 12 days. Body weight, food intake,

adiposity, liver weight were equivalent between Ob-CT mice and Ob-GLP-2 mice (supplemental data 3).

Importantly, we demonstrated that GLP-2 administration to *ob/ob* mice dramatically decreased plasma LPS by about 50% (fig 8A). This was accompanied by a lower plasma inflammatory tone (IL1 α , MIP-1 α , MCP-1, IL10) (fig 8B–E)). Furthermore, as reported in both prebiotics-fed mice studies, mRNA concentrations of macrophage infiltration (TLR4, CD68) (fig 8G,I), inflammation (TNF α , PAI-1) (fig 8F,J) and oxidative stress (iNOS, NADPHox) markers (fig 8H,K) were decreased in Ob-GLP-2 mice as compared to Ob-CT mice. Finally, ZO-1 and occludin staining immunohistochemical score analysis confirmed the strong impact of GLP-2 on the tight-junctions proteins (fig 8L). In accordance with the prebiotic effect, the immunohistochemical staining of both proteins localised along the apical cellular border was higher in Ob-GLP-2 as compared to Ob-CT (fig 8M).

Therefore, the gut peptide GLP-2 appears as a credible link between gut microbiota, gut permeability, and inflammatory tone.

DISCUSSION

Several reports have demonstrated that the gut microbiota participates in the development of obesity by several mechanisms, ie, by harvesting energy from the diet, by modulating the

Table 2 Changes in the gut microbiota upon administration of prebiotics impacts on portal plasma gut peptides

| Gut peptide | Ob-CT | Ob-Cell | Ob-Pre |
|--------------------------------|-----------------------------|-----------------------------|-----------------------------|
| GLP-1 (active) (pmol/l) | 7.65 ^a (1.52) | 7.71 ^a (1.62) | 21.15 ^b (6.71) |
| GIP (total) (pg/ml) | 207.91 ^a (37.76) | 180.71 ^a (27.53) | 114.02 ^b (16.92) |
| Pancreatic polypeptide (pg/ml) | 68.07 ^a (8.45) | 75.94 ^a (6.56) | 50.05 ^b (2.67) |
| Amylin (active) (pg/ml) | 358.87 ^a (36.12) | 364.99 ^a (45.07) | 504.90 ^b (58.34) |
| GLP-2 (ng/ml) | 0.56 ^a (0.06) | 0.62 ^a (0.04) | 0.75 ^b (0.05) |

Data are mean (SEM).
Data with different superscript letters are significantly different at $p < 0.05$, according to the post hoc ANOVA statistical analysis.
CT, Cell and Pre, respectively, refer to the selected *ob/ob* mice, fed a normal diet, non-prebiotic control diet or prebiotic diet.
GLP, glucose-dependent insulinotropic polypeptide; GIP, glucagon-like peptide.

synthesis of gut peptides involved in energy homeostasis, and/or by regulating fat storage.⁶³ We have recently demonstrated that mice fed a high-fat diet were characterised by an increase in gut permeability and metabolic endotoxaemia. The inflammatory phenotype of *ob/ob* mice originates from the gut microbiota, since changing the gut microbiota using antibiotics lowers endotoxaemia-induced inflammation and metabolic disorders.^{64–65} Recently, it has been proposed that this higher endotoxaemia in *ob/ob* mice and *db/db* mice was dependent on a disruption of the key tight-junction proteins, ZO-1 and occludin.²⁶ Here we confirm that obese mice exhibit an altered gut barrier, characterised by a disruption of tight-junction proteins. Among the mechanisms involved in this phenomenon, excessive TNF α production was proposed to help propagate the extension of a local or systemic inflammation and this inflammatory process per se would trigger the alteration of both junctional proteins.²⁴ Our data show that prebiotic-fed mice have a lower level of several plasma cytokines well-known

to promote tight-junction disruption such as TNF α , IL1b, IL1 α , IL6, INF γ .^{66–69} In addition, we also found a significant decrease of the chemokines MCP-1 and MIP-1a.
In the present study, we demonstrated, in two separate set of experiments, that changing gut microbiota of *ob/ob* mice in favour of the *Bifidobacterium* spp. is associated with a significant improvement of gut permeability measured in vivo; this phenomenon was linked to an increase in tight-junction mRNA expression and proteins distribution. The improved gut barrier observed in prebiotic-fed mice was correlated to the lower portal plasma LPS levels and inflammatory tone (ie, decrease in circulating cytokines). The leakage of gut microbiota-derived LPS into the portal blood is a well-established mechanism of metabolic endotoxaemia that triggers liver inflammation and oxidative stress.^{26–70} In the present studies, we found that lowering systemic inflammation by prebiotics is significantly correlated with a strong decrease in markers of oxidative and inflammatory stress in the liver tissue. Altogether,

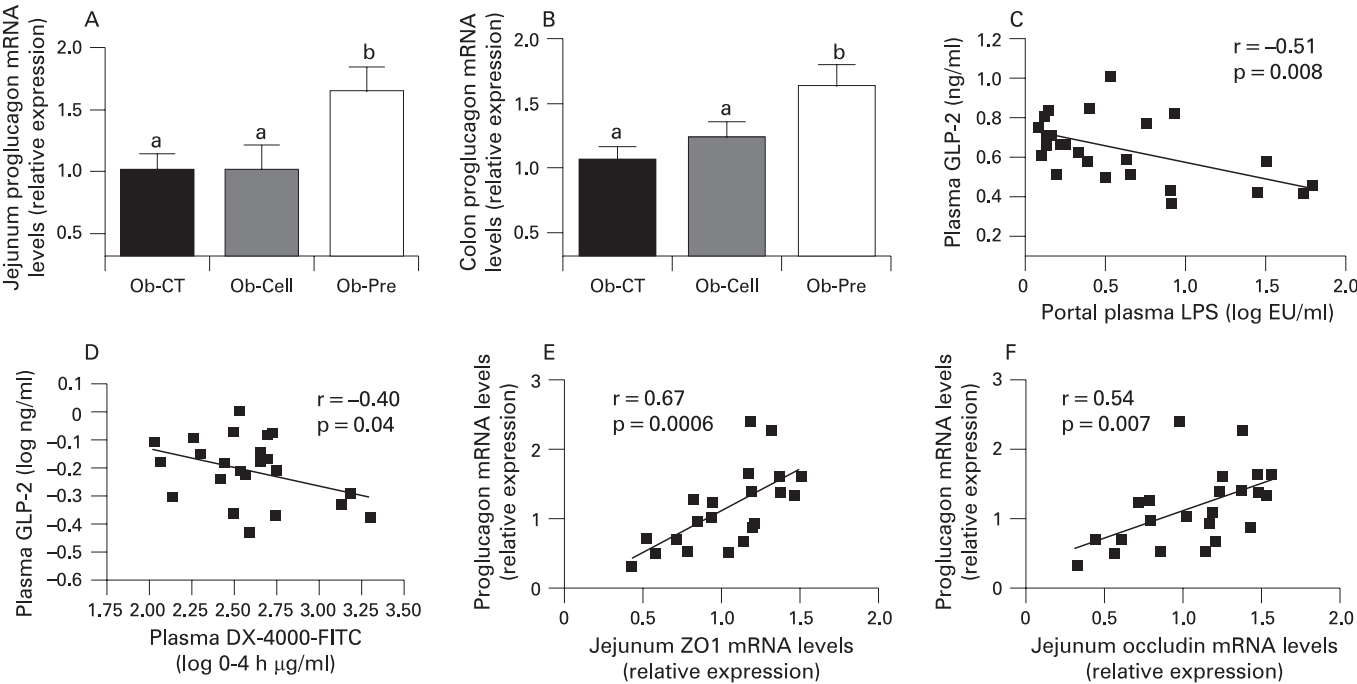


Figure 6 Prebiotic administration increases intestinal proglucagon mRNA and correlates with intestinal permeability markers. (A) Jejunum proglucagon mRNA concentrations; (B) proximal colon proglucagon mRNA concentrations in *ob/ob* mice fed a normal diet (Ob-CT), non-prebiotic control diet (Ob-Cell), prebiotic diet (Ob-Pre) for 5 weeks. Data are mean with the SEM. Data with different superscript letters are significantly different ($p < 0.05$), according to the post hoc ANOVA statistical analysis. Correlations between plasma GLP-2 levels and (C) plasma LPS plasma; or (D) DX-4000-FITC plasma levels. Correlations between proglucagon mRNA and (E) jejunum ZO-1 or (F) occludin mRNA concentrations; the inset corresponds to Pearson's r correlation and corresponding p value. DX 4000, dextran of molecular weight 4000 Da; FITC, fluorescein isothiocyanate; GLP-2, glucagon-like protein-2; LPS, lipopolysaccharide.

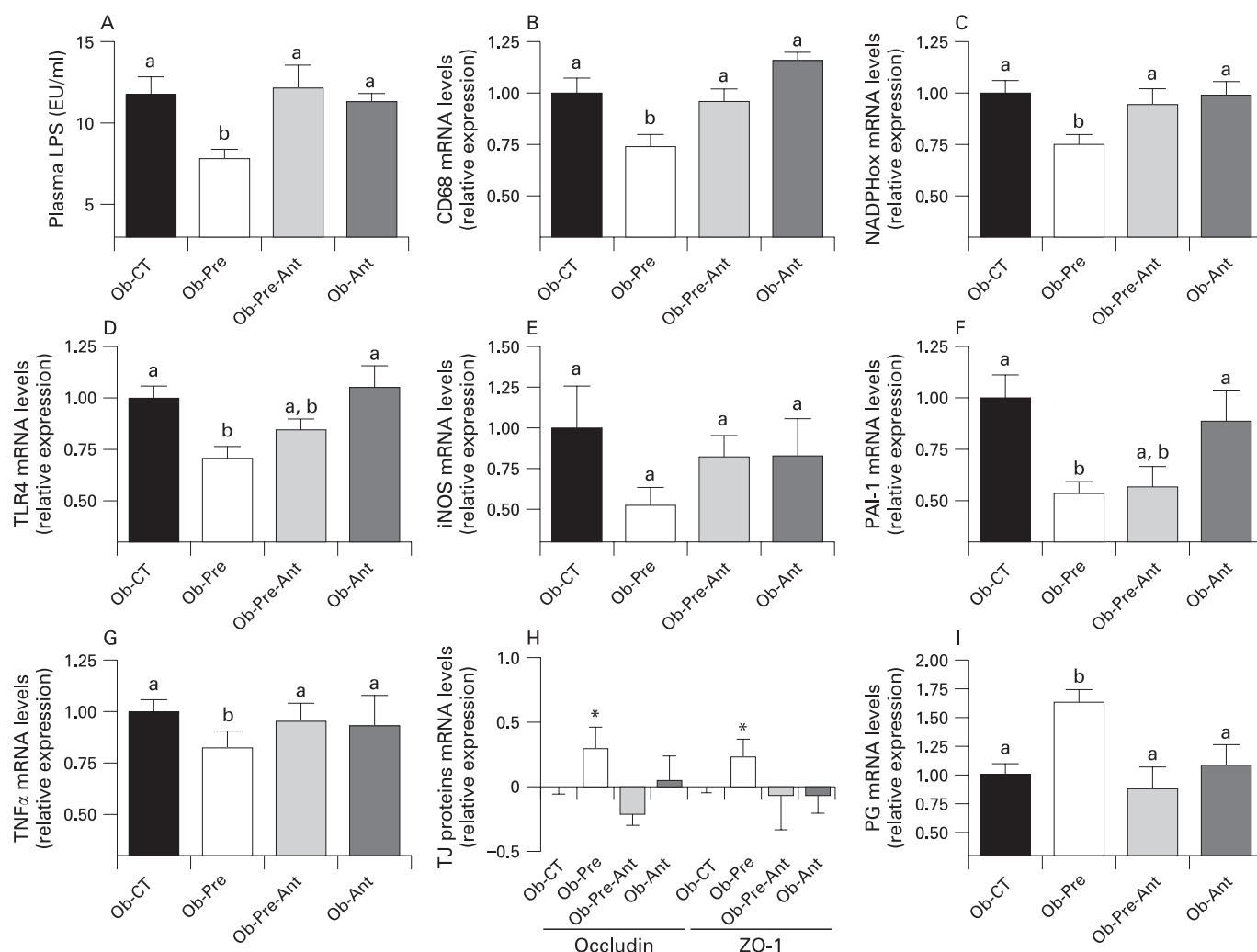


Figure 7 Chronic GLP-2 antagonist treatment blunts prebiotic-induced reduction in endotoxaemia and hepatic inflammatory tone. (A) Plasma LPS concentrations (EU/ml); (B,D) Macrophage infiltration markers: TLR4, CD68mRNA concentrations; (C,E) oxidative stress markers: NADPHox, iNOS mRNA concentrations; (F,G) hepatic inflammation: PAI-1, TNF α mRNA concentrations; (H) jejunum epithelial tight-junction protein markers (ZO-1 and occludin mRNA) concentrations; (I) jejunum proglucagon mRNA concentrations in *ob/ob* mice fed a normal diet and injected twice daily with a saline (Ob-CT), prebiotic diet and injected twice daily with a saline (Ob-Pre), prebiotic diet and injected twice daily with GLP-2 antagonist (ObPre-Ant), normal diet and injected twice daily with GLP-2 antagonist (Ob-Ant) for 4 weeks. Data are mean with the SEM. *Significantly different ($p < 0.05$) from Ob-CT and Ob-Pre-Ant according to the Kruskal–Wallis test analysis. Data with different superscript letters are significantly different ($p < 0.05$), according to the post hoc ANOVA statistical analysis. EU, endotoxin unit; GLP-2, glucagon-like protein-2; iNOS, inducible nitric oxide synthase; NADPHox, NADPH oxidase; PAI-1, plasminogen activator inhibitor-1; PG, proglucagon; TJ, tight junction; TLR, toll-like receptor; TNF, tumour necrosis factor.

these data strongly suggest that the modulation of the gut microbiota using prebiotics in obese mice, could act favourably on the intestinal barrier, thereby reducing endotoxaemia, systemic and liver inflammation, with beneficial consequences on associated metabolic disorders.

However, the mechanisms by which prebiotics improve gut permeability – in the particular context of obesity – are not fully understood. One potential explanation could arise from the putative role of the *Bifidobacterium* spp in maintaining the gut barrier. Interestingly, *Bifidobacterium* spp do not degrade intestinal mucus glycoproteins like other pathogenic bacteria do, and *Bifidobacterium* spp promote a healthier microvillus environment by preventing permeability and bacterial translocation.^{71–72} Among the putative mechanisms, it has been demonstrated that the prebiotic modulation of the gut microbiota increases villus height and crypt depth, and leads to a thicker mucosal layer in the jejunum and in the colon.⁷³ These effects are related to the bacterial fermentation of the

prebiotics. The resulting products of fermentation are mainly short-chain fatty acids (SCFAs), with butyrate acting as an energetic substrate for the colonocytes and having a trophic effect on mucosa.^{74–75} In epithelial monolayers model, it has been shown that other probiotics strains such as *Lactobacillus rhamnosus* GG and *Lactobacillus casei* DN-114-001 protect epithelial barrier function against *Escherichia coli*-induced redistribution of the tight-junction proteins.^{76–77} Besides the putative role of the SCFAs and specific bacterial strains, the exact mechanism underlying the relation between prebiotic-induced changes in gut microbiota and improved gut barrier function has not been described so far.

Here we found that changes in the gut microbiota of *ob/ob* mice exert a trophic effect on the intestine of Ob-Pre mice, a phenomenon associated with a higher proglucagon mRNA expression in both the jejunum and colon. We have previously demonstrated that prebiotic-induced changes in the gut microbiota promote GLP-1 synthesis (proglucagon mRNA and GLP-1

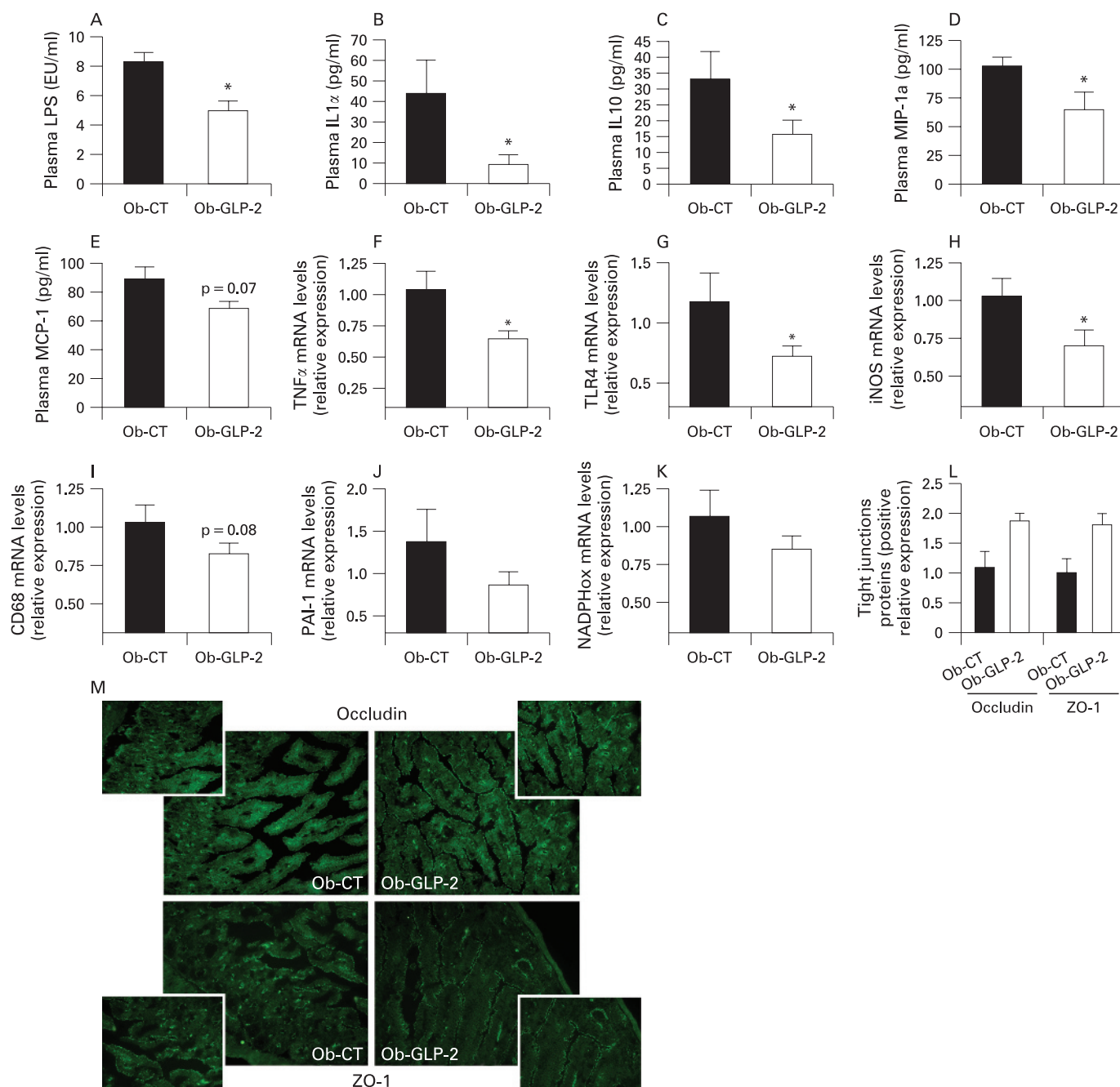


Figure 8 Chronic GLP-2 treatment lowers endotoxaemia, improves gut permeability markers, and reduces systemic and hepatic inflammation, oxidative stress and macrophage infiltration markers. (A) Plasma LPS concentrations (EU/ml); Cytokines and chemokines plasma levels (pg/ml): (B) IL1 α ; (C) IL10; (D) MIP-1a; (E) MCP-1; (F,J) hepatic inflammation: TNF α , PAI-1 mRNA concentrations; (G,I) macrophage infiltration markers: TLR4, CD68mRNA concentrations; (H,K) oxidative stress markers: iNOS, NADPHox mRNA; (L) immunohistochemistry score and (M) representative immunofluorescence staining of the jejunum epithelial tight-junction proteins (ZO-1 and occludin) measured in *ob/ob* mice injected twice daily with a saline vehicle (Ob-CT) or GLP-2 (Ob-GLP-2) for 12 days. Data are mean with the SEM. *Significantly different (p < 0.05) from Ob-CT mice according to the two-tailed Student t test. EU, endotoxin unit; GLP-2, glucagon-like peptide-2; iNOS, inducible nitric oxide synthase; IL, interleukin; LPS, lipopolysaccharide; MCP-1, monocyte chemoattractant protein-1; MIP-1a, macrophage inflammatory protein-1a; NADPHox, NADPH oxidase; TLR, toll-like receptor; TNF, tumour necrosis factor.

peptide content) in the proximal colon by a mechanism linked to the differentiation of precursor cells into enteroendocrine cells.^{33, 44–48} In the present study, we additionally found that changing gut microbiota using prebiotics is associated with an increased endogenous production of the glucagon-like peptide-2 (GLP-2). GLP-2 is a 33 amino acid peptide, formed, as GLP-1, from the cleavage of proglucagon peptide.⁵⁷ GLP-2 is associated with intestinal growth and adaptation in a variety of

pathological conditions, including post-resection intestinal adaptation, coeliac disease, parental nutrition-induced intestinal atrophy and inflammatory bowel disease.^{78–80} In addition, GLP-2 has also been demonstrated to enhance intestinal adaptation⁵⁷ and to reduce the internalisation of enteric bacteria in INT-407 enterocytes in vitro model.⁸¹ Strikingly, the intestinotrophic effects observed following prebiotic administration are similar to the physiological effect of GLP-2. The increased GLP-2

production is in accordance with our earlier study, where we found that changing the gut microbiota of rats fed a high-fat diet following a prebiotic treatment, doubled intestinal GLP-2 concentrations.⁴⁶ Besides, here we found that the higher endogenous GLP-2 production is associated with an improvement of the mucosal barrier function, leading to improved tight junctions and decreased plasma LPS concentrations and therefore blunted inflammatory and oxidative stresses. A recent report demonstrates that a chronic treatment with GLP-2 protects rats against the ischaemia-reperfusion-induced endotoxaemia and inflammation, by an unknown mechanism.⁸²

Our first experiment strongly suggests that the lower metabolic endotoxaemia and the consequent low-grade inflammation observed upon prebiotic feeding could be a mechanism involving an enhanced endogenous GLP-2 production. Indeed, we found that Ob-Pre fed mice exhibited a significant increase of plasma GLP-2 levels and that this parameter negatively correlates with markers of gut permeability. Along the same line, we found a positive correlation between intestinal proglucagon and tight-junction proteins mRNA (ZO-1, occludin). Altogether, these data led us to postulate that the prebiotic-induced intestinal proglucagon mRNA expression and the consequent GLP-2 production may positively impact on gut barrier integrity. Therefore, to investigate this hypothesis, we performed a second set of experiments where we treated mice concomitantly with the prebiotic and a GLP-2 antagonist. First, we confirm the improvement of inflammatory markers following the prebiotic treatment; second, and more importantly, we show that the GLP-2 antagonist completely blocks the major features of the prebiotic treatment. Hence, in absence of GLP-2 signalling, the prebiotic treatment failed to reduce plasma LPS levels, and most of the hepatic inflammatory and oxidative stress markers remained equivalent to the control mice. In addition, the GLP-2 antagonist blocks the positive effects of the prebiotic treatment on both intestinal tight-junction proteins and proglucagon mRNA. Altogether, both set of experiments strongly support that specific changes in gut microbiota improve gut permeability and inflammatory tone by a GLP-2 dependent mechanism.

To support the putative therapeutic effect of GLP-2 in the context of a low-grade inflammation associated with obesity, and in order to delineate the protective role of the GLP-2 independently of the modulation of the gut microbiota, we chronically treated mice with GLP-2. This third set of experiment clearly shows that GLP-2 treatment alone significantly lowers inflammatory tone in obese mice. We found that GLP-2 treated mice exhibited a lower metabolic endotoxaemia, and a lower systemic and hepatic inflammatory tone. These features were associated with a strong positive effect of GLP-2 on the tight-junction proteins distribution. This set of experiments demonstrates that GLP-2 can be useful to treat the altered gut barrier observed in obesity and diabetes, and therefore could lower the inflammatory tone associated with these diseases. It would be interesting to see whether the magnitude of those effects is similar in other models such as diet-induced obesity and diabetes (ie, non-leptin-deficient models).

While the molecular and cellular mechanisms underlying the effect of GLP-2 on the tight junctions and the gut barrier function remained to define, several hypotheses can be postulated. GLP-2 increases the rate of crypt cell proliferation, villus elongation and reduces apoptosis, leading to improved barrier function.⁸³ It has been proposed that insulin-like growth factor (IGF)-I acts as an essential target of GLP-2. Recent data

have shown that mice lacking IGF-I were resistant to GLP-2-induced intestinal growth, crypt-villus height, and crypt cell proliferation. Furthermore, GLP-2 administration increases intestinal IGF-I secretion in vitro and enhances intestinal IGF-I mRNA transcript levels both in vitro and in vivo.⁸⁴ In addition to this potential mechanism, data suggest that the downstream molecular mechanism by which GLP-2 receptor activation controls barrier function could be related to the activation of the β -catenin signalling pathway.³⁹ Nonetheless, further studies are required to fully characterise the mechanisms through which GLP-2 improves gut barrier function.

Together, using the complementary approaches of the specific modulation of the gut microbiota, and of the pharmacological inhibition or activation of the GLP-2 receptor, our findings strongly suggest that GLP-2 participates to the modulation of the gut barrier function and the consequent systemic and hepatic inflammatory phenotype associated with obesity.

In addition, these data demonstrate that a selective modulation of the gut microbiota improves intestinal permeability and inflammatory markers during obesity and diabetes, via an unexpected mechanism such as higher GLP-2 endogenous production.

Thus, we propose that a selective gut microbiota modulation controls and increases endogenous production of the intestinotrophic proglucagon derived peptides GLP-2, and consequently improves gut barrier functions by a GLP-2-dependent mechanism. These new findings demonstrate the usefulness of developing specific therapeutic strategies using GLP-2 to tackle metabolic endotoxaemia and disorders associated with obesity and diabetes, and that gut microbiota modulation could be an interesting tool in this context.

Acknowledgement: We thank RM Goebbels for assistance with the histology.

Funding: PDC is Postdoctoral Researcher from the FRS-FNRS (Fonds de la Recherche Scientifique) Belgium. NMD and PDC are recipients of FSR and FRSM subsidies (Fonds spéciaux de recherches, UCL, Belgium; Fonds de la recherche scientifique médicale, Belgium). SP and TVDW are Postdoctoral Researchers from the Research Foundation – Flanders (Fonds voor Wetenschappelijk Onderzoek (FWO) – Vlaanderen).

Competing interests: None.

Ethics approval: Animal experiments were approved by the local ethics committee and housing conditions were as specified by the Belgian Law of 14 November 1993 on the protection of laboratory animals (agreement n° LA 1230314).

REFERENCES

1. **Alberti KG**, Zimmet P, Shaw J. The metabolic syndrome – a new worldwide definition. *Lancet* 2005;**366**:1059–62.
2. **Matrese G**, Mantzoros C, La CA. Leptin and adipocytokines: bridging the gap between immunity and atherosclerosis. *Curr Pharm Des* 2007;**13**:3676–80.
3. **Backhed F**, Manchester JK, Semenkovich CF, *et al.* Mechanisms underlying the resistance to diet-induced obesity in germ-free mice. *Proc Natl Acad Sci U S A* 2007;**104**:979–84.
4. **Ley RE**, Backhed F, Turnbaugh P, *et al.* Obesity alters gut microbial ecology. *Proc Natl Acad Sci U S A* 2005;**102**:11070–5.
5. **Backhed F**, Ding H, Wang T, *et al.* The gut microbiota as an environmental factor that regulates fat storage. *Proc Natl Acad Sci U S A* 2004;**101**:15718–23.
6. **Canli PD**, Babiloni R, Knauf C, *et al.* Changes in gut microbiota control metabolic endotoxaemia-induced inflammation in high-fat diet-induced obesity and diabetes in mice. *Diabetes* 2008;**57**:1470–81.
7. **Canli PD**, Amar J, Iglesias MA, *et al.* Metabolic endotoxaemia initiates obesity and insulin resistance. *Diabetes* 2007;**56**:1761–72.
8. **Canli PD**, Neyrinck AM, Fava F, *et al.* Selective increases of bifidobacteria in gut microflora improve high-fat-diet-induced diabetes in mice through a mechanism associated with endotoxaemia. *Diabetologia* 2007;**50**:2374–83.
9. **Cai D**, Yuan M, Frantz DF, *et al.* Local and systemic insulin resistance resulting from hepatic activation of IKK-beta and NF-kappaB. *Nat Med* 2005;**11**:183–90.
10. **Shi H**, Kokoeva MV, Inouye K, *et al.* TLR4 links innate immunity and fatty acid-induced insulin resistance. *J Clin Invest* 2006;**116**:3015–25.

11. **Poggi M**, Bastelica D, Gual P, *et al*. C3H/HeJ mice carrying a toll-like receptor 4 mutation are protected against the development of insulin resistance in white adipose tissue in response to a high-fat diet. *Diabetologia* 2007;**50**:1267–76.
12. **Song MJ**, Kim KH, Yoon JM, *et al*. Activation of Toll-like receptor 4 is associated with insulin resistance in adipocytes. *Biochem Biophys Res Commun* 2006;**346**:739–45.
13. **Suganami T**, Mieda T, Itoh M, *et al*. Attenuation of obesity-induced adipose tissue inflammation in C3H/HeJ mice carrying a Toll-like receptor 4 mutation. *Biochem Biophys Res Commun* 2007;**354**:45–9.
14. **Tsukumo DM**, Carvalho-Filho MA, Carvalheira JB, *et al*. Loss-of-function mutation in Toll-like receptor 4 prevents diet-induced obesity and insulin resistance. *Diabetes* 2007;**56**:1986–98.
15. **Adachi Y**, Moore LE, Bradford BU, *et al*. Antibiotics prevent liver injury in rats following long-term exposure to ethanol. *Gastroenterology* 1995;**108**:218–24.
16. **Lichtman SN**, Keku J, Schwab JH, *et al*. Hepatic injury associated with small bowel bacterial overgrowth in rats is prevented by metronidazole and tetracycline. *Gastroenterology* 1991;**100**:513–9.
17. **Lichtman SN**, Sartor RB, Keku J, *et al*. Hepatic inflammation in rats with experimental small intestinal bacterial overgrowth. *Gastroenterology* 1990;**98**:414–23.
18. **Nanji AA**, Khettry U, Sadrzadeh SM, *et al*. Severity of liver injury in experimental alcoholic liver disease. Correlation with plasma endotoxin, prostaglandin E2, leukotriene B4, and thromboxane B2. *Am J Pathol* 1993;**142**:367–73.
19. **Nishida J**, Ekatakin W, McDonnell D, *et al*. Ethanol exacerbates hepatic microvascular dysfunction, endotoxemia, and lethality in septic mice. *Shock* 1994;**1**:413–8.
20. **Enomoto N**, Ikejima K, Yamashina S, *et al*. Kupffer cell sensitization by alcohol involves increased permeability to gut-derived endotoxin. *Alcohol Clin Exp Res* 2001;**25**(6 Suppl):51S–4S.
21. **Enomoto N**, Ikejima K, Bradford B, *et al*. Alcohol causes both tolerance and sensitization of rat Kupffer cells via mechanisms dependent on endotoxin. *Gastroenterology* 1998;**115**:443–51.
22. **Rivera CA**, Bradford BU, Seabra V, *et al*. Role of endotoxin in the hypermetabolic state after acute ethanol exposure. *Am J Physiol* 1998;**275**(6 Pt 1):G1252–8.
23. **Rivera CA**, Tchamitchi MH, Mendoza L, *et al*. Endotoxemia and hepatic injury in a rodent model of hindlimb unloading. *J Appl Physiol* 2003;**95**:1656–63.
24. **Mazzon E**, Cuzzocrea S. Role of TNF- α in ileum tight junction alteration in mouse model of restraint stress. *Am J Physiol Gastrointest Liver Physiol* 2008;**294**:G1268–80.
25. **Paulos CM**, Wrzesinski C, Kaiser A, *et al*. Microbial translocation augments the function of adoptively transferred self/tumor-specific CD8 T cells via TLR4 signaling. *J Clin Invest* 2007;**117**:2197–204.
26. **Brun P**, Castagliuolo I, Leo VD, *et al*. Increased intestinal permeability in obese mice: new evidence in the pathogenesis of nonalcoholic steatohepatitis. *Am J Physiol Gastrointest Liver Physiol* 2007;**292**:G518–25.
27. **Turnbaugh PJ**, Backhed F, Fulton L, *et al*. Diet-induced obesity is linked to marked but reversible alterations in the mouse distal gut microbiome. *Cell Host Microbe* 2008;**3**:213–23.
28. **Wang Z**, Xiao G, Yao Y, *et al*. The role of bifidobacteria in gut barrier function after thermal injury in rats. *J Trauma* 2006;**61**:650–7.
29. **Griffiths EA**, Duffy LC, Schanbacher FL, *et al*. In vivo effects of bifidobacteria and lactoferrin on gut endotoxin concentration and mucosal immunity in Balb/c mice. *Dig Dis Sci* 2004;**49**:579–89.
30. **Wang ZT**, Yao YM, Xiao GX, *et al*. Risk factors of development of gut-derived bacterial translocation in thermally injured rats. *World J Gastroenterol* 2004;**10**:1619–24.
31. **Commene DM**, Shortt CT, Silvi S, *et al*. Effects of fermentation products of pro- and prebiotics on trans-epithelial electrical resistance in an in vitro model of the colon. *Nutr Cancer* 2005;**51**:102–9.
32. **Ruan X**, Shi H, Xia G, *et al*. Encapsulated Bifidobacteria reduced bacterial translocation in rats following hemorrhagic shock and resuscitation. *Nutrition* 2007;**23**:754–61.
33. **Cani PD**, Knauf C, Iglesias MA, *et al*. Improvement of glucose tolerance and hepatic insulin sensitivity by oligofructose requires a functional glucagon-like peptide 1 receptor. *Diabetes* 2006;**55**:1484–90.
34. **Shin ED**, Estall JL, Izzo A, *et al*. Mucosal adaptation to enteral nutrients is dependent on the physiologic actions of glucagon-like peptide-2 in mice. *Gastroenterology* 2005;**128**:1340–53.
35. **Thulesen J**, Knudsen LB, Hartmann B, *et al*. The truncated metabolite GLP-2 (3–33) interacts with the GLP-2 receptor as a partial agonist. *Regul Pept* 2002;**103**:9–15.
36. **Nelson DW**, Murali SG, Liu X, *et al*. Insulin-like growth factor I and glucagon-like peptide-2 responses to fasting followed by controlled or ad libitum refeeding in rats. *Am J Physiol Regul Integr Comp Physiol* 2008;**294**:R1175–84.
37. **Thulesen J**, Hartmann B, Hare KJ, *et al*. Glucagon-like peptide 2 (GLP-2) accelerates the growth of colonic neoplasms in mice. *Gut* 2004;**53**:1145–50.
38. **Kitchen PA**, Fitzgerald AJ, Goodlad RA, *et al*. Glucagon-like peptide-2 increases sucrase-isomaltase but not caudal-related homeobox protein-2 gene expression. *Am J Physiol Gastrointest Liver Physiol* 2000;**278**:G425–8.
39. **Dube PE**, Rowland KJ, Brubaker PL. Glucagon-like peptide-2 activates beta-catenin signaling in the mouse intestinal crypt: role of insulin-like growth factor-I. *Endocrinology* 2008;**149**:291–301.
40. **Van de Wiele T**, Boon N, Possemiers S, *et al*. Prebiotic effects of chicory inulin in the simulator of the human intestinal microbial ecosystem. *FEMS Microbiol Ecol* 2004;**51**:143–53.
41. **Boon N**, De Windt W, Verstraete W, *et al*. Evaluation of nested PCR–DGGE (denaturing gradient gel electrophoresis) with group-specific 16S rRNA primers for the analysis of bacterial communities from different wastewater treatment plants. *Fems Microbiol Ecol* 2002;**39**:101–12.
42. **Possemiers S**, Bolca S, Grootaert C, *et al*. The prenylflavonoid isoxanthohumol from hops (*Humulus lupulus* L.) is activated into the potent phytoestrogen 8-prenylnaringenin in vitro and in the human intestine. *J Nutr* 2006;**136**:1862–7.
43. **Wang Q**, Fang CH, Hasselgren PO. Intestinal permeability is reduced and IL-10 levels are increased in septic IL-6 knockout mice. *Am J Physiol Regul Integr Comp Physiol* 2001;**281**:R1013–23.
44. **Cani PD**, Hoste S, Guiot Y, *et al*. Dietary non-digestible carbohydrates promote L-cell differentiation in the proximal colon of rats. *Br J Nutr* 2007;**98**:32–7.
45. **Delzenne NM**, Cani PD, Neyrinck AM. Modulation of glucagon-like peptide 1 and energy metabolism by inulin and oligofructose: experimental data. *J Nutr* 2007;**137**:2547S–51S.
46. **Cani PD**, Neyrinck AM, Maton N, *et al*. Oligofructose promotes satiety in rats fed a high-fat diet: involvement of glucagon-like peptide-1. *Obes Res* 2005;**13**:1000–7.
47. **Cani PD**, Daubioul CA, Reusens B, *et al*. Involvement of endogenous glucagon-like peptide-1(7–36) amide on glycaemia-lowering effect of oligofructose in streptozotocin-treated rats. *J Endocrinol* 2005;**185**:457–65.
48. **Cani PD**, Dewever C, Delzenne NM. Inulin-type fructans modulate gastrointestinal peptides involved in appetite regulation (glucagon-like peptide-1 and ghrelin) in rats. *Br J Nutr* 2004;**92**:521–6.
49. **McClellan PL**, Irwin N, Cassidy RS, *et al*. GIP receptor antagonism reverses obesity, insulin resistance, and associated metabolic disturbances induced in mice by prolonged consumption of high-fat diet. *Am J Physiol Endocrinol Metab* 2007;**293**:E1746–55.
50. **Gault VA**, McClellan PL, Cassidy RS, *et al*. Chemical gastric inhibitory polypeptide receptor antagonism protects against obesity, insulin resistance, glucose intolerance and associated disturbances in mice fed high-fat and cafeteria diets. *Diabetologia* 2007;**50**:1752–62.
51. **Althage MC**, Ford EL, Wang S, *et al*. Targeted ablation of GIP-producing cells in transgenic mice reduces obesity and insulin resistance induced by a high fat diet. *J Biol Chem* 2008;**283**:18365–76.
52. **Reimer RA**, McBurney MI. Dietary fiber modulates intestinal proglucagon messenger ribonucleic acid and postprandial secretion of glucagon-like peptide-1 and insulin in rats. *Endocrinology* 1996;**137**:3948–56.
53. **Delzenne NM**, Kok N, Deloye P, *et al*. Dietary fructans modulate polyamine concentration in the cecum of rats. *J Nutr* 2000;**130**:2456–60.
54. **Kok NN**, Morgan LM, Williams CM, *et al*. Insulin, glucagon-like peptide 1, glucose-dependent insulinotropic polypeptide and insulin-like growth factor I as putative mediators of the hypolipidemic effect of oligofructose in rats. *J Nutr* 1998;**128**:1099–103.
55. **Urias-Silvas JE**, Cani PD, Delmee E, *et al*. Physiological effects of dietary fructans extracted from *Agave tequilana* Gto. and *Dasylium* spp. *Br J Nutr* 2008;**99**:254–61.
56. **Delmee E**, Cani PD, Gual G, *et al*. Relation between colonic proglucagon expression and metabolic response to oligofructose in high fat diet-fed mice. *Life Sci* 2006;**79**:1007–13.
57. **Dube PE**, Brubaker PL. Frontiers in glucagon-like peptide-2: multiple actions, multiple mediators. *Am J Physiol Endocrinol Metab* 2007;**293**:E460–5.
58. **Drucker DJ**, Erlich P, Asa SL, *et al*. Induction of intestinal epithelial proliferation by glucagon-like peptide 2. *Proc Natl Acad Sci U S A* 1996;**93**:7911–6.
59. **Jasleen J**, Ashley SW, Shimoda N, *et al*. Glucagon-like peptide 2 stimulates intestinal epithelial proliferation in vitro. *Dig Dis Sci* 2002;**47**:1135–40.
60. **Cameron HL**, Perdue MH. Stress impairs murine intestinal barrier function: improvement by glucagon-like peptide-2. *J Pharmacol Exp Ther* 2005;**314**:214–20.
61. **Cameron HL**, Yang PC, Perdue MH. Glucagon-like peptide-2-enhanced barrier function reduces pathophysiology in a model of food allergy. *Am J Physiol Gastrointest Liver Physiol* 2003;**284**:G905–12.
62. **Benjamin MA**, McKay DM, Yang PC, *et al*. Glucagon-like peptide-2 enhances intestinal epithelial barrier function of both transcellular and paracellular pathways in the mouse. *Gut* 2000;**47**:112–9.
63. **Cani PD**, Delzenne NM. Gut microflora as a target for energy and metabolic homeostasis. *Curr Opin Clin Nutr Metab Care* 2007;**10**:729–34.
64. **Bigorgne AE**, Bouchet-Delbos L, Naveau S, *et al*. Obesity-induced lymphocyte hyperresponsiveness to chemokines: a new mechanism of fatty liver inflammation in obese mice. *Gastroenterology* 2008;**134**:1459–69.
65. **Membréz M**, Blancher F, Jaquet M, *et al*. Gut microbiota modulation with norfloxacin and ampicillin enhances glucose tolerance in mice. *FASEB J* 2008;**22**:2416–26.
66. **Yang R**, Han X, Uchiyama T, *et al*. IL-6 is essential for development of gut barrier dysfunction after hemorrhagic shock and resuscitation in mice. *Am J Physiol Gastrointest Liver Physiol* 2003;**285**:G621–9.
67. **Adams RB**, Planchon SM, Roche JK. IFN- γ modulation of epithelial barrier function. Time course, reversibility, and site of cytokine binding. *J Immunol* 1993;**150**:2356–63.
68. **Coyne CB**, Vanhook MK, Gambling TM, *et al*. Regulation of airway tight junctions by proinflammatory cytokines. *Mol Biol Cell* 2002;**13**:3218–34.
69. **Nusrat A**, Turner JR, Madara JL. Molecular physiology and pathophysiology of tight junctions. IV. Regulation of tight junctions by extracellular stimuli: nutrients, cytokines, and immune cells. *Am J Physiol Gastrointest Liver Physiol* 2000;**279**:G851–7.
70. **Sakaguchi S**, Furusawa S. Oxidative stress and septic shock: metabolic aspects of oxygen-derived free radicals generated in the liver during endotoxemia. *FEMS Immunol Med Microbiol* 2006;**47**:167–77.

71. **Caplan MS**, Miller-Catchpole R, Kaup S, *et al*. Bifidobacterial supplementation reduces the incidence of necrotizing enterocolitis in a neonatal rat model. *Gastroenterology* 1999;**117**:577–83.
72. **Ruseler-van Embden JG**, van Lieshout LM, Gosselink MJ, *et al*. Inability of *Lactobacillus casei* strain GG, *L. acidophilus*, and *Bifidobacterium bifidum* to degrade intestinal mucus glycoproteins. *Scand J Gastroenterol* 1995;**30**:675–80.
73. **Kleessen B**, Hartmann L, Blaut M. Fructans in the diet cause alterations of intestinal mucosal architecture, released mucins and mucosa-associated bifidobacteria in gnotobiotic rats. *Br J Nutr* 2003;**89**:597–606.
74. **Bartholome AL**, Albin DM, Baker DH, *et al*. Supplementation of total parenteral nutrition with butyrate acutely increases structural aspects of intestinal adaptation after an 80% jejunoleal resection in neonatal piglets. *JPEN J Parenter Enter Nutr* 2004;**28**:210–22.
75. **Tappenden KA**, Drozdowski LA, Thomson AB, *et al*. Short-chain fatty acid-supplemented total parenteral nutrition alters intestinal structure, glucose transporter 2 (GLUT2) mRNA and protein, and proglucagon mRNA abundance in normal rats. *Am J Clin Nutr* 1998;**68**:118–25.
76. **Johnson-Henry KC**, Donato KA, Shen-Tu G, *et al*. *Lactobacillus rhamnosus* strain GG prevents enterohemorrhagic *Escherichia coli* O157:H7-induced changes in epithelial barrier function. *Infect Immun* 2008;**76**:1340–8.
77. **Parassol N**, Freitas M, Thoreux K, *et al*. *Lactobacillus casei* DN-114 001 inhibits the increase in paracellular permeability of enteropathogenic *Escherichia coli*-infected T84 cells. *Res Microbiol* 2005;**156**:256–62.
78. **Martin GR**, Wallace LE, Hartmann B, *et al*. Nutrient-stimulated GLP-2 release and crypt cell proliferation in experimental short bowel syndrome. *Am J Physiol Gastrointest Liver Physiol* 2005;**288**:G431–8.
79. **Thulesen J**, Hartmann B, Kissow H, *et al*. Intestinal growth adaptation and glucagon-like peptide 2 in rats with ileal–jejunal transposition or small bowel resection. *Dig Dis Sci* 2001;**46**:379–88.
80. **Jeppesen PB**, Hartmann B, Thulesen J, *et al*. Glucagon-like peptide 2 improves nutrient absorption and nutritional status in short-bowel patients with no colon. *Gastroenterology* 2001;**120**:806–15.
81. **Chiba M**, Sanada Y, Kawano S, *et al*. Glicentin inhibits internalization of enteric bacteria by cultured INT-407 enterocytes. *Pediatr Surg Int* 2007;**23**:551–4.
82. **Zhang W**, Zhu W, Zhang J, *et al*. Protective effects of glucagon-like peptide 2 on intestinal ischemia-reperfusion rats. *Microsurgery* 2008;**28**:285–90.
83. **Tsai CH**, Hill M, Asa SL, *et al*. Intestinal growth-promoting properties of glucagon-like peptide-2 in mice. *Am J Physiol* 1997;**273**(1 Pt 1):E77–84.
84. **Dube PE**, Forse CL, Bahrami J, *et al*. The essential role of insulin-like growth factor-1 in the intestinal tropic effects of glucagon-like peptide-2 in mice. *Gastroenterology* 2006;**131**:589–605.

Editor's quiz: GI snapshot

A gastrointestinal cause for heart failure

CLINICAL PRESENTATION

A 67-year-old man presented with worsening shortness of breath on exertion and peripheral oedema of 3 months duration. He had evidence of heart failure including raised jugular venous pressure, gallop rhythm and bilateral pedal oedema. A non-tender liver was palpable about 2–3 cm below the costal margin in the mid-clavicular line. Laboratory investigations revealed iron deficiency anaemia (haemoglobin 6.1 g/dl, mean corpuscular volume 71 fl) and a minimally raised alkaline phosphatase of 130 IU/l (normal range, 25–120 IU/l). His serum ferritin was 10 ng/ml (normal range, 15–250 ng/ml).

Transthoracic echocardiogram demonstrated evidence of hyperdynamic left ventricle and biventricular failure. Multiple enhancing “lesions” within the liver with enhancement of the hepatic veins and inferior vena cava was evident on the arterial phase of computerised tomography of the abdomen (fig 1).

QUESTION

What is your diagnosis?

See page 1128 for the answer.

This case is submitted by:

A Aravinthan, Y Al-naeeb, Z Abubacker, P Richardson

Luton and Dunstable Hospital, Luton, Bedfordshire, UK

Correspondence to: Dr P Richardson, Luton and Dunstable Hospital, Lewsey Road, Luton LU4 0DZ, UK; aaravinthan@doctors.org.uk

Competing interests: None.

Patient consent: Obtained.

Gut 2009;**58**:1103. doi:10.1136/gut.2008.172536

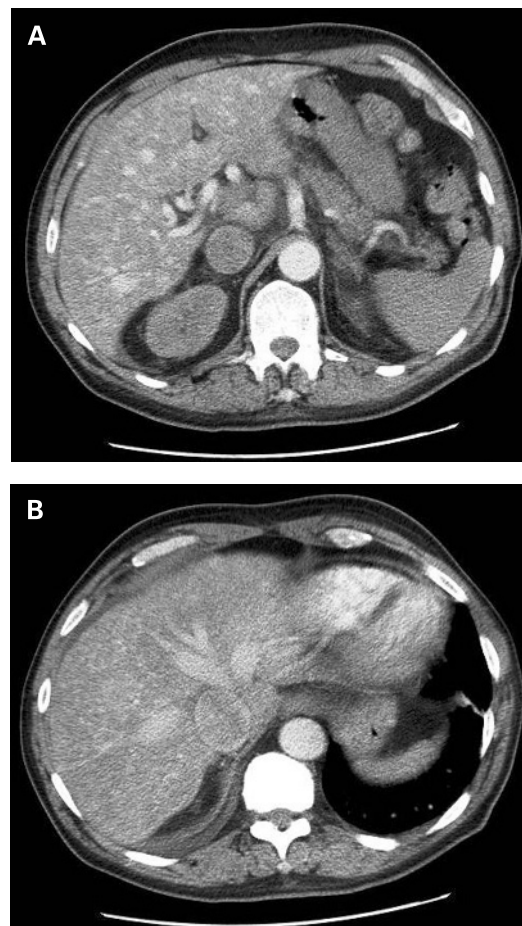


Figure 1 Multiple enhancing “lesions” within the liver (A), followed by enhancement of hepatic veins and inferior vena cava (B) on arterial phase of computed tomography of liver.