



OPEN ACCESS

Open Access
Scan to access more
free content

ORIGINAL ARTICLE

Demonstration of the usefulness of epigenetic cancer risk prediction by a multicentre prospective cohort study

Kiyoshi Asada,¹ Takeshi Nakajima,² Taichi Shimazu,³ Nobutake Yamamichi,⁴ Takao Maekita,⁵ Chizu Yokoi,^{2,6} Ichiro Oda,² Takayuki Ando,¹ Takeichi Yoshida,⁵ Sohachi Nanjo,¹ Mitsuhiro Fujishiro,⁴ Takuji Gotoda,^{2,7} Masao Ichinose,⁵ Toshikazu Ushijima¹

¹Division of Epigenomics, National Cancer Center Research Institute, Tokyo, Japan

²Endoscopy Division, National Cancer Center Hospital, Tokyo, Japan

³Epidemiology and Prevention Division, Research Center for Cancer Prevention and Screening, National Cancer Center, Tokyo, Japan

⁴Department of Gastroenterology, University of Tokyo, Tokyo, Japan

⁵Second Department of Internal Medicine, Wakayama Medical University, Wakayama, Japan

⁶Department of Gastroenterology and Hepatology, National Center for Global Health and Medicine, Tokyo, Japan

⁷Department of Gastroenterology and Hepatology, Tokyo Medical University, Tokyo, Japan

Correspondence to

Toshikazu Ushijima, Division of Epigenomics, National Cancer Center Research Institute, 5-1-1 Tsukiji, Chuo-ku, Tokyo 104-0045, Japan; tushijim@ncc.go.jp

KA and TN contributed equally.

Received 21 February 2014

Revised 27 April 2014

Accepted 8 May 2014

Published Online First

2 June 2014



CrossMark

To cite: Asada K, Nakajima T, Shimazu T, et al. *Gut* 2015;**64**: 388–396.

ABSTRACT

Background Epigenetic alterations accumulate in normal-appearing tissues of patients with cancer, producing an epigenetic field defect. Cross-sectional studies show that the degree of the defect may be associated with risk in some types of cancer, especially cancers associated with chronic inflammation.

Objective To demonstrate, by a multicentre prospective cohort study, that the risk of metachronous gastric cancer after endoscopic resection (ER) can be predicted by assessment of the epigenetic field defect using methylation levels.

Design Patients with early gastric cancer, aged 40–80 years, who planned to have, or had undergone, ER, were enrolled at least 6 months after *Helicobacter pylori* infection discontinued. Methylation levels of three preselected genes (*miR-124a-3*, *EMX1* and *NKX6-1*) were measured by quantitative methylation-specific PCR. Patients were followed up annually by endoscopy, and the primary endpoint was defined as detection of a metachronous gastric cancer. Authentic metachronous gastric cancers were defined as cancers excluding those detected within 1 year after the enrolment.

Results Among 826 patients enrolled, 782 patients had at least one follow-up, with a median follow-up of 2.97 years. Authentic metachronous gastric cancers developed in 66 patients: 29, 16 and 21 patients at 1–2, 2–3 and ≥ 3 years after the enrolment, respectively. The highest quartile of the *miR-124a-3* methylation level had a significant univariate HR (95% CI) (2.17 (1.07 to 4.41); $p=0.032$) and a multivariate-adjusted HR (2.30 (1.03 to 5.10); $p=0.042$) of developing authentic metachronous gastric cancers. Similar trends were seen for *EMX1* and *NKX6-1*.

Conclusions Assessment of the degree of an epigenetic field defect is a promising cancer risk marker that takes account of life history.

INTRODUCTION

Epigenetic alterations, represented by aberrant DNA methylation, are deeply involved in carcinogenesis.^{1,2} Aberrant methylation accumulates in cancers and also in normal-appearing tissues, especially those of chronic inflammation-associated cancers, such as gastric cancers,^{3,4} hepatocellular carcinoma,^{5,6} oesophageal adenocarcinoma,^{7,8} colon cancers,⁹ colitic cancers^{10–12} and breast cancers.¹³

Significance of this study

What is already known about this subject?

- ▶ Epigenetic alterations, represented by aberrant DNA methylation, accumulate in cancers and also in normal-appearing tissues surrounding cancers.
- ▶ Cross-sectional studies show that aberrant methylation levels in normal tissues may be associated with a risk of cancer in some types of cancer, especially chronic inflammation-associated cancers.
- ▶ An epigenetic cancer risk marker is considered to reflect past exposure to environmental factors and to differ from single nucleotide polymorphism cancer risk markers that do not reflect life history.

What are the new findings?

- ▶ By a multicentre prospective cohort study with 826 patients, the methylation level in non-cancerous gastric mucosae of patients with gastric cancer was shown to be significantly ($p=0.042$) associated with an increased risk of developing metachronous gastric cancers.
- ▶ *miR-124a-3* is an informative marker gene for predicting the risk of developing a metachronous gastric cancer.

How might it impact on clinical practice in the foreseeable future?

- ▶ This is the first time that the usefulness of an epigenetic cancer risk marker has been demonstrated in any type of cancer by a multicentre prospective cohort study. This new class of cancer risk marker has the potential to be expanded to cancers of other tissues.
- ▶ The intensity of surveillance for metachronous gastric cancer can be adjusted depending upon the risk predicted by the *miR-124a-3* methylation level.

In such normal-appearing tissues, both tumour-suppressor genes (driver genes), such as *CDKN2A* and *MLH1* and many other genes that have little

expression in normal tissues (passenger genes), such as *HAND1*, are methylated. Driver genes are methylated only at low levels—that is, in a minor fraction of cells, in normal-appearing tissues. Passenger genes, however, are methylated at high levels—that is, in a large fraction of cells, reflecting the degree of past exposure to inducers of aberrant methylation.^{3 14}

The accumulation of such methylation was shown to be associated with a risk of cancer development by cross-sectional studies in the stomach,¹⁴ the liver,^{5 6} the urothelium,¹⁵ the oesophagus^{8 16} and the colon.¹⁷ In the stomach, a quantitative methylation analysis of both driver and passenger genes showed that patients with gastric cancer had higher methylation levels in normal-appearing tissues than those in healthy individuals.^{14 18} Furthermore, patients with multiple gastric cancers had significantly higher methylation levels than those with a single gastric cancer, whose methylation levels were higher than those in healthy individuals.¹⁹ This correlation in the three groups, together with the associations in various types of cancers, strongly supports the suggestion that the accumulation of aberrant methylation in non-cancerous tissues produces an epigenetic field for cancerisation (field defect) and that the presence of such a field is associated with cancer development.³

As an inducer of an epigenetic field defect in the stomach, *Helicobacter pylori* (*H. pylori*) infection was associated with high methylation levels in gastric mucosae.¹⁴ Chronic inflammation triggered by the infection was shown to be causally involved in methylation induction in Mongolian gerbils.²⁰ It is hypothesised that aberrant DNA methylation is induced in stem, progenitor and differentiated cells when active *H. pylori* infection is present³ because eradication of *H. pylori* leads to a decrease of methylation.^{21–23} Importantly, the methylation levels in gastric mucosae without active *H. pylori* infection, but not those in mucosae with active infection, were correlated with gastric cancer risk.^{14 19 24} Therefore, measurement of methylation levels in individuals without active *H. pylori* infection is expected to enable us to predict the cancer risk of an individual by analysing the degree of epigenetic field defect.

For incorporation of such a new type of cancer risk marker into practice, demonstration of its usefulness by a multicentre prospective cohort study is requisite. In gastric cancer, a prospective cohort study can be conducted for risk prediction of primary gastric cancer among healthy individuals and for prediction of a metachronous gastric cancer after endoscopic resection (ER). The need for the latter is becoming greater because an increasing number of patients with gastric cancer are now treated by ER and the incidence of metachronous gastric cancer has reached as high as 2.5% a year,²⁵ although eradication of *H. pylori* decreases or delays its occurrence.²⁶ Nevertheless, almost all patients treated by ER have similar risk factors and their stratification for future cancer risk has so far been impossible. In addition, this high incidence allows a prospective cohort study with a relatively small number of patients.

Here, we aimed to demonstrate, by a multicentre prospective cohort study, that the risk of metachronous gastric cancer can be predicted by assessment of an epigenetic field defect. This will provide a proof-of-concept that cancer risk prediction can be achieved using the epigenetic field defect.

PATIENTS AND METHODS

Patients

Eligibility was assessed for 964 patients with early gastric cancer aged 40–80 years and who planned to have, or had undergone,

endoscopic submucosal dissection, one of the procedures of ER, in one of three hospitals (National Cancer Center Hospital (NCC), Tokyo University Hospital (TYU) and Wakayama Medical University Hospital (WMU)) between 2008 and 2010. Patients were excluded if they had received additional gastrectomy, had cancer in other tissues, died of other diseases before a test for *H. pylori* infection or were receiving anticoagulant therapy and unable to suspend it, refused or had other complications. The remaining 850 patients were tested for *H. pylori* infection. When *H. pylori* infection was absent, they were enrolled at the assessment (n=388). When *H. pylori* infection was present (n=462), patients received eradication therapy and were enrolled at least 6 months after establishment of successful *H. pylori* eradication (n=438) (figure 1). A total of 826 patients were enrolled and at the time of enrolment, biopsy samples were taken from a fixed point in the antrum (the lesser curvature at 2 cm from the pyloric ring) for DNA methylation analysis. Written informed consent was obtained from all the patients and the study was approved by the institutional review boards at each hospital.

Detection of *H. pylori* infection, its eradication and the pepsinogen test

The presence of *H. pylori* infection was examined with the urea breath test (Otsuka, Tokushima, Japan), serum anti-*H. pylori* antibody (Eiken, Tokyo, Japan) and either the culture method or rapid urease test (Otsuka, Tokushima, Japan). To eradicate *H. pylori*, patients were treated with lansoprazole (30 mg), amoxicillin (750 mg) and clarithromycin (200 mg), each taken twice daily for 1 week. Successful eradication was established by negative results of the urea breath test 2 months or more after the eradication. When the eradication was unsuccessful, the patients received second-line eradication therapy. Implementation of third-line and further eradication therapy was left to the doctors in charge. Fasting blood samples were collected on the day of endoscopy at the enrolment and serum levels of pepsinogen I and II were measured by the LZ test (Eiken, Tokyo, Japan).

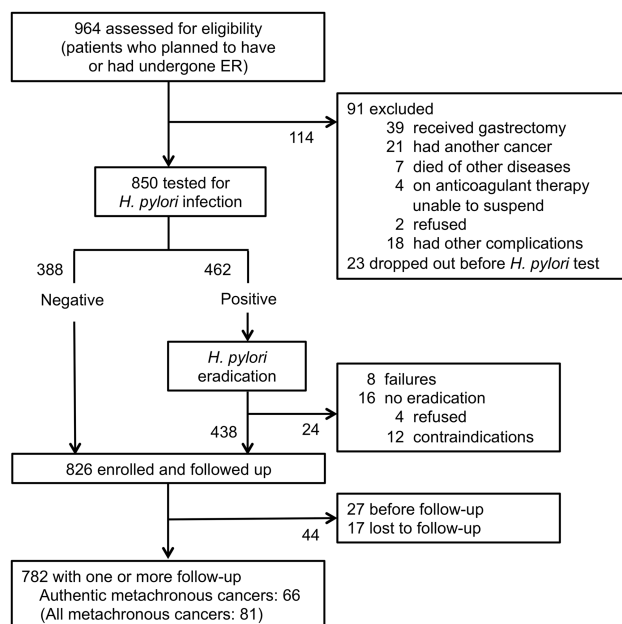


Figure 1 Study profile. ER, endoscopic resection.

Table 1 Baseline characteristics of patients according to the quartiles of DNA methylation levels of the three genes

Characteristic	DNA methylation level						DNA methylation level		
	<i>miR-124a-3</i> Q1 (lowest)	Q4 (highest)	p Value	<i>EMX1</i> Q1 (lowest)	Q4 (highest)	p Value	<i>NKX6-1</i> Q1 (lowest)	Q4 (highest)	p Value
DNA methylation level, median (IQR)	14.4 (8.3–23.0)	89.8 (88.1–91.9)		11.0 (6.3–16.5)	89.7 (87.4–91.9)		37.5 (24.9–46.3)	87.3 (84.5–90.4)	
Mean age, years (SD)	65.8 (8.5)	68.6 (6.1)	0.0007	65.4 (8.4)	68.7 (6.1)	0.0001	66.0 (8.2)	68.2 (6.7)	0.0247
Male (%)	77.4	84.1	0.3667	79.0	84.1	0.3552	80.0	82.1	0.9434
<i>H. pylori</i> infection before enrolment (%)	40.5	62.1	0.0004	39.5	54.4	0.0041	39.5	59.0	0.0008
Serum pepsinogen index (%)									
(+)	5.1	8.7	0.0010	6.2	7.2	0.0556	4.6	8.7	0.0072
(2+)	13.9	20.0		14.4	21.5		19.0	18.5	
(3+)	24.1	33.3		21.0	27.7		18.5	30.3	
Past history of ER (%)									
Twice	8.2	7.7	0.6443	9.2	10.3	0.5077	9.2	8.7	0.9836
Three times	1.0	2.1		1.5	2.6		2.1	1.5	
Pack-years of smoking (%)									
1–39	40.3	40.7	0.0175	39.7	41.5	0.0050	39.1	38.7	0.6757
≥40	20.4	33.9		21.2	35.8		26.3		
Green vegetable intake (%)									
Almost daily	28.3	36.7	0.0070	28.7	33.5	0.0426	33.7	35.5	0.9862

p values <0.05 are shown in bold type.

*Based on the χ^2 test or the Fisher's exact test for percentage difference and the analysis of variance test for mean age difference.

ER, endoscopic resection.

Follow-up by endoscopy and definition of metachronous cancers

Patients were followed up endoscopically once a year after the enrolment and the primary endpoint was defined as detection of a metachronous gastric cancer. If a patient was lost to follow-up, the follow-up was censored at the time of their last endoscopic examination. Metachronous cancers were defined according to the criteria of Moertel *et al*²⁷—namely, (i) each lesion is histopathologically malignant, (ii) each lesion is separated from another and (iii) each lesion is not the result of a local extension or metastasis of other lesions. In particular, ‘authentic’ metachronous gastric cancers were defined as those found after exclusion of cancers that developed within the first 1 year after the enrolment. This was because there is concern that a gastric cancer developing within the first 1 year after enrolment might have been a cancer undetected at the time of the enrolment^{28–30} and might be influenced by the promoting effect of *H. pylori* infection.²⁶

Marker genes and quantitative methylation analysis

Three marker genes (*miR-124a-3*, *EMX1* and *NKX6-1*) were preselected in our previous cross-sectional studies,^{31 32} and no other marker genes were analysed to avoid multiple testing. *miR-124a-3* was previously identified as a gene whose methylation levels remain high, even in individuals with past *H. pylori* infection.³¹ *EMX1* and *NKX6-1* were identified as genes highly informative for detecting patients with gastric cancer among patients with past *H. pylori* infection with ORs of 23.8 and 15.0, respectively.³² The methylation levels of the three genes were analysed by quantitative methylation-specific PCR (qMSP), as previously described.^{31 32} Briefly, bisulfite modification was performed using 1 µg of *Bam*HI-digested genomic DNA. qMSP was performed with primer sets specific to methylated and unmethylated sequences by real-time PCR using SYBR Green I (BioWhittaker Molecular Applications, Rockland, Maine, USA) and an iCycler thermal cycler (Bio-Rad Laboratories, Hercules, California, USA). To correct for the variation in the number of methylated and unmethylated DNA molecules, depending upon the dilution of the standard DNA, two specific batches of control DNA (fully methylated and unmethylated DNA) were analysed in each qMSP analysis. All the samples were measured twice and the correlation of methylation levels in the two analyses was high (correlation coefficient=0.94).

Statistical analysis

Our study question was whether, at any time, the methylation level in gastric mucosae could predict the risk of gastric cancer and we counted person-years since the enrolment (ie, since the time of biopsy of gastric mucosa).

To analyse the relationship between the methylation levels and a risk of metachronous gastric cancer, all the patients were categorised into quartiles (Q) according to the methylation level of one of the three genes (*miR-124a-3*, *EMX1* and *NKX6-1*), with the baseline characteristics of Q1 (lowest) and Q4 (highest) shown in table 1. Since we assumed that a higher methylation level would be associated with a risk of metachronous gastric cancer, we estimated the HR and 95% CI of Q4 compared with Q1 as the major goal.

Correlations between methylation levels of two genes were analysed using Spearman’s rank correlation coefficient. Cox proportional hazard regression analysis was used to calculate univariate and multivariate-adjusted HRs (95% CIs) of metachronous gastric cancer incidence. Kaplan–Meier analysis was

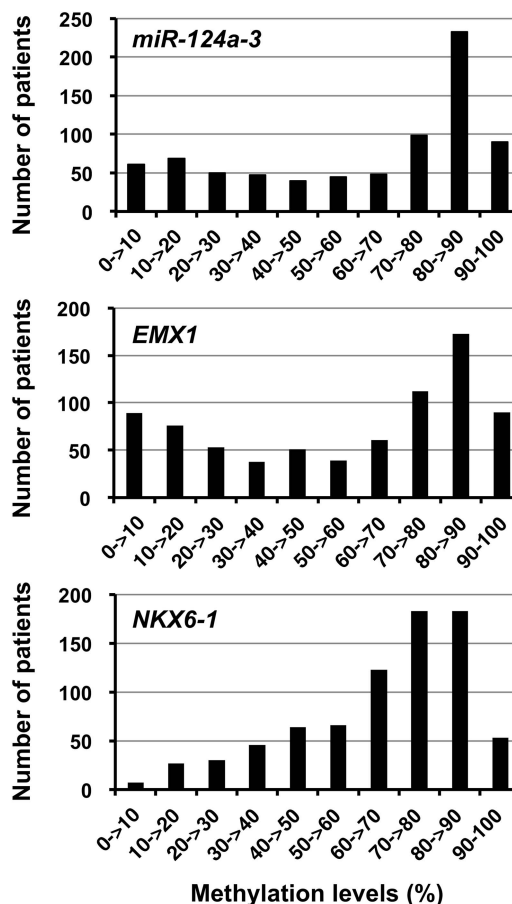


Figure 2 The distribution of methylation levels of *miR-124a-3*, *EMX1* and *NKX6-1* among the 782 patients. *miR-124a-3* and *EMX1* showed bimodal distributions, whereas *NKX6-1* showed a unimodal distribution.

performed to compare development of metachronous gastric cancer in the four quartiles. The proportional hazard assumptions for the methylation level in comparing Q4 with Q1 were evaluated and met using graphical and time-dependent variable approaches. Analyses were conducted using the SAS statistical software, V9.1 (SAS Institute Inc, Cary, North Carolina, USA). The results were considered significant when a p value <0.05 was obtained by two-sided tests.

In multivariate analysis, HRs were adjusted for potentially confounding factors (age (<50, 50–59, 60–69 or ≥70 years), gender, pepsinogen index (–, pepsinogen I>70 or pepsinogen I/II ratio >3; +, pepsinogen I≤70 and pepsinogen I/II ratio ≤3; 2+), pepsinogen I≤50 and pepsinogen I/II ratio ≤3; 3+), pepsinogen I≤30 and pepsinogen I/II ratio ≤2), smoking (0, 1–39 or ≥40 pack-years), green vegetable intake (≤2 days, 3–4 days or almost daily), hospital (NCC, TYU or WMU), *H. pylori* infection before the enrolment (positive or negative) and past history of ER (0, 1, 2 or 3 times)).

RESULTS

Enrolment and follow-up for a metachronous gastric cancer

Among the 826 enrolled patients, 782 patients (617, 97 and 68 patients at NCC, TYU and WMU, respectively) had at least one follow-up endoscopic examination (figure 1). Among the 782 patients, 81 patients (59, 10 and 12 patients in NCC, TYU and WMU, respectively) developed a metachronous gastric cancer. Among the 81 patients, 15, 29, 16 and 21 patients developed a metachronous cancer in <1, 1–2, 2–3 and ≥3 years after the

Table 2 Correlation among methylation levels of *miR-124a-3*, *EMX1*, and *NKX6-1*

	<i>miR-124a-3</i>		<i>EMX1</i>		<i>NKX6-1</i>	
	r	p Value	r	p Value	r	p Value
<i>miR-124a-3</i>	–	–	0.89	10 ⁻⁶	0.77	10 ⁻⁶
<i>EMX1</i>	0.89	10 ⁻⁶	–	–	0.70	10 ⁻⁶
<i>NKX6-1</i>	0.77	10 ⁻⁶	0.70	10 ⁻⁶	–	–

r, correlation coefficient.

enrolment, respectively, and 66 patients (52, 6 and 8 patients in NCC, TYU and WMU, respectively) were considered to have authentic metachronous gastric cancers. The median follow-up period was 2.97 years (2.99, 2.51 and 2.49 years in NCC, TYU and WMU, respectively). The median period for development of all the metachronous cancers after the enrolment was 1.88 years (1.92, 1.97 and 1.32 years in NCC, TYU and WMU, respectively).

Univariate analysis of the effect of methylation levels

The methylation levels of *miR-124a-3* and *EMX1* showed bimodal distribution while that of *NKX6-1* showed a unimodal distribution (figure 2). The methylation levels of the three genes were highly correlated (correlation coefficients=0.70–0.89; table 2), suggesting that methylation of these three genes reflected a shared mechanism, the epigenomic damage in gastric stem cells.

A univariate analysis using the authentic metachronous gastric cancers showed that Q4 (highest) *miR-124a-3* methylation had a significantly higher HR than Q1 (lowest) (95% CI) (2.17 (1.07 to 4.41); p=0.032) (p for trend=0.041) (table 3). The presence of the same trend in Q2 and Q3 with a trend p of 0.041 supported the higher HR in the Q4. Although not significant, similar trends were seen for *EMX1* and *NKX6-1* (p=0.075 and 0.11, respectively). A univariate analysis using all the metachronous gastric cancers also showed that Q4 *miR-124a-3* methylation had a higher HR than Q1 (95% CI) (1.71 (0.90 to 3.22); p=0.10) (p for trend=0.094) (table 3).

The influence of known risk factors for gastric cancer (age, gender, pepsinogen index, smoking and green vegetable intake) and other potential risk factors (hospital, *H. pylori* infection before enrolment, past history of ER) was analysed using the authentic metachronous gastric cancers. Significant associations were seen for young age (HR (95% CI)=3.50 (1.23 to 10.0); p=0.019), being female (0.43 (0.19 to 1.00); p=0.049), past history of ER (5.66 (2.01 to 15.9); p=0.001) and smoking (2.24 (1.27 to 3.96); p=0.006) (table 4). For all the metachronous gastric cancers, in addition to these factors, different hospitals had significantly different HRs (2.26 (1.21 to 4.21); p=0.01).

Multivariate analysis and Kaplan–Meier analysis

A multivariate analysis was conducted by adjusting for hospital, gender, age, *H. pylori* infection before enrolment, pepsinogen index, past history of ER, smoking and green vegetable intake (table 5). Using the authentic metachronous gastric cancers, the

Table 3 Univariate HRs (95% CI) of quartiles of the three genes for a metachronous gastric cancer

Variable	Quartile of DNA methylation level				p for trend
	Q1 (lowest)	Q2	Q3	Q4 (highest)	
No. of patients	195	196	196	195	
Authentic metachronous gastric cancers					
<i>miR-124a-3</i>					
No. of events	12	17	15	22	
HR (95% CI)	1	1.26 (0.60 to 2.65)	1.17 (0.55 to 2.51)	2.17 (1.07 to 4.41)	0.041
p Value		0.53	0.68	0.032	
<i>EMX1</i>					
No. of events	12	17	16	21	
HR (95% CI)	1	1.47 (0.70 to 3.08)	1.30 (0.62 to 2.76)	2.03 (1.00 to 4.14)	0.075
p Value		0.31	0.49	0.051	
<i>NKX6-1</i>					
No. of events	14	11	20	21	
HR (95% CI)	1	0.70 (0.32 to 1.54)	1.31 (0.66 to 2.60)	1.43 (0.73 to 2.82)	0.11
p Value		0.37	0.44	0.30	
All metachronous gastric cancers					
<i>miR-124a-3</i>					
No. of events	16	20	21	24	
HR (95% CI)	1	1.13 (0.59 to 2.19)	1.24 (0.65 to 2.38)	1.71 (0.90 to 3.22)	0.094
p Value		0.71	0.52	0.10	
<i>EMX1</i>					
No. of events	16	20	19	26	
HR (95% CI)	1	1.28 (0.66 to 2.48)	1.16 (0.60 to 2.26)	1.83 (0.98 to 3.42)	0.080
p Value		0.46	0.66	0.058	
<i>NKX6-1</i>					
No. of events	18	16	24	23	
HR (95% CI)	1	0.81 (0.41 to 1.58)	1.24 (0.67 to 2.29)	1.23 (0.66 to 2.28)	0.29
p Value		0.53	0.49	0.51	

p values <0.05 are shown in bold type.

Table 4 Univariate HRs (95% CI) of known and potential risk factors for metachronous gastric cancer

Variable	Authentic metachronous gastric cancers			All metachronous gastric cancers		
	No. of events	HR	p Value	No. of events	HR	p Value
Hospital						
NCC	52	1		59	1	
TYU	6	1.03 (0.44 to 2.40)	0.95	10	1.43 (0.73 to 2.80)	0.30
WMU	8	1.77 (0.84 to 3.73)	0.14	12	2.26 (1.21 to 4.21)	0.01
Age						
≥70	27	1		34	1	
<50	4	3.50 (1.23 to 10.0)	0.019	4	2.76 (0.98 to 7.79)	0.055
50–59	6	0.58 (0.24 to 1.39)	0.22	9	0.71 (0.34 to 1.48)	0.36
60–69	29	0.91 (0.54 to 1.54)	0.72	34	0.86 (0.54 to 1.39)	0.55
Gender						
Male	60	1		74	1	
Female	6	0.43 (0.19 to 1.00)	0.049	7	0.41 (0.19 to 0.89)	0.023
Pepsinogen index						
(–)	28	1		35	1	
(+)	5	2.18 (0.83 to 5.68)	0.11	6	1.88 (0.79 to 4.50)	0.15
(2+)	16	1.65 (0.89 to 3.06)	0.11	18	1.44 (0.82 to 2.55)	0.21
(3+)	17	1.56 (0.85 to 2.87)	0.15	22	1.54 (0.90 to 2.63)	0.12
<i>H. pylori</i> infection before the enrolment						
Positive	41	1		31	1	
Negative	25	1.02 (0.61 to 1.71)	0.94	50	0.93 (0.58 to 1.47)	0.74
Past history of ER (times)						
0	13	1		16	1	
1	43	1.18 (0.63 to 2.19)	0.6	49	1.10 (0.63 to 1.93)	0.74
2	5	0.81 (0.29 to 2.29)	0.69	10	1.38 (0.62 to 3.04)	0.43
3	5	5.66 (2.01 to 15.9)	0.001	6	5.46 (2.13 to 14.0)	0.0004
Smoking (pack-years)						
0	15	1		18	1	
1–39	17	1.17 (0.57 to 2.40)	0.66	25	1.55 (0.85 to 2.83)	0.15
≥40	29	2.24 (1.27 to 3.96)	0.006	32	2.06 (1.21 to 3.50)	0.007
Green vegetable intake (per week)						
≤2 days	20	1		25	1	
3–4 days	25	0.67 (0.37 to 1.21)	0.18	32	0.69 (0.41 to 1.16)	0.16
Almost daily	18	0.65 (0.34 to 1.23)	0.18	20	0.57 (0.32 to 1.02)	0.06

p values <0.05 are shown in bold type.

ER, endoscopic resection; NCC, National Cancer Center Hospital; TYU, Tokyo University Hospital; WMU, Wakayama Medical University Hospital.

Q4 (highest) *miR-124a-3* methylation had a higher HR than Q1 methylation (95% CI) (2.30 (1.03 to 5.10); $p=0.042$) (p for trend=0.057). when all the metachronous gastric cancers were used, Q4 *miR-124a-3* methylation also had a higher HR (95%CI) (1.99 (0.97 to 4.09); $p=0.061$) (p for trend=0.072). We also conducted a multivariate analysis using the HR of the Q4 with the combined Q1–Q3 as a reference (see online supplementary table S1) and confirmed an association between the high *miR-124a-3* methylation level and the occurrence of authentic metachronous gastric cancers (HR (95% CI)=1.95 (1.11 to 3.43); $p=0.021$).

Kaplan–Meier curves of the cumulative incidence rates of all the metachronous gastric cancers for patients were drawn for quartiles (Q1–Q4) of methylation levels for each of the three genes (*miR-124a-3*, *EMX1* and *NKX6-1*) (figure 3 and see online supplementary figure S1). Q4 methylation had higher incidences of a metachronous gastric cancer for all the three genes compared with Q1 methylation.

Analysis of potential confounding factors

The influence of *H. pylori* infection status before the enrolment did not affect the occurrence of metachronous gastric

cancers (table 4). However, taking its potential influence on the predictive power of the methylation level, we conducted a stratified analysis by the *H. pylori* infection status before the enrolment. The median methylation levels of the three marker genes were lower in patients without *H. pylori* infection than those in patients with *H. pylori* infection (see online supplementary table S2). In the stratified analysis, the Q4 (highest) *miR-124a-3* methylation levels showed HRs (95% CI) of 1.32 (0.37 to 4.77) and 2.43 (0.81 to 7.32) for the authentic metachronous gastric cancers in the patients with and without *H. pylori* infection, respectively (see online supplementary table S3).

The influence of a past history of ER on the predictive power of the methylation level was also analysed by stratifying patients according to this past history. Again, we observed consistent results in each stratum, although the p values were not statistically significant owing to the decreased numbers of events (see online supplementary table S4). Also, we analysed the variability in the time between the first ER and enrolment in each quartile (see online supplementary table S5). There were no increasing or decreasing trends in the time according to the marker quartiles. Additionally, we conducted a stratified analysis according

Table 5 Multivariate-adjusted HRs (95% CI) for a metachronous gastric cancer according to DNA methylation levels of the three genes

Variable	Quartile of DNA methylation level				p for trend
	Q1 (lowest)	Q2	Q3	Q4 (highest)	
No. of patients	195	196	196	195	
Authentic metachronous gastric cancers					
<i>miR-124a-3</i>					
No. of events	12	17	15	22	
HR* (95% CI)	1	1.33 (0.60 to 2.93)	1.15 (0.51 to 2.61)	2.30 (1.03 to 5.10)	0.057
p Value		0.49	0.73	0.042	
<i>EMX1</i>					
No. of events	12	17	16	21	
HR* (95% CI)	1	1.56 (0.71 to 3.41)	1.21 (0.55 to 2.67)	1.88 (0.86 to 4.13)	0.20
p Value		0.27	0.64	0.11	
<i>NKX6-1</i>					
No. of events	14	11	20	21	
HR* (95% CI)	1	0.76 (0.33 to 1.74)	1.39 (0.66 to 2.96)	1.52 (0.72 to 3.21)	0.12
p Value		0.52	0.39	0.27	
All metachronous gastric cancers					
<i>miR-124a-3</i>					
No. of events	16	20	21	24	
HR* (95% CI)	1	1.30 (0.64 to 2.64)	1.31 (0.65 to 2.64)	1.99 (0.97 to 4.09)	0.072
p Value		0.47	0.45	0.061	
<i>EMX1</i>					
No. of events	16	20	19	26	
HR* (95% CI)	1	1.47 (0.74 to 2.95)	1.16 (0.58 to 2.34)	1.84 (0.92 to 3.67)	0.150
p Value		0.27	0.68	0.082	
<i>NKX6-1</i>					
No. of events	18	16	24	23	
HR* (95% CI)	1	0.93 (0.46 to 1.87)	1.41 (0.72 to 2.76)	1.42 (0.71 to 2.81)	0.19
p Value		0.83	0.32	0.32	

p values <0.05 are shown in bold type.

*Adjusted for hospital, gender and age (<50, 50–59, 60–69 or ≥70), *H. pylori* infection before the enrolment (positive or negative), pepsinogen index, past history of endoscopic resection (0, 1, 2 or 3 times), pack-years of smoking (0, 1–39 or ≥40), and green vegetable intake (≤2 days per week, 3–4 days per week, or almost daily).

to the time between the first ER and enrolment (>5 or ≤5 years) and observed a similar association in each stratum (see online supplementary table S4).

DISCUSSION

It was shown for the first time by a multicentre prospective cohort study that assessment of an epigenetic field defect using methylation levels can be used as a biomarker of cancer risk. This study warrants translation of previous retrospective cross-sectional studies showing that methylation levels accumulated in various tissues are correlated with cancer risk.^{6 16 17 19 33 34} Thus, the intensity of surveillance for metachronous gastric cancer can be adjusted according to the risk predicted by the *miR-124a-3* methylation level. In addition, methylation accumulation is known to be caused by exposure to its inducers, such as chronic inflammation,³⁵ and cancer risk prediction using accumulated methylation is considered to take account of the life history of individuals. This point makes epigenetic cancer risk markers entirely different from genetic cancer risk markers, mostly single nucleotide polymorphisms, which cannot take account of the life history of individuals.

We defined the authentic metachronous gastric cancers because distinction of a metachronous cancer from that undetected at the time of the enrolment is difficult when it is detected at 1 year after the enrolment.^{28–30} Also, metachronous gastric cancer developing within 1 year after enrolment might

have been influenced by the promoting effect of *H. pylori* infection.²⁶ Analyses using both the authentic and all the metachronous gastric cancers were conducted and a clearer difference was seen using the authentic metachronous gastric cancers. For example, the methylation level of *miR-124a-3* was associated with development of an authentic metachronous gastric cancer with significant p values of 0.032 and 0.042 by univariate and multivariate analyses, respectively. This supported the hypothesis that the presence of an epigenetic field defect is associated with occurrence of independent multiple cancers.

The quality of this translational study was supported by multiple parameters. The follow-up rate of patients enrolled in this study was high (97.9%; 809/826). The median follow-up period reached 2.97 years and was uniform in the three hospitals. Accordingly, the bias introduced by incomplete follow-up is minimised. Also, all the patients were followed up with a consistent interval of 1 year in the three participating hospitals. This is reflected in the Kaplan–Meier curves, which show that the incidence of a metachronous gastric cancer increases every 1 year. Further, even after adjusting for multiple variables, the influence of methylation levels on the occurrence of authentic metachronous gastric cancer was significant. The fact that two variables (gender and smoking) known to be associated with gastric cancer risk³⁶ were confirmed as independent risk factors supported the statement that collection of lifestyle information was appropriately conducted in this study.

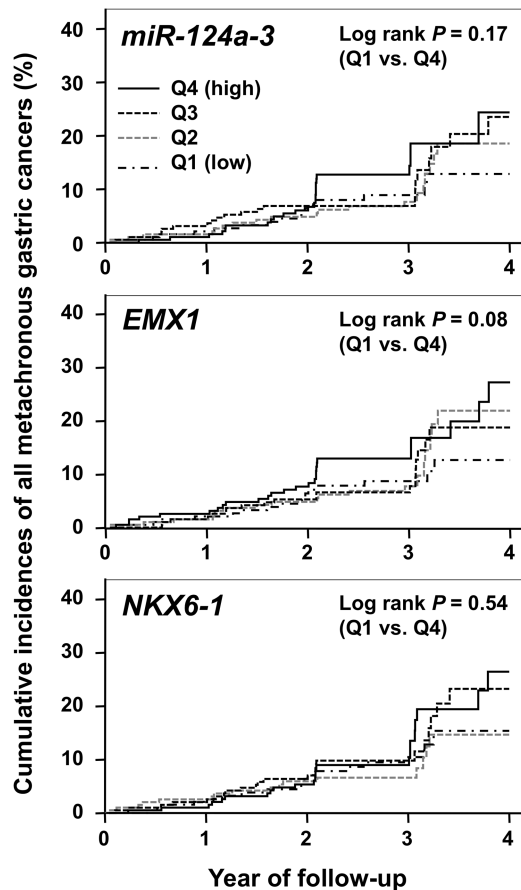


Figure 3 Cumulative incidence of all the metachronous gastric cancers for patients in quartile (Q1–Q4) of methylation levels of *miR-124a-3*, *EMX1*, and *NKX6-1*. The Q4 methylation had higher incidences of a metachronous gastric cancer than the Q1 methylation with p values of 0.17, 0.08 and 0.54 for *miR-124a-3*, *EMX1* and *NKX6-1*, respectively, by the log-rank test.

Nevertheless, several limitations of the study should be mentioned. First, the patient population was heterogeneous at enrolment for the past history of ER or the years since the first ER. These factors were associated with the occurrence of metachronous gastric cancer (table 4). Therefore, in addition to the multivariate analysis involving these factors, we conducted analyses stratified by these factors and found consistent results in each stratum, although the results were not statistically significant owing to the limited number of events (see online supplementary table S4). Thus, it is unlikely that these factors biased the association between the quartiles of *miR-124a-3* and metachronous gastric cancer. Second, owing to a relatively small number of events, inevitable for a prospective study of cancer risk, we could not conclude which pattern, dose–response or threshold pattern, was obeyed by the relationship between methylation level of *miR-124a-3* and cancer risk. However, we found an association of *miR-124a-3* with authentic gastric cancer risk for the Q4 (highest) using Q1 (lowest) or the combination of all the other quartiles (Q1–Q3) as a reference (table 5 and see online supplementary table S1). This finding may support the threshold curve. Since the incidence of a metachronous gastric cancer is stable long after *H. pylori* eradication,^{25 37} further long-term follow-up is expected to strengthen the correlation and clarify an appropriate model of relationship.

From a molecular viewpoint, we tried to measure the accumulation of aberrant methylation in stem cells by analysing gastric

mucosae without *H. pylori* infection, at least 6 months after *H. pylori* eradication. It is known that the methylation level in gastric mucosa decreases after *H. pylori* eradication,^{21–23} and that the persistent methylation level in gastric mucosa without *H. pylori* infection is correlated with gastric cancer risk.^{14 19 24} Since methylation induced in stem cells can only persist for a long time without its inducer, the methylation level in gastric mucosa without *H. pylori* infection could be considered to reflect epigenomic damage accumulated in stem cells. However, we do not have direct evidence to support the hypothesis, because it is still impossible to analyse DNA methylation of specific genes in histological sections. The higher methylation level and smaller HR in patients with *H. pylori* infection before the enrolment (see online supplementary table S3) might have indicated that the methylation levels had not reached baseline after eradication and were superimposed with methylation in progenitor cells.

We analysed three preselected marker genes. Ideal marker genes should be methylated in parallel with overall methylation levels of driver genes in stem cells, but at much higher levels for accurate measurement. *miR-124a-3* is a tumour-suppressor gene (driver gene) with relatively high methylation levels,³¹ and was considered to have met the criteria. Two other genes (*EMX1* and *NKX6-1*) were homeobox genes and considered to be passenger genes. In addition to the analysis using the methylation level of a single gene, we performed an exploratory analysis by combining methylation of three marker genes. Simple addition of the methylation levels of the three genes did not improve the prediction power (data not shown). However, when we scored the number of genes within the Q4 (highest) using the three marker genes, the patients with the highest scores displayed a high HR (95% CI) (2.23 (1.12 to 4.44); $p=0.022$) with a statistically significant trend p of 0.038 using the authentic metachronous gastric cancers. The smaller p value in this combined analysis also supports a threshold model.

In our previous study, we performed biopsies from three positions (antrum, middle body and upper body).¹⁹ It was shown that methylation levels of the three positions were different and that their mean had the highest association with gastric cancer risk. However, patients with a high mean methylation level had higher methylation levels in any of the three positions. In the current study, we performed biopsy from one position, considering the merits (smaller risk of bleeding) and demerits (less precise reflection of the cancer risk) of limiting the positions of biopsy. Since the utility of epigenetic analysis of gastric tissue was demonstrated here, an increase of biopsy positions in future studies may be considered.

In summary, the methylation level of *miR-124a-3* was associated with an increased risk of developing metachronous gastric cancers. Assessment of an epigenetic field defect using methylation levels in normal tissue is a promising biomarker for cancer risk that takes account of life history.

Acknowledgements The authors are grateful to Dr Shigetaka Yoshinaga and Dr Haruhisa Suzuki for patient follow-up and to Eiken for measuring serum pepsinogen levels and serum anti-*H. pylori* antibody levels of all the patients.

Collaborators Shigetaka Yoshinaga; Haruhisa Suzuki.

Contributors TU, TN, MF and MI conceptualised the study. KA, TA and SN performed the experiments. TN, NY, TM, CY, IO, TY, MF, TG and MI followed up the patients endoscopically. TS carried out data analysis. TU and KA wrote the manuscript.

Funding This study was supported by a grant-in-aid for pioneering basic research from the Ministry of Health, Labour (H20-genome-g-006) and Welfare and by a National Cancer Center Research and Development Fund (H23-A-2), Japan.

Competing interests None.

Patient consent Written informed consent was obtained from all the patients.

Ethics approval Study approved by the institutional review board at each hospital.

Provenance and peer review Not commissioned; externally peer reviewed.

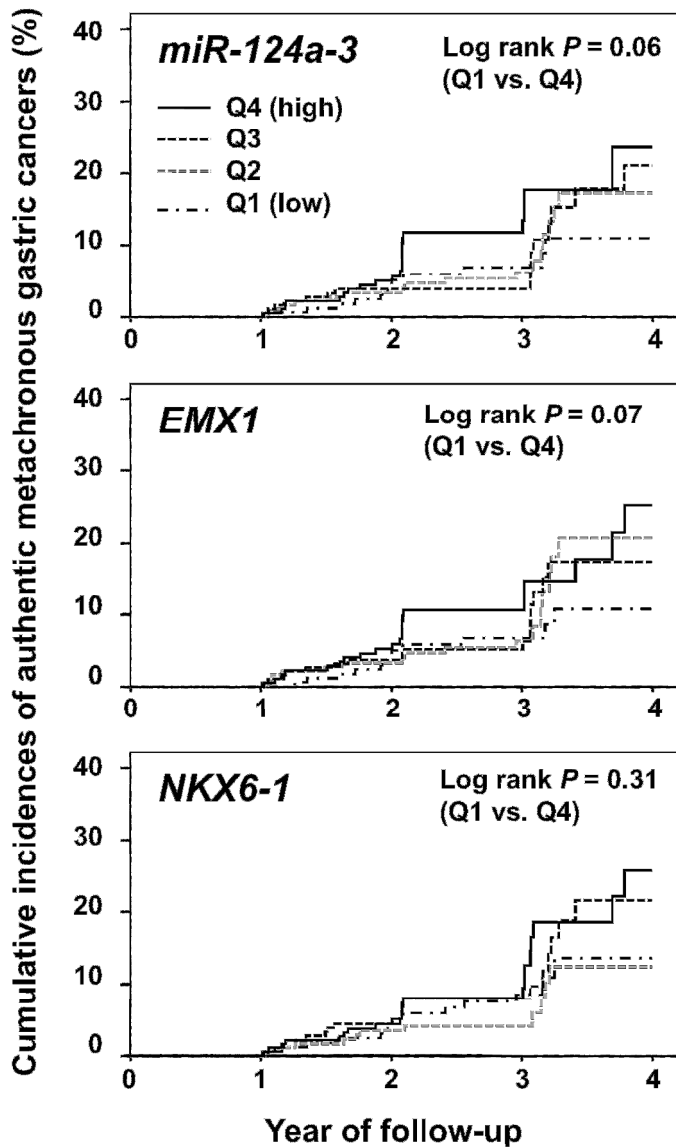
Open Access This is an Open Access article distributed in accordance with the Creative Commons Attribution Non Commercial (CC BY-NC 3.0) license, which permits others to distribute, remix, adapt, build upon this work non-commercially, and license their derivative works on different terms, provided the original work is properly cited and the use is non-commercial. See: <http://creativecommons.org/licenses/by-nc/3.0/>

REFERENCES

- Rodriguez-Paredes M, Esteller M. Cancer epigenetics reaches mainstream oncology. *Nat Med* 2011;17:330–9.
- Baylin SB, Jones PA. A decade of exploring the cancer epigenome—biological and translational implications. *Nat Rev Cancer* 2011;11:726–34.
- Ushijima T. Epigenetic field for cancerization. *J Biochem Mol Biol* 2007;40:142–50.
- Grabsch HI, Tan P. Gastric cancer pathology and underlying molecular mechanisms. *Dig Surg* 2013;30:150–8.
- Kondo Y, Kanai Y, Sakamoto M, et al. Genetic instability and aberrant DNA methylation in chronic hepatitis and cirrhosis—a comprehensive study of loss of heterozygosity and microsatellite instability at 39 loci and DNA hypermethylation on 8 CpG islands in microdissected specimens from patients with hepatocellular carcinoma. *Hepatology* 2000;32:970–9.
- Nishida N, Nagasaka T, Nishimura T, et al. Aberrant methylation of multiple tumor suppressor genes in aging liver, chronic hepatitis, and hepatocellular carcinoma. *Hepatology* 2008;47:908–18.
- Eads CA, Lord RV, Kurumbor SK, et al. Fields of aberrant CpG island hypermethylation in Barrett's esophagus and associated adenocarcinoma. *Cancer Res* 2000;60:5021–6.
- Jin Z, Cheng Y, Gu W, et al. A multicenter, double-blinded validation study of methylation biomarkers for progression prediction in Barrett's esophagus. *Cancer Res* 2009;69:4112–15.
- Cui H, Cruz-Correa M, Giardiello FM, et al. Loss of IGF2 imprinting: a potential marker of colorectal cancer risk. *Science* 2003;299:1753–5.
- Hsieh CJ, Klump B, Holzmann K, et al. Hypermethylation of the p16INK4a promoter in colectomy specimens of patients with long-standing and extensive ulcerative colitis. *Cancer Res* 1998;58:3942–5.
- Issa JP, Ahuja N, Toyota M, et al. Accelerated age-related CpG island methylation in ulcerative colitis. *Cancer Res* 2001;61:3573–7.
- Azuara D, Rodriguez-Moranta F, de Oca J, et al. Novel methylation panel for the early detection of neoplasia in high-risk ulcerative colitis and Crohn's colitis patients. *Inflamm Bowel Dis* 2013;19:165–73.
- Yan PS, Venkataramu C, Ibrahim A, et al. Mapping geographic zones of cancer risk with epigenetic biomarkers in normal breast tissue. *Clin Cancer Res* 2006;12:6626–36.
- Maekita T, Nakazawa K, Mihara M, et al. High levels of aberrant DNA methylation in *Helicobacter pylori*-infected gastric mucosae and its possible association with gastric cancer risk. *Clin Cancer Res* 2006;12:989–95.
- Nishiyama N, Arai E, Chihara Y, et al. Genome-wide DNA methylation profiles in urothelial carcinomas and urothelia at the precancerous stage. *Cancer Sci* 2010;101:231–40.
- Lee YC, Wang HP, Wang CP, et al. Revisit of field cancerization in squamous cell carcinoma of upper aerodigestive tract: better risk assessment with epigenetic markers. *Cancer Prev Res (Phila)* 2011;4:1982–92.
- Shen L, Kondo Y, Rosner GL, et al. MGMT promoter methylation and field defect in sporadic colorectal cancer. *J Natl Cancer Inst* 2005;97:1330–8.
- Kang GH, Lee S, Cho NY, et al. DNA methylation profiles of gastric carcinoma characterized by quantitative DNA methylation analysis. *Lab Invest* 2008;88:161–70.
- Nakajima T, Maekita T, Oda I, et al. Higher methylation levels in gastric mucosae significantly correlate with higher risk of gastric cancers. *Cancer Epidemiol Biomarkers Prev* 2006;15:2317–21.
- Niwa T, Tsukamoto T, Toyoda T, et al. Inflammatory processes triggered by *Helicobacter pylori* infection cause aberrant DNA methylation in gastric epithelial cells. *Cancer Res* 2010;70:1430–40.
- Chan AO, Peng JZ, Lam SK, et al. Eradication of *Helicobacter pylori* infection reverses E-cadherin promoter hypermethylation. *Gut* 2006;55:463–8.
- Perri F, Cotugno R, Piepoli A, et al. Aberrant DNA methylation in non-neoplastic gastric mucosa of *H. pylori* infected patients and effect of eradication. *Am J Gastroenterol* 2007;102:1361–71.
- Nakajima T, Enomoto S, Yamashita S, et al. Persistence of a component of DNA methylation in gastric mucosae after *Helicobacter pylori* eradication. *J Gastroenterol* 2010;45:37–44.
- Shiotani A, Murao T, Uedo N, et al. Eradication of *H. pylori* did not improve abnormal sonic hedgehog expression in the high risk group for gastric cancer. *Dig Dis Sci* 2012;57:643–9.
- Nakajima T, Oda I, Gotoda T, et al. Metachronous gastric cancers after endoscopic resection: how effective is annual endoscopic surveillance? *Gastric Cancer* 2006;9:93–8.
- Fukase K, Kato M, Kikuchi S, et al. Effect of eradication of *Helicobacter pylori* on incidence of metachronous gastric carcinoma after endoscopic resection of early gastric cancer: an open-label, randomised controlled trial. *Lancet* 2008;372:392–7.
- Moertel CG, Barga JA, Soule EH. Multiple gastric cancers; review of the literature and study of 42 cases. *Gastroenterology* 1957;32:1095–103.
- Hosokawa O, Tsuda S, Kidani E, et al. Diagnosis of gastric cancer up to three years after negative upper gastrointestinal endoscopy. *Endoscopy* 1998;30:669–74.
- Voutilainen ME, Juhola MT. Evaluation of the diagnostic accuracy of gastroscopy to detect gastric tumours: clinicopathological features and prognosis of patients with gastric cancer missed on endoscopy. *Eur J Gastroenterol Hepatol* 2005;17:1345–9.
- Kato M, Nishida T, Yamamoto K, et al. Scheduled endoscopic surveillance controls secondary cancer after curative endoscopic resection for early gastric cancer: a multicentre retrospective cohort study by Osaka University ESD study group. *Gut* 2013;62:1425–32.
- Ando T, Yoshida T, Enomoto S, et al. DNA methylation of microRNA genes in gastric mucosae of gastric cancer patients: its possible involvement in the formation of epigenetic field defect. *Int J Cancer* 2009;124:2367–74.
- Nanjo S, Asada K, Yamashita S, et al. Identification of gastric cancer risk markers that are informative in individuals with past *H. pylori* infection. *Gastric Cancer* 2012;15:382–8.
- Takamaru H, Yamamoto E, Suzuki H, et al. Aberrant methylation of RASGRF1 is associated with an epigenetic field defect and increased risk of gastric cancer. *Cancer Prev Res (Phila)* 2012;5:1203–12.
- Shin CM, Kim N, Park JH, et al. Prediction of the risk for gastric cancer using candidate methylation markers in the non-neoplastic gastric mucosae. *J Pathol* 2012;226:654–65.
- Ushijima T, Hattori N. Molecular pathways: involvement of *Helicobacter pylori*-triggered inflammation in the formation of an epigenetic field defect, and its usefulness as cancer risk and exposure markers. *Clin Cancer Res* 2012;18:923–9.
- Gonzalez CA, Agudo A. Carcinogenesis, prevention and early detection of gastric cancer: where we are and where we should go. *Int J Cancer* 2012;130:745–53.
- Maehata Y, Nakamura S, Fujisawa K, et al. Long-term effect of *Helicobacter pylori* eradication on the development of metachronous gastric cancer after endoscopic resection of early gastric cancer. *Gastrointest Endosc* 2012;75:39–46.

Supplementary Figure 1

Cumulative incidence of authentic metachronous gastric cancers for patients in quartile (Q1-Q4) of methylation levels of miR-124a-3, EMX1, and NKX6-1. The Q4 methylation had higher incidences of a metachronous gastric cancer compared with the Q1 methylation with P values of 0.06, 0.07, and 0.31 for miR-124a-3, EMX1, and NKX6-1, respectively, by the log-rank test.



Supplementary Figure 1

Supplementary table 1 Multivariate-adjusted HRs (95%CI) for a metachronous gastric cancer according to DNA methylation levels of the three genes (Q1-Q3 vs Q4)

Variable	Quartile of DNA methylation level	
	Q1-Q3	Q4 (highest)
No. of patients	587	195
<i>Authentic metachronous gastric cancers</i>		
<i>miR-124a-3</i>		
No. of events	44	22
HR* (95% CI)	1	1.95 (1.11-3.43)
<i>P</i> value		0.021
<i>EMX1</i>		
No. of events	45	21
HR* (95% CI)	1	1.50 (0.85-2.62)
<i>P</i> value		0.16
<i>NKX6-1</i>		
No. of events	45	21
HR* (95% CI)	1	1.42 (0.82-2.45)
<i>P</i> value		0.21
<i>All metachronous gastric cancers</i>		
<i>miR-124a-3</i>		
No. of events	57	24
HR* (95% CI)	1	1.62 (0.96-2.74)
<i>P</i> value		0.072
<i>EMX1</i>		
No. of events	55	26
HR* (95% CI)	1	1.52 (0.92-2.52)
<i>P</i> value		0.10
<i>NKX6-1</i>		
No. of events	58	23
HR* (95% CI)	1	1.25 (0.75-2.08)
<i>P</i> value		0.39

*Adjusted for hospital, gender, and age (<50, 50-59, 60-69, or ≥70), *H. pylori* infection before the enrollment (positive or negative), pepsinogen index, past history of endoscopic resection (0, 1, 2, or 3 times), pack-years of smoking (0, 1-39, or ≥40), and green vegetable intake (≤2 days per week, 3-4 days per week, or almost daily).

Supplementary table 2 Difference in methylation levels of three genes between patients with and without *H. pylori* infection before the enrollment

Variable	Median DNA methylation level					
	<i>miR-124a-3</i>	<i>P</i> for the difference*	<i>EMX1</i>	<i>P</i> for the difference*	<i>NKX6-1</i>	<i>P</i> for the difference*
<i>H. pylori</i> infection before the enrollment						
Negative (n=385)	68.6	<0.0001	62.1	0.0040	68.5	<0.0001
Positive (n=397)	78.1		72.0		74.2	

*Wilcoxon rank sum test

Supplementary table 3 Analysis stratified by *H. pylori* infection status before the enrollment for the risk of authentic metachronous gastric cancer according to *miR-124a-3* methylation level

Variable	Quartile of <i>miR-124a-3</i> methylation level				<i>P</i> for trend
	Q1 (lowest)	Q2	Q3	Q4 (highest)	
<i>H. pylori</i> infection before the enrollment					
Negative					
No. of events	7	13	10	11	
HR* (95% CI)	1	1.70 (0.61-4.71)	1.38 (0.48-3.95)	2.43 (0.81-7.32)	0.19
Positive					
No. of events	5	4	5	11	
HR* (95% CI)	1	0.36 (0.08-1.69)	0.73 (0.17-3.06)	1.32 (0.37-4.77)	0.29

*Adjusted for center by stratification, gender, age (40-49, 50-59, 60-69, or ≥ 70), pepsinogen index, and past history of endoscopic resection (0, 1, 2, or 3 times), pack-years of smoking (0, 1-19, 20-39, or ≥ 40), and green vegetable intake (≤ 2 days per week, 3-4 days per week, or almost daily).

Supplementary table 4 Analysis stratified by the past history of ER and the years since the first ER to enrollment for the risk of authentic metachronous gastric cancer according to *miR-124a-3* methylation level

Variable	Quartile of <i>miR-124a-3</i> methylation level				P for trend
	Q1 (lowest)	Q2	Q3	Q4 (highest)	
<i>Past history of ER</i>					
<2 times					
No. of events	8	15	14	19	
HR* (95% CI)	1	1.89 (0.78-4.61)	1.47 (0.59-3.66)	2.55 (1.02-6.33)	0.09
≥2 times					
No. of events	4	2	1	3	
HR† (95% CI)	1	0.18 (0.002-18)	3.69 (0.02-731)	3.67 (0.02-712)	0.15
<i>Years since the first ER</i>					
> 5 years					
No. of events	4	4	5	9	
HR‡ (95% CI)	1	0.38 (0.08-1.83)	0.80 (0.20-3.22)	1.45 (0.36-5.86)	0.30
≤ 5 years					
No. of events	8	13	10	13	
HR‡ (95% CI)	1	1.77 (0.68-4.68)	1.51 (0.52-4.38)	2.48 (0.86-7.11)	0.14

* Adjusted for center by stratification, gender, age (40-49, 50-59, 60-69, or ≥70), *H. pylori* infection before the enrollment (positive or negative), pepsinogen index, and past history of endoscopic resection (0 or 1 time), pack-years of smoking (0, 1-19, 20-39, or ≥40), and green vegetable intake (≤2 days per week, 3-4 days per week, or almost daily)

† Adjusted for center by stratification, gender, age (40-49, 50-59, 60-69, or ≥70), *H. pylori* infection before the enrollment (positive or negative), pepsinogen index, and past history of endoscopic resection (2 or 3 times), pack-years of smoking (0, 1-19, 20-39, or ≥40), and green vegetable intake (≤2 days per week, 3-4 days per week, or almost daily)

‡ Adjusted for center by stratification, gender, age (40-49, 50-59, 60-69, or ≥70), *H. pylori* infection before the enrollment (positive or negative), pepsinogen index, and past history of endoscopic resection (0, 1, 2, or 3 times), pack-years of smoking (0, 1-19, 20-39, or ≥40), and green vegetable intake (≤2 days per week, 3-4 days per week, or almost daily).

Supplementary table 5 Years since the first ER to the enrollment according to quartiles of DNA methylation levels of three marker genes

Variable	Quartile of DNA methylation level			
	Q1 (lowest)	Q2	Q3	Q4 (highest)
<i>Years since the first ER, median (IQR)</i>				
<i>miR-124a-3</i>	2.6 (1.2-4.9)	2.1 (1.0-4.7)	2.7 (1.0-5.1)	2.9 (1.0-4.9)
<i>EMX1</i>	2.9 (1.2-5.0)	2.0 (1.0-4.3)	3.2 (1.0-5.3)	2.2 (0.8-4.6)
<i>NKX6-1</i>	2.5 (1.1-4.8)	2.7 (1.0-5.0)	2.3 (0.7-4.7)	2.9 (1.0-5.0)

IQR, interquartile range