



Editor's choice
Scan to access more
free content

ORIGINAL ARTICLE

Akkermansia muciniphila and improved metabolic health during a dietary intervention in obesity: relationship with gut microbiome richness and ecology

Maria Carlota Dao,^{1,2,3} Amandine Everard,⁴ Judith Aron-Wisnewsky,^{1,2,3} Nataliya Sokolovska,^{1,2,3} Edi Prifti,¹ Eric O Verger,^{1,2,3} Brandon D Kayser,¹ Florence Levenez,^{5,6} Julien Chilloux,⁷ Lesley Hoyles,⁷ MICRO-Obes Consortium, Marc-Emmanuel Dumas,⁷ Salwa W Rizkalla,¹ Joel Doré,^{5,6} Patrice D Cani,⁴ Karine Clément^{1,2,3}

► Additional material is published online only. To view please visit the journal online (<http://dx.doi.org/10.1136/gutjnl-2014-308778>).

For numbered affiliations see end of article.

Correspondence to

Professor Karine Clément, Institute of Cardiometabolism and Nutrition (ICAN), Institut E3M, 83 boulevard de l'Hôpital, Bureau 616, 75013 Paris, France; ican-kclement@ican-institute.org

Received 4 November 2014
Revised 30 April 2015
Accepted 1 May 2015
Published Online First
22 June 2015

ABSTRACT

Objective Individuals with obesity and type 2 diabetes differ from lean and healthy individuals in their abundance of certain gut microbial species and microbial gene richness. Abundance of *Akkermansia muciniphila*, a mucin-degrading bacterium, has been inversely associated with body fat mass and glucose intolerance in mice, but more evidence is needed in humans. The impact of diet and weight loss on this bacterial species is unknown. Our objective was to evaluate the association between faecal *A. muciniphila* abundance, faecal microbiome gene richness, diet, host characteristics, and their changes after calorie restriction (CR).

Design The intervention consisted of a 6-week CR period followed by a 6-week weight stabilisation diet in overweight and obese adults (N=49, including 41 women). Faecal *A. muciniphila* abundance, faecal microbial gene richness, diet and biochemical parameters were measured at baseline and after CR and weight stabilisation.

Results At baseline *A. muciniphila* was inversely related to fasting glucose, waist-to-hip ratio and subcutaneous adipocyte diameter. Subjects with higher gene richness and *A. muciniphila* abundance exhibited the healthiest metabolic status, particularly in fasting plasma glucose, plasma triglycerides and body fat distribution. Individuals with higher baseline *A. muciniphila* displayed greater improvement in insulin sensitivity markers and other clinical parameters after CR. These participants also experienced a reduction in *A. muciniphila* abundance, but it remained significantly higher than in individuals with lower baseline abundance. *A. muciniphila* was associated with microbial species known to be related to health.

Conclusions *A. muciniphila* is associated with a healthier metabolic status and better clinical outcomes after CR in overweight/obese adults. The interaction between gut microbiota ecology and *A. muciniphila* warrants further investigation.

Trial registration number NCT01314690.

Significance of this study

What is already known on this subject?

- Evidence suggests that gut microbiota diversity and metabolic function play an important role in the development of obesity and related metabolic disorders.
- Dietary changes including calorie restriction can profoundly impact the gut microbiota.
- *Akkermansia muciniphila* is associated with healthier glucose metabolism and leanness in mice but this is less conclusive in humans.

What are the new findings?

- Higher *A. muciniphila* abundance is associated with a healthier metabolic status in overweight/obese humans.
- There is an interaction between gut microbiome richness, certain metagenomic species and *A. muciniphila*, whereby higher abundance of this species together with greater microbial gene richness are associated with a healthier metabolic status.
- Higher abundance of *A. muciniphila* at baseline is associated with greater improvement in glucose homeostasis, blood lipids and body composition after calorie restriction.

How might it impact on clinical practice in the foreseeable future?

- Our findings demonstrate the need for further investigation to ascertain the therapeutic applicability of *A. muciniphila* in the treatment of insulin resistance.
- *A. muciniphila* may be identified as a diagnostic or prognostic tool to predict the potential success of dietary interventions.



CrossMark

To cite: Dao MC, Everard A, Aron-Wisnewsky J, et al. *Gut* 2016;**65**:426–436.

INTRODUCTION

Altered gut microbiota composition and function contribute to the development of obesity in mice and its associated comorbidities in mice and humans.^{1–5}

There is increasing evidence showing interactions between environmental factors, gut microbiota, metabolic diseases and cardiovascular risks.^{5–7} Specific bacterial groups have been implicated in

obesity and related metabolic diseases, and may therefore be considered as therapeutic targets. As such, *Akkermansia muciniphila*, a mucin-degrading bacterium, was proposed to be a contributor to the maintenance of gut health^{8–10} and glucose homeostasis.¹¹ We, and others, have shown in mouse studies a causative role for this species in lowering body fat mass, improving glucose homeostasis, decreasing adipose tissue inflammation and increasing gut integrity.^{12–14} The latter was demonstrated following oral administration of *A. muciniphila* that led to increased mucin layer thickness, decreased metabolic endotoxaemia¹² and increased number of goblet cells.¹³

In humans, the role of *A. muciniphila* remains ambiguous. One study reported that *A. muciniphila* was more abundant in subjects with normal glucose tolerance compared with a prediabetic group.¹⁵ The opposite relationship was seen by others, where *A. muciniphila* was enriched in patients with type 2 diabetes (T2D) compared with non-diabetic controls.¹⁶ These two studies were conducted in lean/overweight Chinese adult populations with a wide age range. A third study in normal weight 70-year-old European women showed that *A. muciniphila* was not among the species applicable to classify women as having T2D.¹⁷ This discrepancy may be due to differences in study design, methodology and population characteristics such as ethnicity, age and diet.¹⁸

Studying changes in *A. muciniphila* after an intervention known for improving metabolic health offers stronger evidence of its role than measuring cross-sectional relationships. Weight loss through calorie restriction (CR) or bariatric surgery has a profound effect on gut microbiota.^{19–20} Characteristics of the gut ecosystem, such as high microbial gene richness, have been associated with better cardiometabolic health and improvements in clinical characteristics after a diet-induced weight loss intervention.^{21–22} Limited available evidence suggests that *A. muciniphila* increases with bariatric surgery in humans and mice,^{23–26} but there is no evidence on the effects of CR.

We have previously published results from this dietary intervention,^{21–27} where overweight and obese individuals underwent weight loss through CR followed by weight stabilisation (WS). In the same cohort, we herein aim to evaluate the potential associations between *A. muciniphila* with microbial gene richness, diet, host anthropometric and metabolic parameters, and further address their changes after the intervention.

MATERIALS AND METHODS

Study population

This dietary intervention was conducted at the Institute of Cardiometabolism and Nutrition, Pitié-Salpêtrière Hospital in Paris, France. The 49 participants were overweight (N=11) or obese (N=38) (male:female=8:41), and have been previously described in detail.^{21–27} A smaller sample size has been specified when there is missing data. Briefly, subjects had no diabetes, chronic or inflammatory diseases. No antibiotics were taken for 2 months before stool collection. Details of the dietary intervention, which consisted of a 6-week CR diet enriched with fibres and protein followed by a 6-week WS period have been previously described.²⁷

Body composition and biochemical parameters

Anthropometric measurements included body mass index (BMI), waist and hip circumference and waist-to-hip ratio. Total body fat, fat-free mass, gynoid and android fat proportions were determined using dual energy X-ray absorptiometry, as previously described.²⁸

Blood samples were collected after a 12-h fast at baseline, week 6 and week 12. Measurements included blood lipids, namely non-esterified fatty acids (NEFA), triglycerides (TGs), total cholesterol (TC), low density lipoprotein (LDL), cholesterol and high density lipoprotein (HDL). Inflammatory and endotoxaemia markers included high sensitivity C reactive protein, interleukin 6 (IL-6)²⁹ and lipopolysaccharide,³⁰ as described previously.²⁷ Aspartate transaminase, alanine transaminase and γ -glutamyl transpeptidase were measured as part of a clinical blood panel (laboratory-established normal ranges: 20–32 IU/L, 20–35 IU/L and 8–36 IU/L, respectively).

The Homeostasis Model Assessment of Insulin Resistance Index (HOMA-IR) was calculated using the HOMA2Calculator developed by Levy *et al*,³¹ which uses mathematical modelling and a healthy reference population to determine insulin sensitivity. Glucose and insulin area under the curve (AUC) from the oral glucose tolerance test (OGTT) were calculated, and the Disse index³² was derived using the formula:

$$\text{Disse} = 12 \times \left[2.5 \times \left(\frac{\text{HDL}}{\text{Total Chol}} \right) - \text{NEFA} \right] - \text{insulin}$$

Adipocyte morphology and adipose tissue macrophages

Subcutaneous white adipose tissue (scWAT) samples were obtained at baseline, week 6 and week 12 by needle biopsy from the periumbilical region under local anaesthesia.³³ Adipocyte diameter was quantified as previously described.³⁴ Adipocyte morphology in relation to fat mass was measured using the curve fitting model developed by Spalding *et al* to describe associations between adipocyte volume, number and body fat.^{35–36} The formula with re-estimated parameters is:

$$\begin{aligned} \text{Theoretical Adipocyte volume (pl)} \\ = \frac{(40.7 \times \text{kg Fat Mass})}{(1 + (0.025 \times \text{kg Fat Mass}))} \end{aligned}$$

Observed adipocyte volume³⁷ was calculated with the formula:

$$\begin{aligned} \text{Observed Adipocyte volume (pl)} \\ = \left[\left(\frac{\pi}{6 \times 10^3} \right) \times (\text{Adipocyte Diameter, } \mu\text{m})^3 \right] \end{aligned}$$

HAM56 was measured as a marker of scWAT macrophages with monoclonal antibody (DakoCytomation). HAM56 positive cells were quantified as a percentage of total adipocyte number.³⁸

Metabolic phenotyping of serum by ¹H NMR spectroscopy

Serum samples were prepared and analysed on a nuclear magnetic resonance (NMR) spectrometer (Bruker) operating at 600.22 MHz ¹H frequency as previously described,³⁹ using 350 μ L of sample mixed with 350 μ L of buffer before centrifugation at 12000 g at 4°C for 5 min. The ¹H NMR spectra were preprocessed and metabolic signals were recovered using statistical recoupling of variables.⁴⁰

Faecal microbiota

A quantitative metagenomics (QM) approach was used to characterise the faecal microbiota with high resolution. Briefly, high-throughput SOLiD sequencing was performed on total faecal DNA as described in Cotillard *et al*.²¹ Reads were mapped and counted onto the 3.9 million gene catalogue,⁴¹ after cleaning for quality, human, plant and cow origin using the Meteor

Studio platform. The metagenomic species (MGS) catalogue published by Nielsen *et al* was used to cluster gene profiles in the current study. We used the Le Chatelier *et al*²² methodology implemented in the MetaOMineR pipeline to compute MGS tracer profiles, where we calculated the mean of the 50 most correlated bacterial genes after filtering at 20% presence and used only large MGS with more than 500 genes to focus on potential bacterial species. The taxonomic annotation is an updated version of the published data set. The methodology for stratification as a function of gene richness (low gene count, LGC and high gene count, HGC) was as formerly described and is based on the first metagenomics catalogue.^{21 22}

A. muciniphila quantification

A. muciniphila was quantified with qPCR as described in Everard *et al*.¹² Briefly, DNA was extracted from faecal samples,²⁷ and qPCR (Applied Biosystems) was done using the 16S rRNA primers for *A. muciniphila* detection and amplification: forward CAGCACGTGAAGGTGGGAC and reverse CCTTGC GGTTG GCTTCAGAT. Total 16S rRNA was also quantified and used to normalise *A. muciniphila* using bacterial universal primers: forward ACTCCTACGGGAGGCAGCAG and reverse ATTACCGCGGCTGCTGG. Each assay was performed in duplicate. The cycle threshold of each sample was then compared with a standard curve (performed in triplicate) made by diluting genomic DNA (fivefold serial dilution) (DSMZ, Braunschweig, Germany).

A. muciniphila was also quantified using QM (GU:154), as some of the analysis included direct comparisons between qPCR and QM data, and good agreement was found between the two methods (see online supplementary figures S1 and S2).

Diet mean adequacy ratio

Diet was assessed with 7-day unweighted food records completed just before baseline, week 6 and week 12, as previously described.³⁴ We used the mean adequacy ratio (MAR) as an indicator of global nutrient adequacy of the diet.^{42 43} The MAR is the mean nutrient adequacy ratio (NAR) for 16 nutrients (proteins, fibre, retinol equivalents, thiamine, riboflavin, niacin, vitamin B6, folates, vitamin B12, ascorbic acid, vitamin D, vitamin E, calcium, potassium, iron and magnesium). Each NAR was calculated as the mean intake of a nutrient divided by the French Recommended Dietary Allowance⁴⁴ and multiplied by 100. To avoid compensation of high intake of one nutrient for low intake of another, each NAR was truncated at 100. The MAR ranges from 0 to 100; the higher the score, the better the global nutrient adequacy of the diet.

Bayesian network

A Bayesian network was constructed in order to simultaneously study associations between relevant variables and *A. muciniphila* qPCR abundance. Bayesian networks are probabilistic graphical models used to represent complex associations. The variables are the vertices in the graph, and the edges are the direct dependencies between them. We applied the Hill Climbing algorithm, which belongs to a family of local search techniques that performs a heuristic search based on scoring metrics. The Bayesian Information Criterion was used as a scoring function. These procedures were conducted using the bnlearn R package, V3.6.⁴⁵

Statistical analysis

Normally distributed data were analysed using parametrical tests (paired t test and analysis of covariance (ANCOVA) with age

and sex as covariates). For variables with a skewed distribution or when conducting analysis of groups with small sample size (ie, categorization by lower/higher *A. muciniphila* abundance and low/high gene richness: Akk LO/HI by LGC/HGC, see results section) non-parametrical tests were conducted (Wilcoxon rank sum test or Kruskal-Wallis followed by multiple signed rank sum tests for individual comparisons with Bonferroni correction). Spearman analysis was used to determine correlation between variables. Values in tables are reported as mean (SE), or adjusted mean (SE) in the case of ANCOVA. In figures data are reported as box plots or as means or adjusted means±SE. Statistical significance was set as $\alpha=0.05$, except in post hoc analysis with Bonferroni correction. OGTT curve analysis was done using repeated measures analysis of variance (ANOVA). Microbiome analyses were performed using the MetaOMineR package (Prifti and Le Chatelier, in preparation). SAS V.9.3 for Windows (SAS Institute, Cary, North Carolina, USA) and R were used for all statistical analyses.

RESULTS

Baseline comparison between Akk LO and Akk HI groups

A. muciniphila is associated with a healthier metabolic status

The log₁₀ transformed *A. muciniphila* was normalised to log₁₀ total bacterial content and we refer to this measurement as *A. muciniphila*. There was no difference in faecal *A. muciniphila* abundance between overweight and obese subjects (-2.57 ± 2.18 and -2.38 ± 1.72 , $p=0.97$, respectively). *A. muciniphila* abundance had a bimodal distribution, consistent with that seen in QM (see online supplementary figure S1). Therefore, baseline *A. muciniphila* abundance was categorised around the baseline median and groups were defined as having lower abundance (Akk LO, abundance<median, N=24) or higher abundance (Akk HI, abundance≥median, N=25). Sex and average age did not differ between Akk LO and Akk HI groups (table 1). However, there was a higher number of younger subjects (age ≤median, N=17) in the Akk HI group than older subjects (age >median, N=8). Further analyses were subsequently adjusted by age and sex.

Subjects in the Akk HI group had a healthier metabolic status, as shown by a lower waist-to-hip ratio, leptin and surrogates of insulin sensitivity (table 1). The Akk HI group had lower fasting blood glucose and insulin. Fasting blood glucose was inversely associated with *A. muciniphila* (see online supplementary figure S3). HOMA-IR and Disse index suggested higher insulin sensitivity in the Akk HI group compared with the Akk LO group (table 1 and figure 1A). Furthermore, there was an inverse association between glucose AUC during OGTT and *A. muciniphila* abundance (figure 1C). Glycaemia at T15 and glycaemia at T60 were significantly higher in the Akk LO group. Aspartate transaminase and γ -glutamyl transpeptidase were lower in the Akk HI group and average values were in the normal range while they were elevated in Akk LO patients (table 1).

A. muciniphila is inversely associated with adipocyte size

ScWAT adipocyte diameter, but not total fat mass, was inversely associated with *A. muciniphila* abundance (figure 2A, B), and Akk HI had lower mean adipocyte size (table 1). When fitting the formula developed by Spalding *et al*³⁵ to describe the association between adipocyte volume and fat mass the Akk HI group tended to fall below the theoretical curve (figure 2C) as quantified in a residual plot (figure 2D), suggesting increased adipocyte hyperplasia in Akk HI subjects.

Table 1 Comparison between clinical variables categorised into *Akkermansia muciniphila* abundance groups

		Akk LO (N=24)	Akk HI (N=25)	p Value
Sex, N (%)	F	19 (79.2)	22 (88.0)	0.4
	M	5 (20.8)	3 (12.0)	
Age (years)		45 (12)	39 (12)	0.18
Age categorisation around the median, N (%)	Age LO (\leq 49 years)	8 (32.0)	17 (68.0)	0.02
	Age HI ($>$ 49 years)	16 (66.7)	8 (33.3)	
<i>Body composition</i>				
BMI (kg/m ²)		33.0 (0.9)	32.5 (1.0)	0.63
Waist circumference (cm)		108.8 (2.2)	105.7 (2.3)	0.27
Hip circumference (cm)		113.4 (2.0)	115.0 (2.1)	0.51
Waist-to-hip ratio		0.96 (0.01)	0.92 (0.02)	0.04
Fat mass (%)		35.6 (1.0)	34.2 (1.1)	0.30
Lean mass (%)		61.5 (1.0)	62.7 (1.1)	0.33
% of android fat (DXA)		61.1 (1.3)	59.5 (1.4)	0.33
% of gynoid fat (DXA)		36.3 (1.3)	37.6 (1.4)	0.42
Adipocyte diameter (μ m)		111.5 (1.6)	104.8 (1.8)	0.002
<i>Glucose homeostasis</i>				
Glucose (mmol/L)		5.4 (0.1)	5.2 (0.1)	0.02
Insulin (μ U/mL)		11.3 (0.9)	8.9 (0.9)	0.03
HOMA-IR		1.5 (0.1)	1.2 (0.1)	0.03
Disse index		-9.2 (1.0)	-6.0 (1.1)	0.02
Alanine transaminase (ALT) (IU/L)		38.2 (3.3)	31.5 (3.5)	0.11
<i>Liver enzymes</i>				
Aspartate transaminase (AST) (IU/L)		39.5 (3.7)	29.0 (3.9)	0.03
γ -glutamyl transpeptidase (GGT) (IU/L)		57.0 (5.6)	35.3 (6.0)	0.004
<i>Blood lipids</i>				
LDL-c (mmol/L)		3.4 (0.2)	3.3 (0.2)	0.66
Triglycerides (mmol/L)		1.2 (0.9-1.7)	1.0 (0.8-1.2)	0.08
Non-esterified fatty acids (mmol/L)		0.42 (0.04)	0.41 (0.04)	0.76
<i>Systemic inflammation</i>				
hs CRP (mg/L)		4.6 (1.7-7.2)	2.4 (0.9-6.9)	0.11
IL-6 (pg/mL)		1.3 (0.7-2.9)	1.6 (1.1-2.3)	0.93
LPS (pg/mL)		1.7 (1.2-2.7)	2.1 (1.2-2.9)	0.80
<i>scWAT macrophage markers</i>				
HAM56 (%)		13.6 (8.2-22.9)	10.0 (6.5-17.5)	0.18
%HAM56/adipocyte diameter		0.13 (0.02)	0.10 (0.02)	0.23
<i>Adipokines</i>				
Leptin (ng/mL)		44.1 (3.6)	30.9 (3.9)	0.005
Adiponectin (μ g/mL)		15.1 (5.9-20.0)	14.7 (11.5-17.4)	0.77

For variables with a skewed distribution (triglycerides, CRP, IL-6, LPS, %HAM56 and adiponectin): Wilcoxon rank sum test, median (Q1-Q3) shown. For other variables: ANCOVA adjusting for age and sex, adjusted mean (SE) shown.

Numbers in bold indicate significance at the 0.05 level.

Age LO, age below population median; Age HI, age at or above the population median; Akk LO, *A. muciniphila* below the median; Akk HI, *A. muciniphila* at or above the median; DXA, dual energy X-ray absorptiometry; HOMA-IR, Homeostasis Model Assessment of Insulin Resistance Index; hs CRP, high sensitivity C reactive protein; LPS, lipopolysaccharide; scWAT, subcutaneous white adipose tissue.

Signature associated with *A. muciniphila* abundance

To study associations between relevant variables simultaneously at baseline, and examine the strongest associations with *A. muciniphila* abundance, a Bayesian network was built (figure 1B). Corroborating the observations from the univariate analysis, the clinical factors most dependent (d) with baseline *A. muciniphila* abundance are fasting glucose (d=0.86), HOMA-IR (d=0.66) and mean adipocyte diameter (d=0.84).

Changes with CR intervention

The Akk HI group had greatest benefits from the dietary intervention

There was no difference in weight loss between the Akk HI and Akk LO groups (data not shown). While there was a decrease in *A. muciniphila* abundance in the Akk HI group after CR and the total intervention period, it remained consistently and significantly higher than the Akk LO group (more than 100 times

difference, figure 3A and see online supplementary figure S2), although the range of abundance became more spread out after CR and WS in both groups (see online supplementary figure 4A). The change in *A. muciniphila* abundance was different between the two groups after CR and the 12-week period (figure 3B). The Akk HI group remained metabolically healthier throughout the dietary intervention, with a tendency for a higher Disse index after CR and WS (figure 4A, E), a greater improvement of total and LDL cholesterol after CR and total intervention period (figure 4C, D and G, H), and a continued decrease in waist circumference (WC) during the WS period (figure 4B, F).

Serum acetate correlates with *A. muciniphila* at baseline

A. muciniphila is a producer of short chain fatty acids (SCFA), primarily acetate and propionate.^{46 47} The latter is not usually detectable in serum by ¹H NMR spectroscopy, but serum acetate

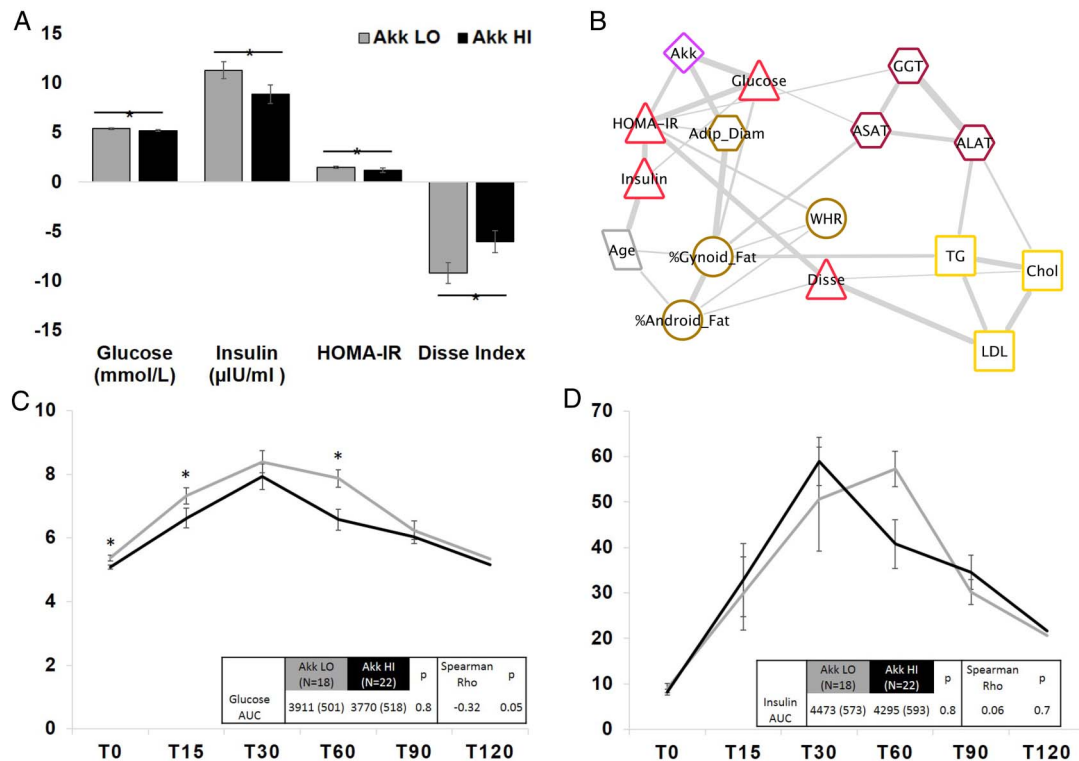


Figure 1 Association between *Akkermansia muciniphila* abundance and markers of insulin sensitivity. (A) Comparison of fasting glucose, insulin, HOMA-IR and Disse index between Akk LO and Akk HI groups. (B) Bayesian network showing the dependencies between variables selected based on their association with *A. muciniphila*. The thickness of the edges connecting the vertices (variables) represents the weight of dependencies between variables. Akk, *A. muciniphila*; WHR, waist-to-hip ratio; Adip_Diam, adipocyte diameter; TG, triglycerides; Chol, total cholesterol; HOMA-IR, Homeostasis Model Assessment of Insulin Resistance Index; Disse, Disse index; AST, aspartate transaminase; ALT, alanine transaminase; GGT, γ -glutamyl transpeptidase. (C and D) Oral glucose tolerance test (OGTT) glucose and insulin curves, respectively (included times: 0 min, 15 min, 30 min, 60 min, 90 min and 120 min), with comparison in glucose AUC between Akk LO (N=18) and Akk HI (N=22) by ANCOVA adjusting for age and sex. Spearman correlation between glucose or insulin AUC and *A. muciniphila* abundance is shown. Akk LO, *A. muciniphila* below the median; Akk HI, *A. muciniphila* at or above the median.

was positively correlated with *A. muciniphila* abundance (figure 5A). There was a reduction in serum acetate throughout the dietary intervention in the total population as well as the Akk LO and Akk HI groups. Although it remained higher in Akk HI group, change in serum acetate concentrations was not different between groups (figure 5B, C).

A. muciniphila and the microbial ecosystem

It is likely that the association between faecal microbiota and health indicators is not attributable to a single microbe, but rather to an ecosystem that influences the complicated interaction between host biology and environment. As such, we studied *A. muciniphila* abundance in relation to the microbiome-wide MGS abundance and microbial gene richness.

A. muciniphila and MGS abundance

There were 27 large MGS (>500 genes) associated with *A. muciniphila* abundance throughout the intervention ($p < 0.01$), including the *A. muciniphila* MGS, 13 Firmicutes, 5 Bacteroidetes, 1 Actinobacteria and 1 Euryarchaeota (figure 6A). Nineteen of these MGS (70%) were more abundant in the Akk HI group. Some of the 26 MGS remained associated with *A. muciniphila* abundance throughout the intervention, while for others this association was lost at week 6, or lost and then regained at week 12. These 26 MGS represented less than 20% of the microbiome at all times when considering the large MGS as a reference (figure 6B).

Individuals with higher *A. muciniphila* and gene richness have healthiest metabolic profile

We previously reported that high faecal gene richness was associated with healthier baseline metabolic status and with better outcomes from the dietary intervention.²¹ We therefore studied the relationship between *A. muciniphila* abundance and bioclinical parameters in the context of gene richness, leading to the definition of four groups: Akk LO, LGC; Akk HI, LGC; Akk LO, HGC; and Akk HI, HGC. The Akk HI, HGC group had the best metabolic status with the lowest median per cent android fat, fasting glucose and TGs, and the highest median per cent gynoid fat (figure 7A–D). Most importantly, after the CR and WS phases, this group remained metabolically healthier (see online supplementary figure S5). Linear regression analysis showed that the interaction term had the largest effect size for body fat distribution and TGs, while Akk LO/HI had the biggest effect size for glucose (see online supplementary table S1).

A. muciniphila and dietary intake

At baseline, dietary intake did not greatly differ between the Akk LO and Akk HI groups. However, age was identified as a confounder for diet, with older subjects having a healthier diet than younger subjects, that is, higher consumption of dairy products, fruits and vegetables and fish, and lower consumption of sugary drinks.⁴⁸ There were no significant differences in the 16 NARs and the MAR between the Akk LO and Akk HI groups (figure 8A and see online supplementary table S2), but older

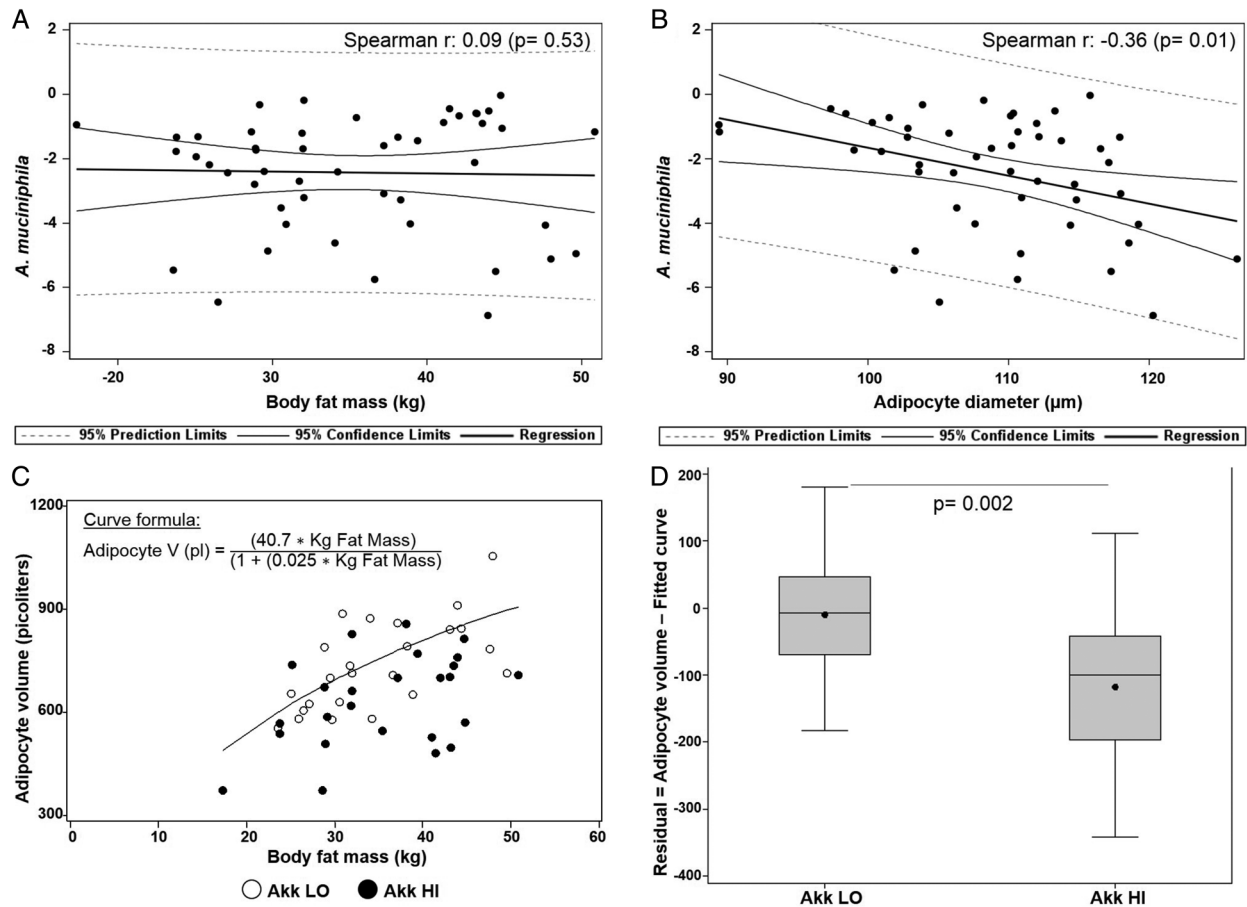


Figure 2 Relationship between adipocyte volume and body fat mass according to *Akkermansia muciniphila* groups. (A) Spearman correlation between *A. muciniphila* and kg fat mass. (B) Spearman correlation between *A. muciniphila* and adipocyte diameter. (C) Association between adipocyte volume and body fat mass in relation to fitted curve, with black circles representing the Akk HI group and white circles the Akk LO group. (D) Residuals of data points in part C. Akk LO, *A. muciniphila* below the median; Akk HI, *A. muciniphila* at or above the median.

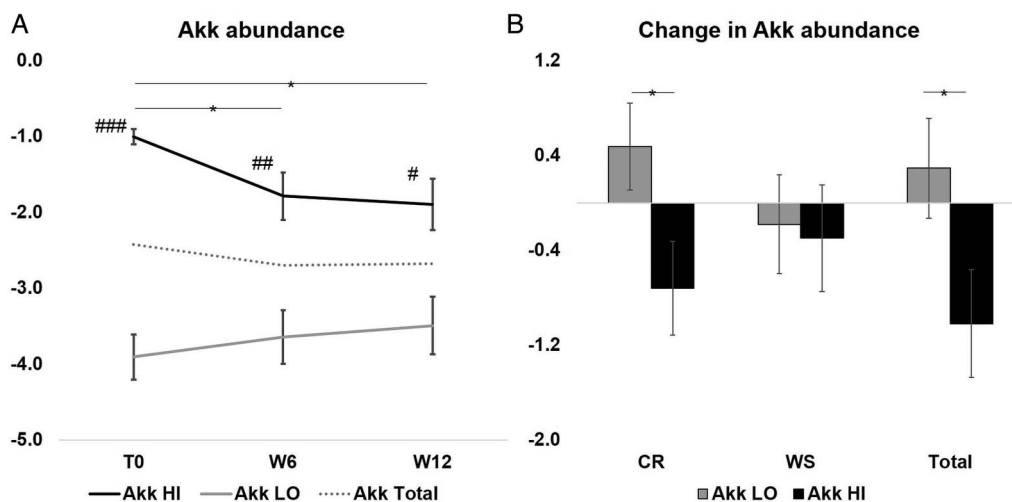


Figure 3 Changes in *Akkermansia muciniphila* abundance with dietary intervention. (A) Paired *t* test was used to measure the within-group change in *A. muciniphila* abundance, mean (SE) is shown; **p*<0.05 with paired *t* test; #*p*<0.01, ##*p*<0.001 and ###*p*≤0.0001 with *t* test between Akk LO and Akk HI at each time point. (B) ANCOVA adjusting for age and sex was used to compare the change between Akk LO and Akk HI groups, adjusted mean change (SE) is shown; *p*<0.05. CR, calorie restriction; WS, weight stabilisation; Akk LO, *A. muciniphila* below the median; Akk HI, *A. muciniphila* at or above the median.

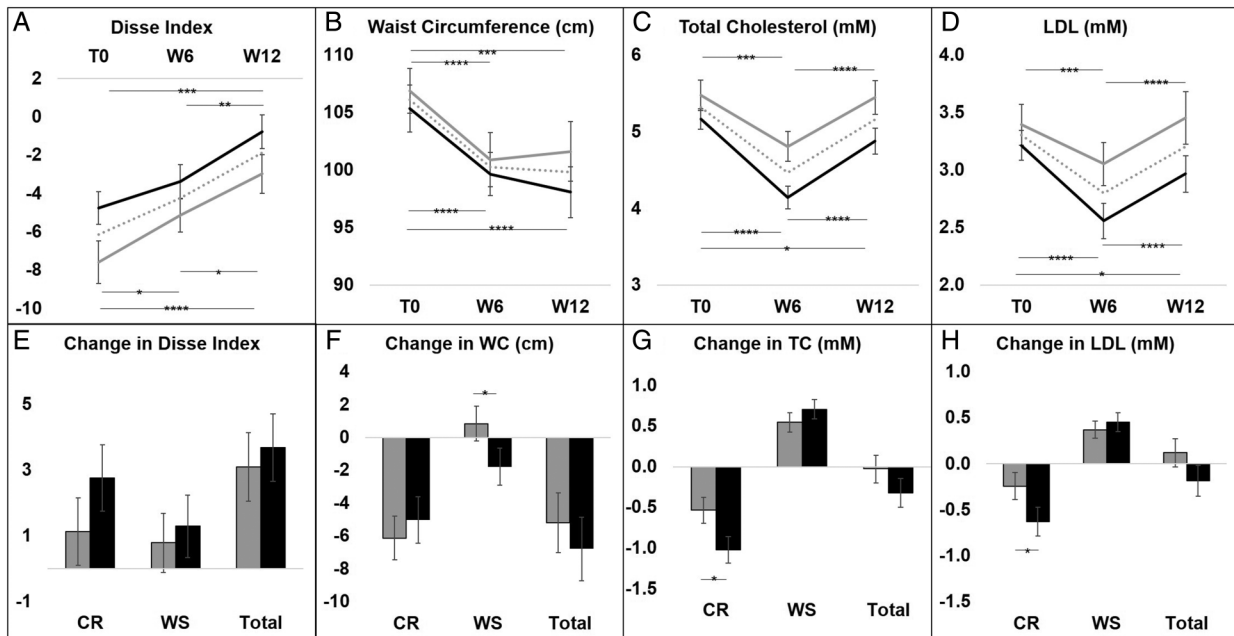


Figure 4 Comparing the effect of dietary intervention on bioclinical parameters between *Akkermansia muciniphila* groups. (A–D) Paired t test was used to measure the within-group change in Disse index (A), waist circumference (B), and total and LDL cholesterol (C and D); mean (SE) is shown. (E–H) ANCOVA adjusting for sex, age and baseline value was used to compare the change between Akk LO and Akk HI groups in Disse index (E), waist circumference (F), and total and LDL cholesterol (G,H); adjusted mean change (SE) is shown. * $p \leq 0.05$; ** $p \leq 0.01$; *** $p \leq 0.001$; **** $p \leq 0.0001$; CR, calorie restriction; WS, weight stabilisation; Total=T0 to W12. Akk LO, *A. muciniphila* below the median (grey bars and lines); Akk HI, *A. muciniphila* at or above the median (black bars and lines).

subjects tended to have higher NARs of several nutrients (data not shown) and had a significantly higher MAR than younger subjects (figure 8B). During the WS period, older subjects experienced a greater increase in MAR (figure 8D).

When studying the change in MAR, there was no difference in diet quality between Akk LO and Akk HI at any time point (figure 8A and see online supplementary table S2). These results did not change after adjustment for total energy intake. As expected, in either categorisation (age or *A. muciniphila* abundance) MAR significantly decreased during the CR period and increased after the WS period.

DISCUSSION

We herein show in overweight and obese individuals that higher *A. muciniphila* abundance is associated with a healthier

metabolic status, particularly with higher insulin sensitivity at baseline and improvement after CR and WS, thus confirming in humans what had been observed in murine models.^{12–14} Subjects with higher *A. muciniphila* and gene richness are metabolically healthier before and after the dietary intervention, thus demonstrating an interaction between gut bacterial richness and *A. muciniphila* abundance.

Murine studies showed a positive correlation between *A. muciniphila* and health, and established causality, where induced *A. muciniphila* expansion led to improved metabolism.^{12–14} Our results show an association between *A. muciniphila* and a healthier insulin sensitivity profile, and indicate that higher *A. muciniphila* abundance is linked to better outcomes after weight loss through CR. Importantly, *A. muciniphila* abundance in the Akk HI group remained approximately 100 times higher

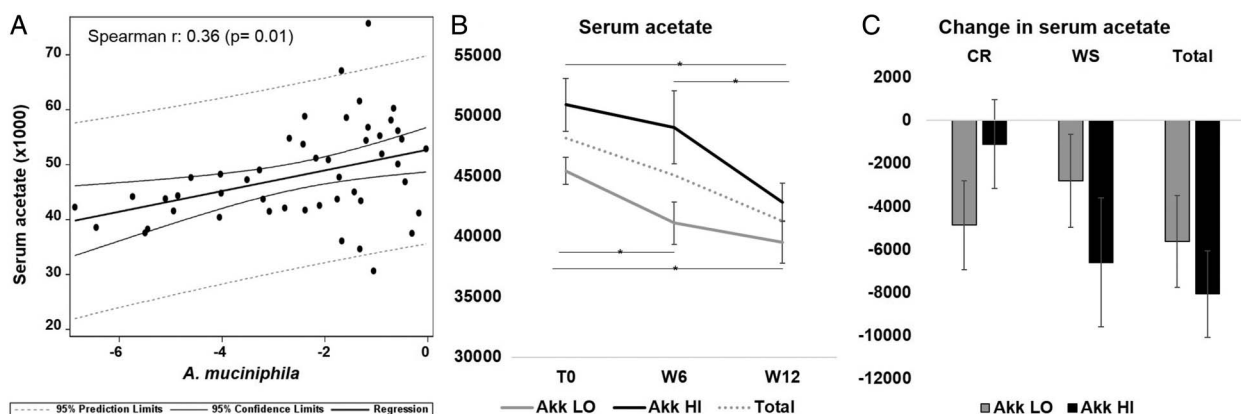


Figure 5 Serum acetate and *Akkermansia muciniphila*. (A) Spearman correlation between serum acetate and *A. muciniphila* abundance. (B) Within-group change in serum acetate assessed by paired t test, mean (SE) shown, * $p \leq 0.05$. (C) Comparison of change in serum acetate between Akk groups, mean (SE) shown; *t* test. Akk LO, *A. muciniphila* below the median; Akk HI, *A. muciniphila* at or above the median; CR, calorie restriction; WS, weight stabilisation.

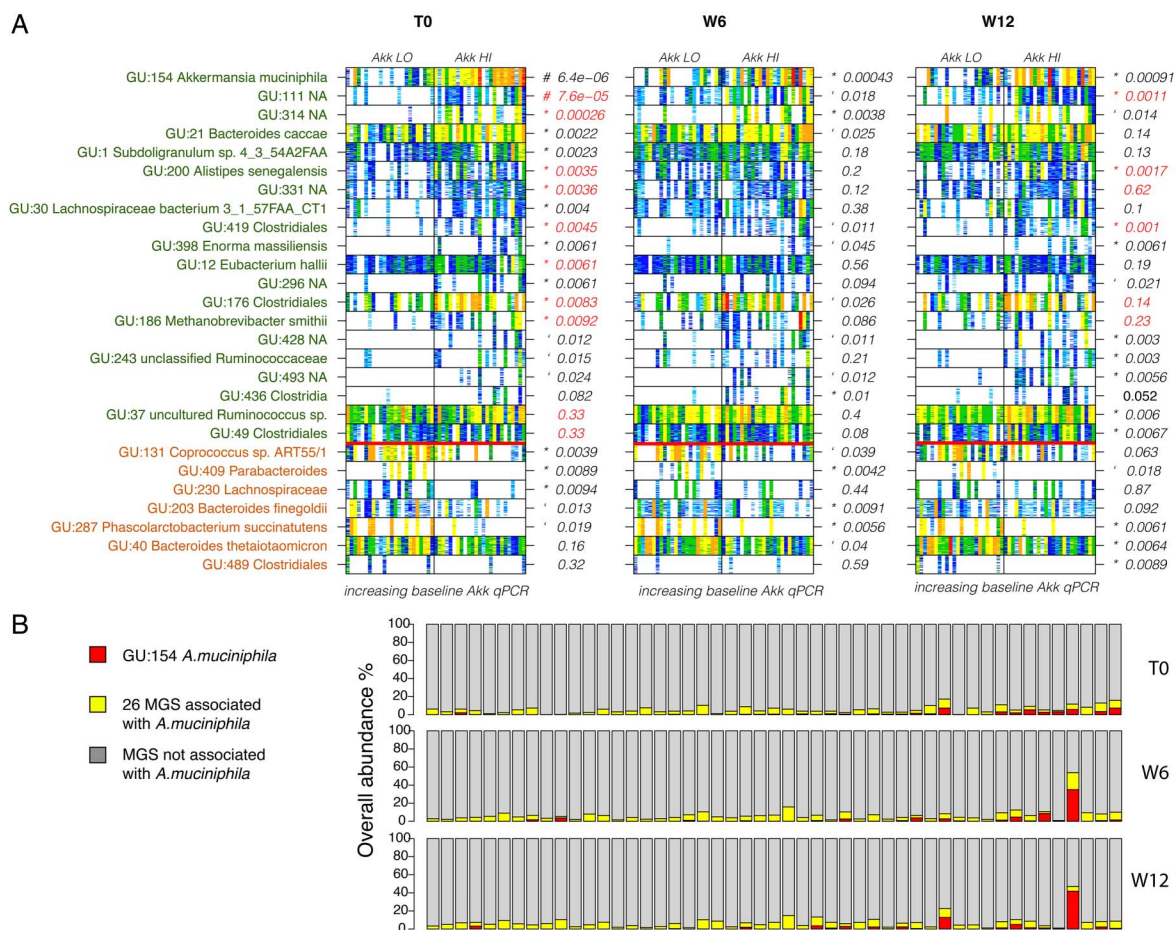


Figure 6 Association between *Akkermansia muciniphila* and metagenomic species. (A) Barcodes indicating the presence and abundance of the metagenomic species (MGS) that are significantly abundant between Akk LO and Akk HI (Wilcoxon $p < 0.01$) in a given time point. White is absent and abundance increases from light blue to dark red. Samples are sorted by *A. muciniphila* baseline abundance. Green text indicates MGS that are more abundant in the Akk HI group at baseline and in brown in the Akk LO group. p Values in red indicate MGS that are correlated with gene richness; # significant q-value; * $p < 0.05$; * $p < 0.01$. (B) Cumulative abundance load of the *A. muciniphila* MGS (red) and the 26 associated MGS (yellow) compared with the rest of the MGS (with more than 500 genes) in grey.

than in the Akk LO group throughout the intervention even if there was an intriguing reduction in the Akk HI group (figure 3). We suggest that there may be a range of *A. muciniphila* abundance associated with a healthier metabolic status and better outcomes after CR.

Adipocyte hypertrophy is associated with chronic proinflammatory cytokine secretion⁴⁹ and greater risk for insulin resistance.³⁶ Adipocyte diameter, glucose and surrogates of insulin sensitivity appear tightly linked with *A. muciniphila* in the Bayesian network (figure 1B). Primary defects in glucose homeostasis were observed at fasting and during early OGTT time points, which reflect more hepatic insulin sensitivity, rather than peripheral glucose disposal.^{50 51} Therefore, our results suggest that the glucose homeostatic defect in Akk LO individuals is primarily hepatic. In line with this, hepatic biology was solely impaired in Akk LO patients (table 1). Clamp studies are needed to validate this hypothesis more precisely.

A. muciniphila produces a variety of fermentation products, including SCFA, through mucin degradation. These substrates may serve as energy sources for other bacteria and the host.⁴⁶ It is possible that through this cross-feeding¹⁸ *A. muciniphila* may contribute to the expansion of other beneficial species, while it may itself have a direct effect on host metabolism, consistent with rodent studies.¹² Serum SCFA analysis showed an association between *A. muciniphila* abundance and acetate at

baseline. Acetate plays a role in prevention of weight gain through an anorectic effect, inflammation, metabolic dysregulation, and it is the most predominant gut-produced SCFA in peripheral blood.^{52 53} However, it is unclear to what extent *A. muciniphila* contributes to circulating acetate. Indeed, while there is a strong correlation between *A. muciniphila* abundance and serum acetate concentration at baseline, this was not maintained throughout the dietary intervention.

Our results shed new light on the relationship between *A. muciniphila*, the gut ecosystem and host health. The healthiest metabolic status was seen in subjects with higher *A. muciniphila* abundance in the context of greater bacterial gene richness in this French population. *A. muciniphila* was also found more abundant in HGC individuals in a Danish population.²² Furthermore, we show that *A. muciniphila* was associated with 26 MGS, which represent up to 20% of the microbiome. One of these MGS is *Methanobrevibacter smithii*, believed to be a producer of mucin-like glycans, as proposed by Samuel *et al.*⁵⁴ Interestingly, an association between *A. muciniphila* and mucin-degrader Ruminococcaceae was also observed. The latter was increased in abundance when nonobese diabetic (NOD) mice, a model for type-1 diabetes, were fed a diabetes-protective diet.⁵⁵

In a study where germ-free mice with or without *A. muciniphila* gavage were infected with *Salmonella typhimurium*, the presence of *A. muciniphila* exacerbated the infection,⁵⁶ which suggested

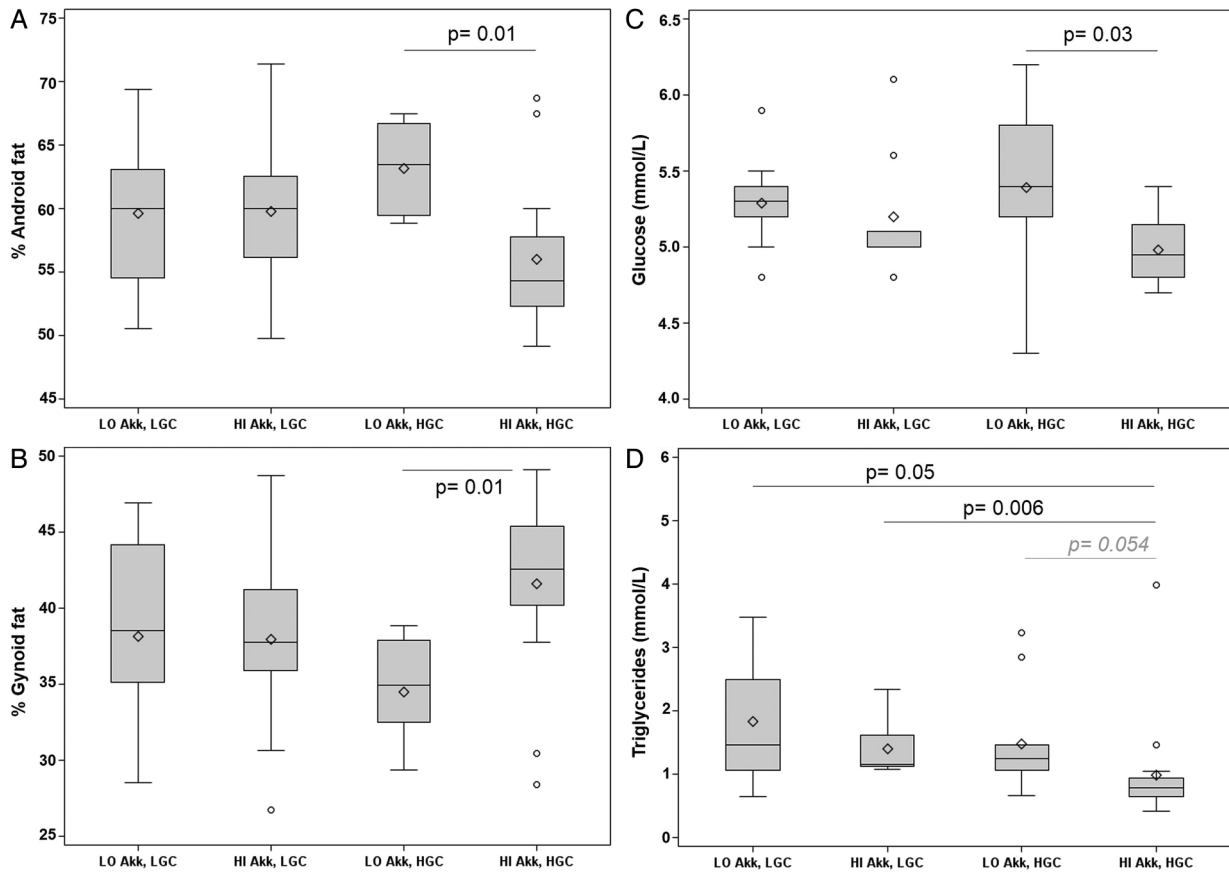
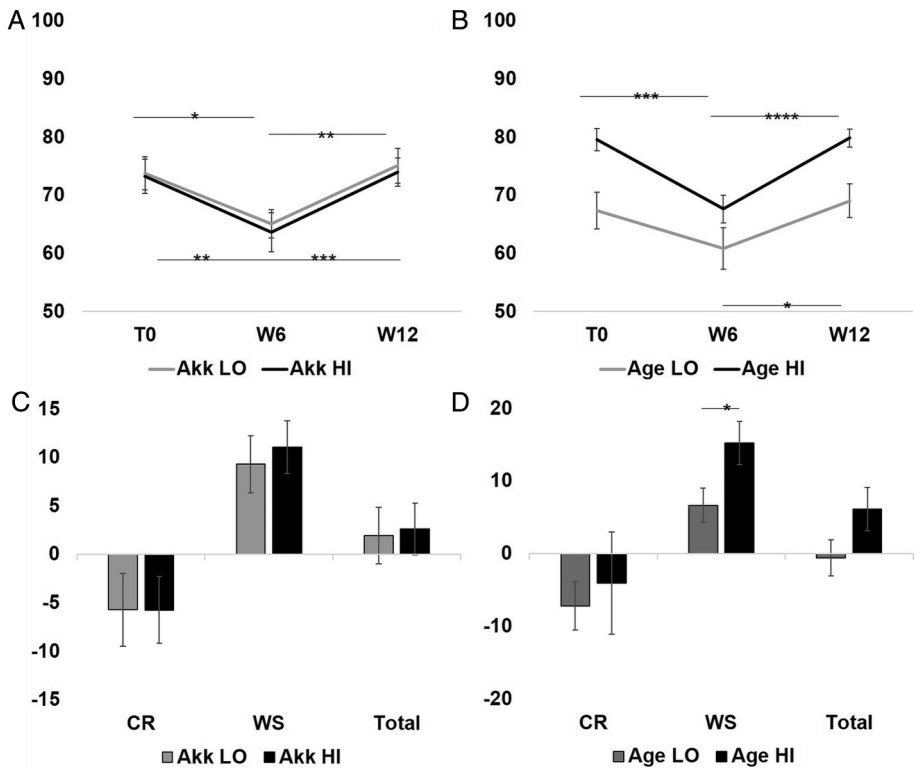


Figure 7 Clinical parameters that differ across *Akkermansia muciniphila* and gene richness groups. *A. muciniphila* x gene count groups were compared: (A) % android fat; (B) % gynoid fat; (C) fasting plasma glucose; and (D) fasting plasma triglycerides. Akk LO, *A. muciniphila* below the median; Akk HI, *A. muciniphila* at or above the median; HGC, high gene count; LGC, low gene count. Kruskal-Wallis followed by Wilcoxon rank sum test for individual comparisons with Bonferroni adjustment. Sample sizes are Akk LO, LGC N=9; Akk HI, LGC N=9; Akk LO, HGC N=11; Akk HI, HGC N=16 (p=0.56, Fisher’s exact test).

Figure 8 Change in mean adequacy ratio (MAR) diet quality score by *Akkermansia muciniphila* abundance and age over the different stages of the dietary intervention. (A and B) Paired t test was used to measure the within-group change in MAR. (C) ANCOVA adjusting for age, sex and baseline MAR value was used to compare the change between Akk categories. (D) ANCOVA adjusting for sex and baseline MAR value was used to compare the change between age categories. In A–B mean (SE), and in C–D adjusted mean change (SE) is shown. *p<0.05; **p<0.01; ***p<0.001; ****p<0.0001. CR, calorie restriction; WS, weight stabilisation. Akk LO, *A. muciniphila* below the median, N=15; Akk HI, *A. muciniphila* at or above the median, N=21. Age LO, Age below population median, N=18; Age HI, Age at or above the population median, N=18.



that the effect of an unregulated growth of *A. muciniphila* without competition from other species led to a deleterious modification of the gut environment and thinning of the mucosal layer, enabling the infection. Conversely, a recent study shows *in vitro* that *A. muciniphila* may adhere to the intestinal epithelial cells, thereby strengthening the monolayer integrity.⁵⁷

Dietary patterns influence gut microbiota diversity, yet little is known about the effect of diet on *A. muciniphila*.^{18 58} Consumption of various types of dietary fibre has yielded different results: an increase of *A. muciniphila* with a FODMAP (oligo-fructose^{12 59} and fermentable oligosaccharides, disaccharides, monosaccharides and polyols) diet,⁶⁰ but a decrease with pectin or guar gum when compared with mice fed a fibre-free diet.⁶¹ We did not observe significant differences in baseline nutrient intake between Akk groups. Even though subjects increased consumption of fibre (particularly inulin-type fructans) during CR, this study design prevents us from reaching conclusions regarding *A. muciniphila* and diet. We can conclude, however, that the Akk HI group experienced greater metabolic improvement than the Akk LO group, while there was no difference between the groups in weight loss, or MAR scores. However, since MAR does not include saturated fats, sodium, or simple sugars intake it is not a complete diet quality indicator. Studies specifically designed to assess the effect of diet, particularly fibre intake, on *A. muciniphila* abundance in a population homogenous in age and health status are warranted.

Given the mostly glucose tolerant phenotype in this population constitutes a limitation of this study. Further investigation should focus on more diverse populations ranging from lean healthy to glucose intolerance or insulin resistance to overt T2D. Even though we have shown that higher baseline *A. muciniphila* abundance is associated with better clinical outcomes after CR, and literature suggests an increased abundance of *A. muciniphila* after gastric bypass,^{23–26} a direct comparison between the effect of energy restriction versus bariatric surgery should also be implemented to establish a link between energy restriction, nutrient malabsorption, *A. muciniphila* modifications and improved glucose metabolism.

From the present study we cannot conclude whether faecal bacterial abundance is directly proportional to abundance in the gut. Microbiota in the mucus layer differs from that of the intestinal lumen,⁶² and *A. muciniphila* is closely associated to the gut mucosal layer. The observed differences in abundance of *A. muciniphila* into faeces may be due to actual changes in bacterial numbers, or alterations of the mucosal layer and gut architecture. Host genetics may also play a role in how dietary interventions influence gut microbiota and metabolic health, as previously shown in mice, where different strains had notably different gut microbial composition and intestinal environment that correlated with a variety of cardiometabolic profiles.⁶³ The host's innate and adaptive immune system may also influence the composition of gut microbiota.⁶⁴ A recent study showed greater prevalence of *A. muciniphila* in the absence of pressure from the adaptive immune system in Rag1(–/–) immunodeficient mice.⁶⁵ Furthermore, while dietary interventions have been proven to greatly impact gut microbiota characteristics,^{19 20} the stability of gut microbiota modifications after a dietary intervention needs to be assessed to verify whether gut microbiota changes are related to the maintenance of metabolic benefits over time. In conclusion, we demonstrated a significant association between *A. muciniphila* abundance and metabolic health and we provide a first view of *A. muciniphila* association with the gut ecosystem. Collectively, these observations demonstrate the importance of studying *A. muciniphila* in the context of the gut environment, as it may

drive a favourable or deleterious contribution of *A. muciniphila* to health. The underlying mechanisms explaining these associations should be investigated in future studies.

Author affiliations

¹Institute of Cardiometabolism and Nutrition, ICAN, Assistance Publique Hôpitaux de Paris, Pitié-Salpêtrière hospital, Paris, France

²INSERM, UMR S U1166, Nutriomics Team, Paris, France

³Sorbonne Universités, UPMC University Paris 06, UMR_S 1166 I, Nutriomics Team, Paris, France

⁴Université Catholique de Louvain, Metabolism and Nutrition Research Group, Louvain Drug Research Institute, WELBIO (Wallon Excellence in Life Sciences and BioTechnology), Brussels, Belgium

⁵INRA, US1367 MetaGenoPolis, Jouy-en-Josas, France

⁶AgroParisTech, UMR1319 MICALIS, Jouy-en-Josas, France

⁷Imperial College London, Section of Biomolecular Medicine, Division of Computational and Systems Medicine, Department of Surgery and Cancer, Faculty of Medicine, London, UK

Twitter Follow ICAN at @ICAN_Institute, Edi Prifti at @ediprisci and Lesley Hoyles at @BugsInYourGuts

Acknowledgements The authors thank Sophie Gougis who contributed to the dietary counselling, Soraya Fellahi (Department of Biochemistry and Hormonology, Tenon hospital) for analyses of inflammatory markers, Dominique Bonnefont-Rousselot and Randa Bittar (Department of Metabolic Biochemistry, Pitié-Salpêtrière hospital) for help with the analysis of plasma lipid profile.

Collaborators MICRO-Obes Consortium list of contributors: Sylvie Le Mouhaër; Aurélie Cottillard; Sean P. Kennedy; Nicolas Pons; Emmanuelle Le Chatelier; Mathieu Almeida; Benoit Quinquis; Nathalie Galleron; Jean-Michel Batto; Pierre Renault; Jean-Daniel Zucker; Stanislav Dusko Ehrlich; Hervé Blottière; Marion Leclerc; Catherine Juste; Tomas de Wouters; Patricia Lepage.

Contributors KC and SWR designed the overall clinical research study and managed it; PDC and AE generated the *A. muciniphila* qPCR results; JD and FL generated the quantitative metagenomics results and EP analysed association between *A. muciniphila* and MGS; EOJ was involved in analysis and interpretation of dietary data; BDJ and JA-W were involved in analysis and interpretation of clinical results; MCD managed this project and implemented data integration and statistical analysis; NS created the Bayesian Network and contributed to statistical analysis; M-ED, JC and LH generated NMR acetate results; MCD, JA-W, EP, EOJ, BDJ and KC wrote the manuscript. All authors provided input on the analysis and interpretation of the results, and preparation of the manuscript.

Funding This work was supported by Agence Nationale de la Recherche (ANR MICRO-Obes), KOT-Ceprodi and the association Fondation Coeur et Arteres (clinical investigation) as well as European Union's Seventh Framework Program under grant agreement MetaHIT HEALTH-F4-2012-305312, and grant agreement HEALTH-F4-2012-305312 (METACARDIS). PDC is a research associate at FRS-FNRS (Fonds de la Recherche Scientifique), Belgium. AE is a postdoctoral researcher at FRS-FNRS, Belgium. PDC is the recipient of grants from FRS-FNRS (convention J.0084.15, convention 3.4579.11) and PDR (Projet de Recherche, convention: T.0138.14) and ERC Starting Grant 2013 (European Research Council, Starting grant 336452-ENIGMO). This work was supported by the Fonds de la Recherche Scientifique—FNRS for the FRFS-WELBIO under Grant n° WELBIO-CR-20125-02R.

Competing interests None declared.

Patient Consent Obtained.

Ethics approval Ethical Committee (CPP N°1 Hôtel Dieu Hospital).

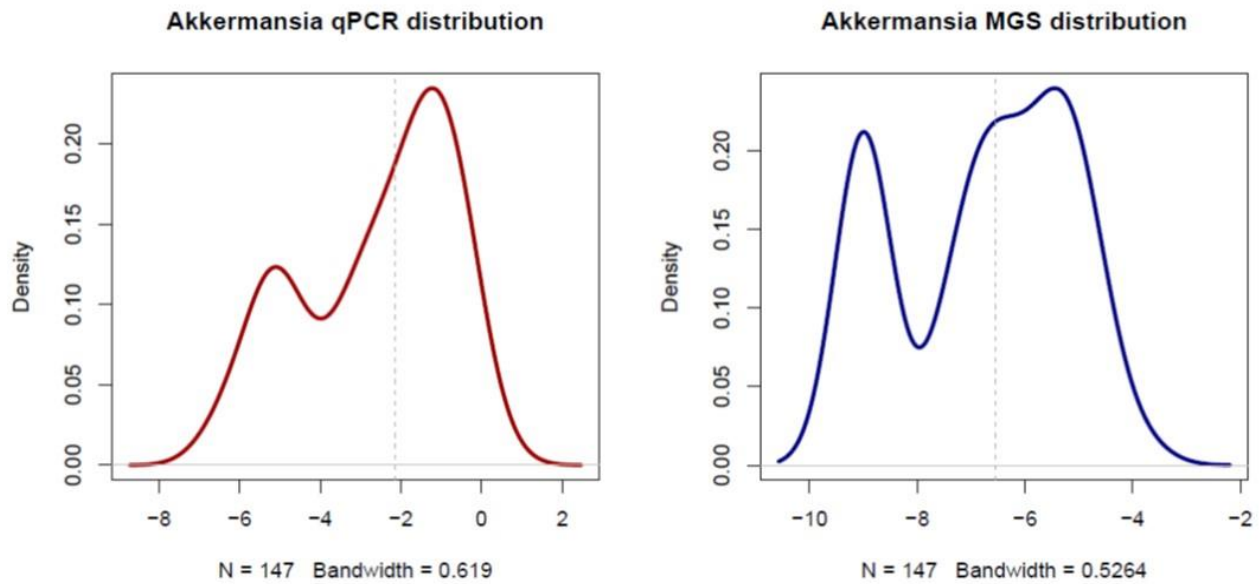
Provenance and peer review Not commissioned; externally peer reviewed.

REFERENCES

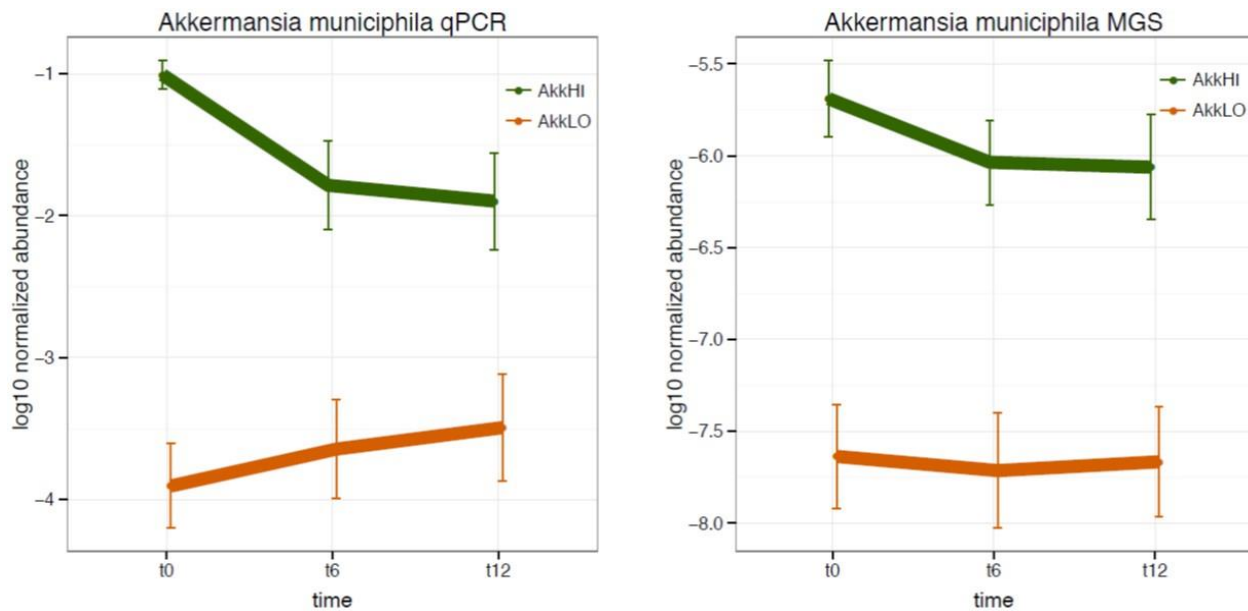
- 1 Tremaroli V, Bäckhed F. Functional interactions between the gut microbiota and host metabolism. *Nature* 2012;489:242–9.
- 2 Delzenne NM, Cani PD. Interaction between obesity and the gut microbiota: relevance in nutrition. *Annu Rev Nutr* 2011;31:15–31.
- 3 Cani PD. Metabolism in 2013: the gut microbiota manages host metabolism. *Nat Rev Endocrinol* 2014;10:74–6.
- 4 Ley RE, Bäckhed F, Turnbaugh P, et al. Obesity alters gut microbial ecology. *Proc Natl Acad Sci USA* 2005;102:11070–5.
- 5 Ridaura VK, Faith JJ, Rey FE, et al. Gut microbiota from twins discordant for obesity modulate metabolism in mice. *Science* 2013;341:1241214.
- 6 Turnbaugh PJ, Ley RE, Mahowald MA, et al. An obesity-associated gut microbiome with increased capacity for energy harvest. *Nature* 2006;444:1027–31.
- 7 Vrieze A, Van Nood E, Holleman F, et al. Transfer of intestinal microbiota from lean donors increases insulin sensitivity in individuals with metabolic syndrome. *Gastroenterology* 2012;143:913–16.e7.

- 8 Png CW, Lindén SK, Gilshenan KS, *et al.* Mucolytic bacteria with increased prevalence in IBD mucosa augment in vitro utilization of mucin by other bacteria. *Am J Gastroenterol* 2010;105:2420–8.
- 9 Vignsnes LK, Brynkvog J, Steenholdt C, *et al.* Gram-negative bacteria account for main differences between faecal microbiota from patients with ulcerative colitis and healthy controls. *Benef Microbes* 2012;3:287–97.
- 10 Swidsinski A, Dörffel Y, Loening-Baucke V, *et al.* Acute appendicitis is characterised by local invasion with *Fusobacterium nucleatum/necrophorum*. *Gut* 2011;60:34–40.
- 11 Joyce SA, Gahan CGM. The gut microbiota and the metabolic health of the host. *Curr Opin Gastroenterol* 2014;30:120–7.
- 12 Everard A, Belzer C, Geurts L, *et al.* Cross-talk between *Akkermansia muciniphila* and intestinal epithelium controls diet-induced obesity. *Proc Natl Acad Sci USA* 2013;110:9066–71.
- 13 Shin N-R, Lee J-C, Lee H-Y, *et al.* An increase in the *Akkermansia* spp. population induced by metformin treatment improves glucose homeostasis in diet-induced obese mice. *Gut* 2014;63:727–35.
- 14 Anhê FF, Roy D, Pilon G, *et al.* A polyphenol-rich cranberry extract protects from diet-induced obesity, insulin resistance and intestinal inflammation in association with increased *Akkermansia* spp. population in the gut microbiota of mice. *Gut* 2014;64:872–83.
- 15 Zhang X, Shen D, Fang Z, *et al.* Human gut microbiota changes reveal the progression of glucose intolerance. *PLoS ONE* 2013;8:e71108.
- 16 Qin J, Li Y, Cai Z, *et al.* A metagenome-wide association study of gut microbiota in type 2 diabetes. *Nature* 2012;490:55–60.
- 17 Karlsson FH, Tremaroli V, Nookaew I, *et al.* Gut metagenome in European women with normal, impaired and diabetic glucose control. *Nature* 2013;498:99–103.
- 18 Khan MT, Nieuwdorp M, Bäckhed F. Microbial modulation of insulin sensitivity. *Cell Metab* 2014;20:753–60.
- 19 Aron-Wisniewsky J, Dore J, Clement K. The importance of the gut microbiota after bariatric surgery. *Nat Rev Gastroenterol Hepatol* 2012;9:590+.
- 20 Clarke SF, Murphy EF, Nilaweera K, *et al.* The gut microbiota and its relationship to diet and obesity: new insights. *Gut Microbes* 2012;3:186–202.
- 21 Cotillard A, Kennedy SP, Kong LC, *et al.* Dietary intervention impact on gut microbial gene richness. *Nature* 2013;500:585–8.
- 22 Le Chatelier E, Nielsen T, Qin J, *et al.* Richness of human gut microbiome correlates with metabolic markers. *Nature* 2013;500:541–6.
- 23 Zhang H, DiBaise JK, Zuccolo A, *et al.* Human gut microbiota in obesity and after gastric bypass. *Proc Natl Acad Sci USA* 2009;106:2365–70.
- 24 Liou AP, Paziuk M, Luevano J-M, *et al.* Conserved shifts in the gut microbiota due to gastric bypass reduce host weight and adiposity. *Sci Transl Med* 2013;5:178ra41.
- 25 Aron-Wisniewsky J, Clement K. The effects of gastrointestinal surgery on gut microbiota: potential contribution to improved insulin sensitivity. *Curr Atheroscler Rep* 2014;16:1–11.
- 26 Graessler J, Qin Y, Zhong H, *et al.* Metagenomic sequencing of the human gut microbiome before and after bariatric surgery in obese patients with type 2 diabetes: correlation with inflammatory and metabolic parameters. *Pharmacogenomics J* 2013;13:514–22.
- 27 Kong LC, Wuillemin P-H, Bastard J-P, *et al.* Insulin resistance and inflammation predict kinetic body weight changes in response to dietary weight loss and maintenance in overweight and obese subjects by using a Bayesian network approach. *Am J Clin Nutr* 2013;98:1385–94.
- 28 Ciangura C, Bouillot J-L, Lloret-Linares C, *et al.* Dynamics of change in total and regional body composition after gastric bypass in obese patients. *Obes Silver Spring Md* 2010;18:760–5.
- 29 Dalmas E, Rouault C, Abdennour M, *et al.* Variations in circulating inflammatory factors are related to changes in calorie and carbohydrate intakes early in the course of surgery-induced weight reduction. *Am J Clin Nutr* 2011;94:450–8.
- 30 Cani PD, Amar J, Iglesias MA, *et al.* Metabolic endotoxemia initiates obesity and insulin resistance. *Diabetes* 2007;56:1761–72.
- 31 Levy JC, Matthews DR, Hermans MP. Correct homeostasis model assessment (HOMA) evaluation uses the computer program. *Diabetes Care* 1998;21:2191–2.
- 32 Disse E, Bastard JP, Bonnet F, *et al.* A lipid-parameter-based index for estimating insulin sensitivity and identifying insulin resistance in a healthy population. *Diabetes Metab* 2008;34:457–63.
- 33 Mutch DM, Tordjman J, Pelloux V, *et al.* Needle and surgical biopsy techniques differentially affect adipose tissue gene expression profiles. *Am J Clin Nutr* 2009;89:51–7.
- 34 Rizkalla SW, Prifti E, Cotillard A, *et al.* Differential effects of macronutrient content in 2 energy-restricted diets on cardiovascular risk factors and adipose tissue cell size in moderately obese individuals: a randomized controlled trial. *Am J Clin Nutr* 2012;95:49–63.
- 35 Spalding KL, Arner E, Westermark PO, *et al.* Dynamics of fat cell turnover in humans. *Nature* 2008;453:783–7.
- 36 Cotillard A, Poitou C, Torcivia A, *et al.* Adipocyte size threshold matters: link with risk of type 2 diabetes and improved insulin-resistance after gastric bypass. *J Clin Endocrinol Metab* 2014;99:E1466–70.
- 37 Hirsch J, Gallian E. Methods for the determination of adipose cell size in man and animals. *J Lipid Res* 1968;9:110–19.
- 38 Aron-Wisniewsky J, Tordjman J, Poitou C, *et al.* Human adipose tissue macrophages: m1 and m2 cell surface markers in subcutaneous and omental depots and after weight loss. *J Clin Endocrinol Metab* 2009;94:4619–23.
- 39 Dona AC, Jiménez B, Schäfer H, *et al.* Precision high-throughput proton NMR spectroscopy of human urine, serum, and plasma for large-scale metabolic phenotyping. *Anal Chem* 2014;86:9887–94.
- 40 Blaise BJ, Shintu L, Elena B, *et al.* Statistical recoupling prior to significance testing in nuclear magnetic resonance based metabolomics. *Anal Chem* 2009;81:6242–51.
- 41 Nielsen HB, Almeida M, Juncker AS, *et al.* Identification and assembly of genomes and genetic elements in complex metagenomic samples without using reference genomes. *Nat Biotechnol* 2014;32:822–8.
- 42 Steyn NP, Nel JH, Nantel G, *et al.* Food variety and dietary diversity scores in children: are they good indicators of dietary adequacy? *Public Health Nutr* 2006;9:644–50.
- 43 Vieux F, Soler L-G, Touazi D, *et al.* High nutritional quality is not associated with low greenhouse gas emissions in self-selected diets of French adults. *Am J Clin Nutr* 2013;97:569–83.
- 44 Martin A. The “apports nutritionnels conseillés (ANC)” for the French population. *Reprod Nutr Dev* 2001;41:119–28.
- 45 Scutari M. Learning Bayesian Networks with the bnlearn R Package. *J Stat Softw* 2010;35:1–22.
- 46 Lukovac S, Belzer C, Pellis L, *et al.* Differential modulation by *Akkermansia muciniphila* and *Faecalibacterium prausnitzii* of host peripheral lipid metabolism and histone acetylation in mouse gut organoids. *MBio* 2014;5:e01438–14.
- 47 Van Passel MWJ, Kant R, Zoetendal EG, *et al.* The Genome of *Akkermansia muciniphila*, a dedicated intestinal mucin degrader, and its use in exploring intestinal metagenomes. *PLoS ONE* 2011;6:e16876.
- 48 Kong LC, Holmes BA, Cotillard A, *et al.* Dietary patterns differently associate with inflammation and gut microbiota in overweight and obese subjects. *PLoS ONE*; 2014;9:e109434.
- 49 Skurk T, Alberti-Huber C, Herder C, *et al.* Relationship between adipocyte size and adipokine expression and secretion. *J Clin Endocrinol Metab* 2007;92:1023–33.
- 50 Abdul-Ghani MA, Matsuda M, Balas B, *et al.* Muscle and liver insulin resistance indexes derived from the oral glucose tolerance test. *Diabetes Care* 2007;30:89–94.
- 51 Abdul-Ghani MA, Lysenko V, Tuomi T, *et al.* Fasting versus postload plasma glucose concentration and the risk for future type 2 diabetes. *Diabetes Care* 2009;32:281–6.
- 52 Russell WR, Hoyles L, Flint HJ, *et al.* Colonic bacterial metabolites and human health. *Curr Opin Microbiol* 2013;16:246–54.
- 53 Frost G, Sleeth ML, Sahuri-Arisoylu M, *et al.* The short-chain fatty acid acetate reduces appetite via a central homeostatic mechanism. *Nat Commun* 2014;5:3611.
- 54 Samuel BS, Hansen EE, Manchester JK, *et al.* Genomic and metabolic adaptations of *Methanobrevibacter smithii* to the human gut. *Proc Natl Acad Sci USA* 2007;104:10643–8.
- 55 Toivonen RK, Emani R, Munukka E, *et al.* Fermentable fibres condition colon microbiota and promote diabetogenesis in NOD mice. *Diabetologia* 2014;57:2183–92.
- 56 Ganesh BP, Klopffleisch R, Loh G, *et al.* Commensal *Akkermansia muciniphila* exacerbates gut inflammation in *Salmonella* Typhimurium-infected gnotobiotic mice. *PLoS ONE* 2013;8:e74963.
- 57 Reunanen J, Kainulainen V, Huuskonen L, *et al.* *Akkermansia muciniphila* adheres to enterocytes and strengthens the integrity of epithelial cell layer. *Appl Environ Microbiol* 2015;81:3655–62.
- 58 Turnbaugh PJ, Ridaura VK, Faith JJ, *et al.* The effect of diet on the human gut microbiome: a metagenomic analysis in humanized gnotobiotic mice. *Sci Transl Med* 2009;1:6ra14.
- 59 Everard A, Lazarevic V, Derrien M, *et al.* Responses of gut microbiota and glucose and lipid metabolism to prebiotics in genetic obese and diet-induced leptin-resistant mice. *Diabetes* 2011;60:2775–86.
- 60 Halmos EP, Christophersen CT, Bird AR, *et al.* Diets that differ in their FODMAP content alter the colonic luminal microenvironment. *Gut* 2015;64:93–100.
- 61 Jakobsdottir G, Xu J, Molin G, *et al.* High-fat diet reduces the formation of butyrate, but increases succinate, inflammation, liver fat and cholesterol in rats, while dietary fibre counteracts these effects. *PLoS ONE* 2013;8:e80476.
- 62 Van den Abbeele P, Roos S, Eeckhaut V, *et al.* Incorporating a mucosal environment in a dynamic gut model results in a more representative colonization by lactobacilli. *Microb Biotechnol* 2012;5:106–15.
- 63 O'Connor A, Quizon PM, Albright JE, *et al.* Responsiveness of cardiometabolic-related microbiota to diet is influenced by host genetics. *Mamm Genome* 2014;25:583–99.
- 64 Kato LM, Kawamoto S, Maruya M, *et al.* The role of the adaptive immune system in regulation of gut microbiota. *Immunol Rev* 2014;260:67–75.
- 65 Zhang H, Sparks JB, Karyala SV, *et al.* Host adaptive immunity alters gut microbiota. *ISME J* 2015;9:770–81.

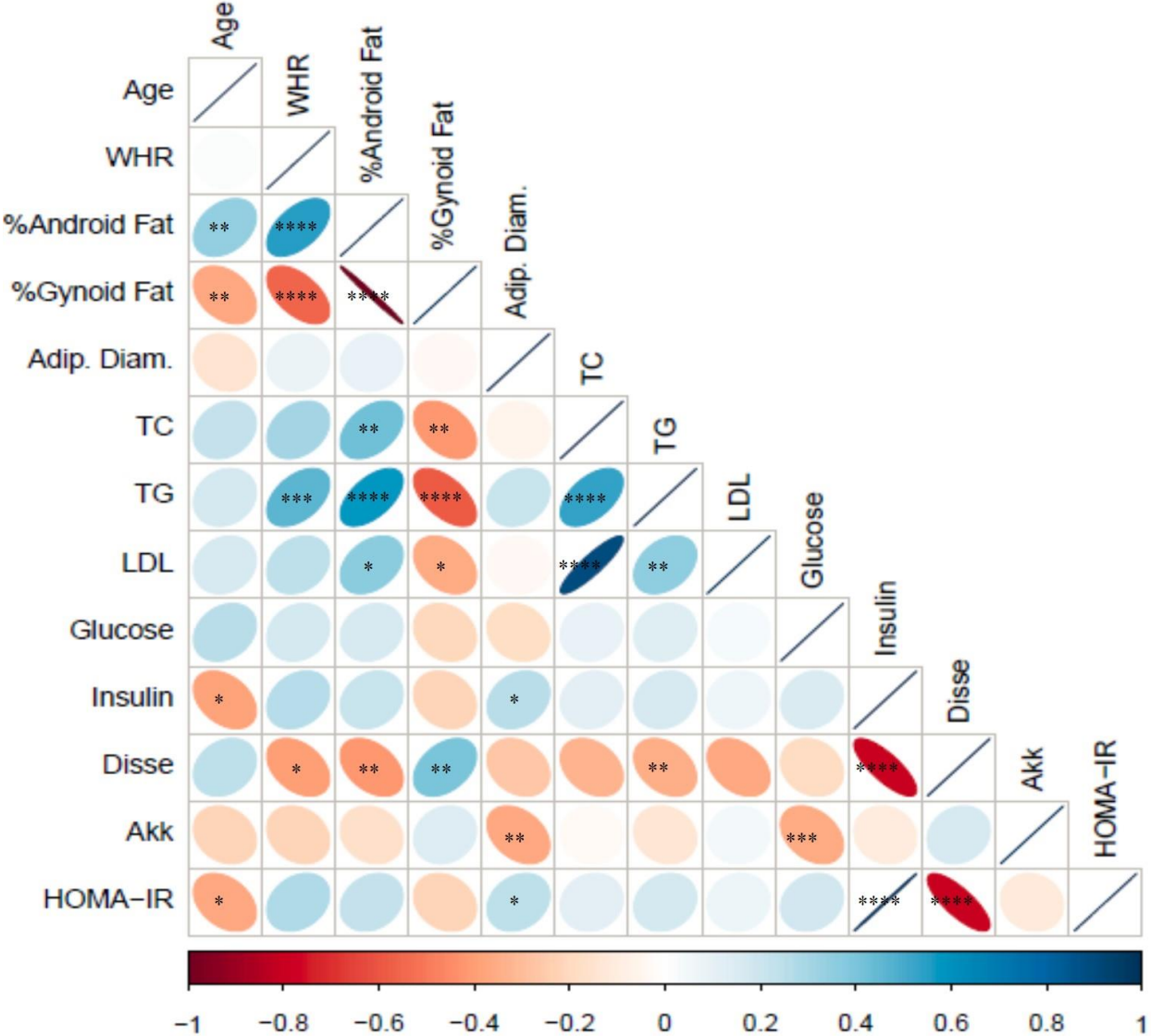
Supplementary Figure 1. *A. muciniphila* abundance distribution comparison between qPCR and QM.



Supplementary Figure 2. Comparison of changes in *A. muciniphila* abundance throughout dietary intervention between qPCR and QM.



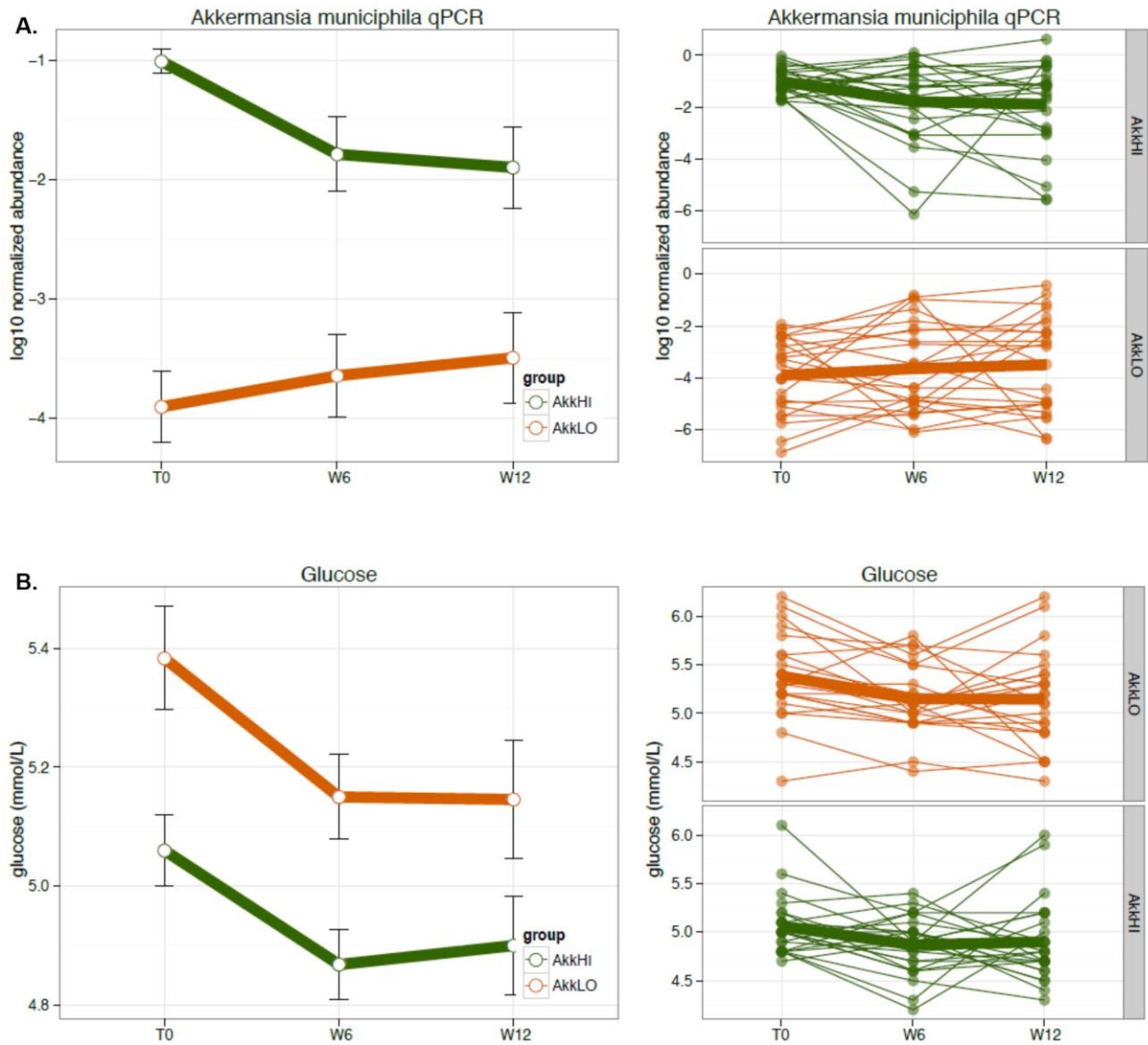
Supplementary Figure 3. Correlation matrix depicting the baseline association between relevant variables.



* $p \leq 0.05$; ** $p \leq 0.01$; *** $p \leq 0.001$; **** $p \leq 0.0001$

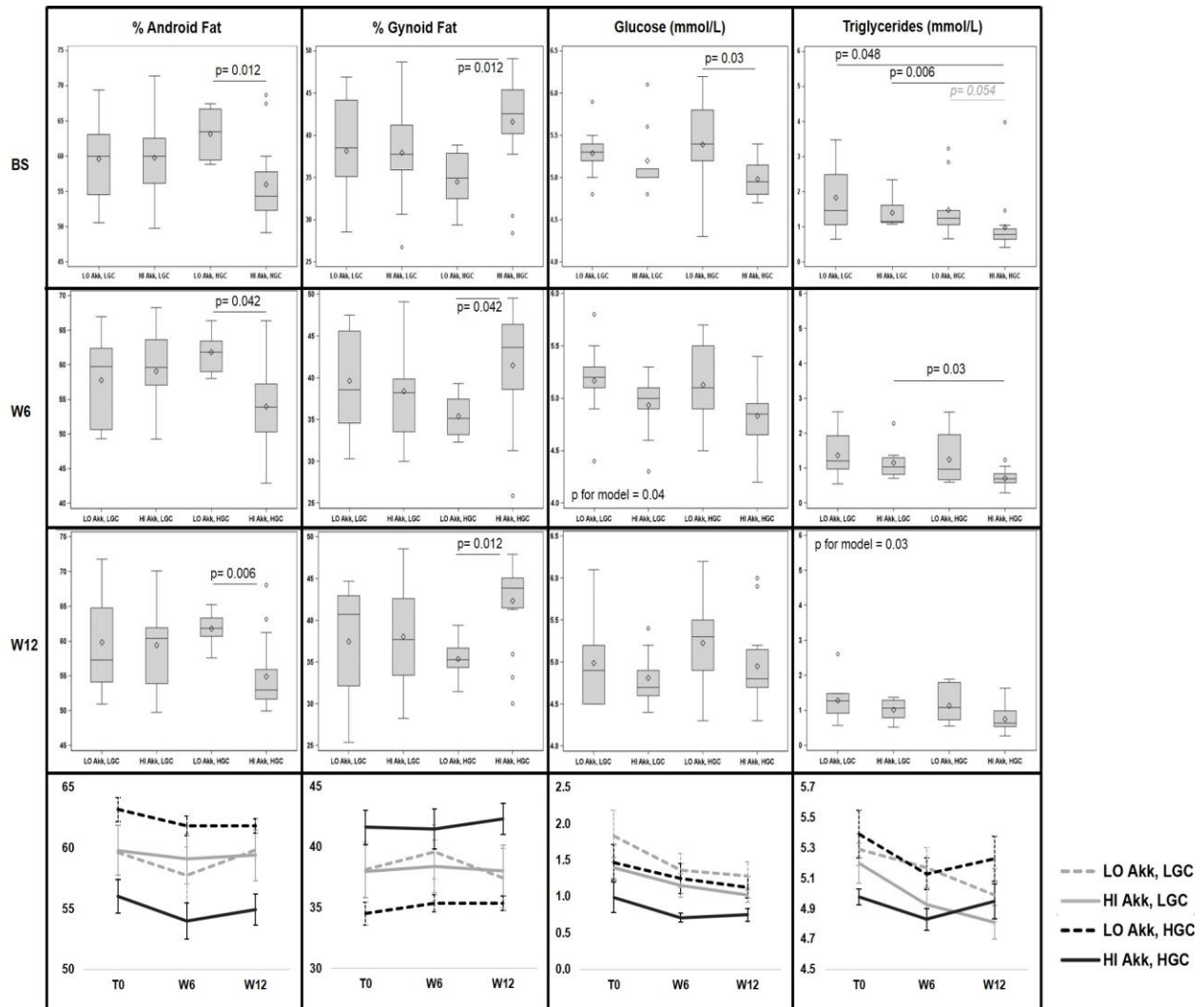
Supplementary Figure 4. Individual variations in *A. muciniphila* abundance and fasting glucose throughout the dietary intervention.

A: *A. muciniphila* individual kinetics. **B:** Fasting glucose individual kinetics.



Supplementary Figure 5. Clinical parameters that differed across *A. muciniphila* and gene count groups at different time points.

Kruskal-Wallis for trend followed by Wilcoxon Rank Sum test for individual comparisons with Bonferroni adjustment. Akk LO = *A. muciniphila* below the median; Akk HI = *A. muciniphila* at or above the median; HGC = high gene count; LGC = low gene count. Sample sizes are Akk LO, LGC N=9; Akk HI, LGC N=9; Akk LO, HGC N=11; Akk HI, HGC N=16.



Supplementary Table 1. Effect size of *A. muciniphila* abundance and gene richness on clinical parameters.

Outcome	Effect size (%)		
	Akk (LO/HI)	Gene richness (LGC/HGC)	Interaction
% Android fat	4.1%	0%	15.7%
% Gynoid fat	3.5%	0%	14.8%
Glucose	15%	0%	12.5%
Triglycerides	2.8%	4.2%	7.5%

Effect size is the adjusted R^2 from linear regression models.

Supplementary Table 2. Comparison of NARs at T0, W6 and W12 between Akk LO and HI groups.

Time Point	NAR	Akk LO (N=15)		Akk HI (N=21)		p-value
		Mean	Std Dev	Mean	Std Dev	
Baseline	Protein	100	0	97	10	24
	Fiber	64	23	52	17	8
	Vitamin A	55	32	52	25	82
	Thiamine	81	18	85	16	45
	Riboflavin	80	20	80	20	81
	Niacin	99	4	91	16	21
	Vitamin B6	87	16	79	21	26
	Folic acid	78	23	75	21	58
	Vitamin B12	95	9	93	18	45
	Vitamin C	71	27	75	28	58
	Vitamin D	27	14	43	27	11
	Vitamin E	66	26	66	22	99
	Iron	67	20	65	21	95
	Magnesium	61	17	61	13	85
	Potassium	79	17	81	18	80
Calcium	70	28	76	24	50	
Week 6	Protein	100	0	100	0	100
	Fiber	82	15	73	24	37
	Vitamin A	16	24	7	5	24
	Thiamine	61	16	58	21	75
	Riboflavin	63	17	67	24	70
	Niacin	85	18	81	20	79
Vitamin B6	73	18	72	19	91	

	Folic acid	72	17	76	25	45
	Vitamin B12	81	19	72	27	28
	Vitamin C	86	19	85	25	40
	Vitamin D	20	23	23	29	55
	Vitamin E	58	26	59	25	85
	Iron	49	15	48	25	36
	Magnesium	49	8	49	20	40
	Potassium	81	16	79	19	97
	Calcium	65	18	69	28	40
Week 12	Protein	100	1	99	3	79
	Fiber	73	17	62	26	17
	Vitamin A	43	27	35	16	61
	Thiamine	82	20	90	13	38
	Riboflavin	84	16	86	17	32
	Niacin	95	10	97	9	52
	Vitamin B6	85	21	88	15	84
	Folic acid	87	21	81	21	51
	Vitamin B12	86	24	93	13	61
	Vitamin C	86	23	81	20	39
	Vitamin D	34	30	27	16	100
	Vitamin E	59	27	57	13	50
	Iron	64	17	62	19	54
	Magnesium	61	9	62	17	97
	Potassium	89	14	82	17	31
	Calcium	75	22	82	22	32

Wilcoxon rank sum test, mean (SD) are shown. The NAR is the mean intake of a nutrient divided by the French Recommended Dietary Allowance, and truncated at 100.

GUT

Gut microbe may be key to metabolic health and leanness in overweight/obesity

Abundance of Akkermansia muciniphila linked to lower glucose, blood fats, and healthier body fat distribution

The gut microbe *Akkermansia muciniphila* may hold the key to better metabolic health and healthier body fat distribution in people who are overweight or obese, reveals a small study published online in the journal **Gut**.

The microbe seems to be linked to lower levels of fasting blood glucose and fats—key factors involved in the development of diabetes and heart disease—and healthier distribution of body fat, the findings indicate.

In healthy people *A muciniphila* makes up around 3-5% of the gut's bacterial ecosystem and is associated with a diet rich in insoluble fibre.

The evidence to date suggests that a wide range of gut microbes and the chemical processes that sustain life—metabolism—have an important role in the development of obesity and potentially harmful metabolic disorders.

A muciniphila has already been linked to healthier glucose metabolism and leanness in mice, but it has not been clear whether this also applies to people.

The researchers therefore wanted to find out if the microbe was linked to bacterial diversity in the gut and a lower health risk profile in people who were overweight/obese.

They assessed levels of gut *A muciniphila* and other bacteria, as well as fasting blood glucose and blood fats, and indicators of body fat distribution—waist:hip ratio and the amount of fat beneath the skin—in 49 obese or overweight adults.

These assessments were made before and after a dietary intervention: 6 weeks of a low calorie diet with extra protein and fibre followed by 6 weeks of a stabilisation diet. Calorie restriction is known to alter the composition of gut bacteria.

They found that at the start of the dietary intervention, those with evidence of abundant *A muciniphila* in their guts had lower fasting blood glucose and insulin levels, a smaller waist:hip ratio, and a smaller fat cell volume beneath their skin than those with low levels of the microbe.

Those who had abundant *A muciniphila* as well as a greater diversity of microbes in their gut to start with, had the healthiest metabolic profile—particularly for fasting blood glucose, triglycerides (blood fats), and body fat distribution.

After 6 weeks of calorie restriction, those with a greater abundance of *A muciniphila* to start with showed stronger improvement in their metabolic profile and body fat distribution than those with lower levels.

Calorie restriction was associated with a reduction in the abundance of *A muciniphila* across the board, but these levels still remained 100 times higher in people in whom the microbe was more abundant to start with.

The researchers suggest that the by-products of *A muciniphila* may act as a fuel for other beneficial gut bacteria.

"*A muciniphila* produces a variety of fermentation products," they write. "These may serve as energy sources for other bacteria and the host. It is possible that through this cross-feeding, *A muciniphila* may contribute to the expansion of other beneficial species, while it may itself have a direct effect on host metabolism, consistent with rodent studies," they add.

The researchers conclude that *A muciniphila* warrants further investigation to see whether it could have some potential as a treatment for insulin resistance—the precursor to type 2 diabetes—and whether it might be used as an indicator of the likely success of dietary interventions.