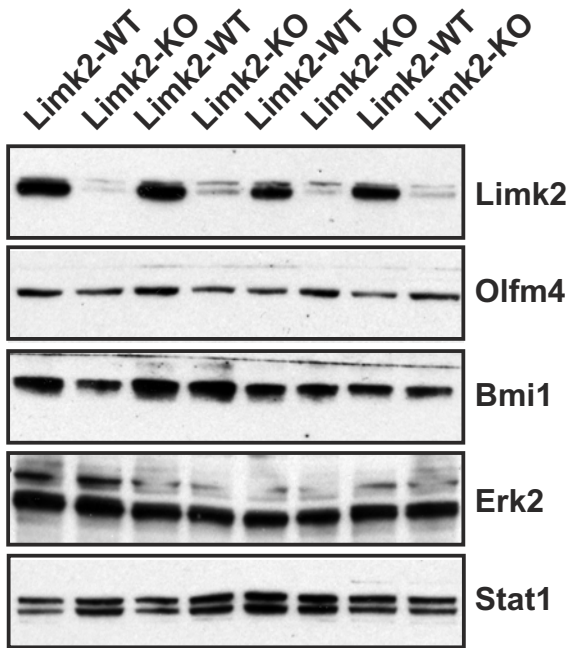


Supplementary Figure 1

A

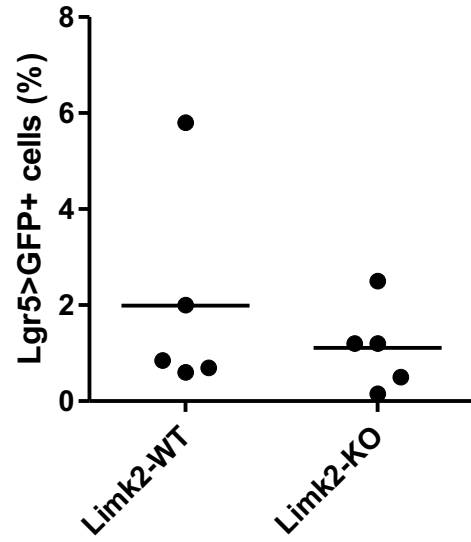


B

genes expression - Limk2-WT vs. Limk2-KO

	LogFC(Limk2-KO vs. Limk2-WT)	Adj. P value
Limk2	-2.046346798	0.000549511
Lgr5	-0.209682862	0.531359336
Olfm4	0.324662684	0.287298389
Ascl2	-0.120774132	0.778480402
Bmi1	-0.037240942	0.88326395

C



Supplemental Figure 1. *Limk2* deletion does not alter stem cell properties or number in mouse intestinal epithelia. (A) Western blotting of intestinal epithelial cell lysates from 4 independent wild-type and *Limk2* knockout mice as indicated. No consistent variation in stem cell markers Olfm4 or Bmi1 were observed. (B) Transcriptome analysis by microarray revealed no statistically significant differences in the levels of Lgr5, Olfm4, Ascl2 and Bmi1 between 4 independent wild-type and *Limk2* knockout mice. (C) Flow cytometry revealed no significant difference in the percentage of Lgr5>GFP positive cells in isolated intestinal epithelial cells from between 5 independent wild-type and *Limk2* knockout mice.

Supplemental Methods

Transcriptome Analysis of Mouse Intestinal Crypts

RNA was purified from freshly isolated crypts of 4 *Limk2*-WT and 4 *Limk2*-KO mice small intestines using the RNeasy® Mini Kit (Qiagen). High integrity/purity RNA was amplified using the Illumina® TotalPrep RNA Amplification Kit (Ambion/Applied Biosystems). 750 ng of cRNA were loaded into each inlet port of the MouseRef8 v2 Beadchip (Illumina). After following manufacturer instructions for hybridization, signal was detected using a Bead Array Reader (Illumina).